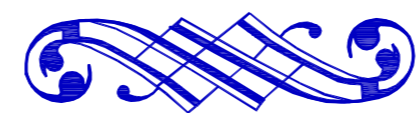




CHÂTEAU

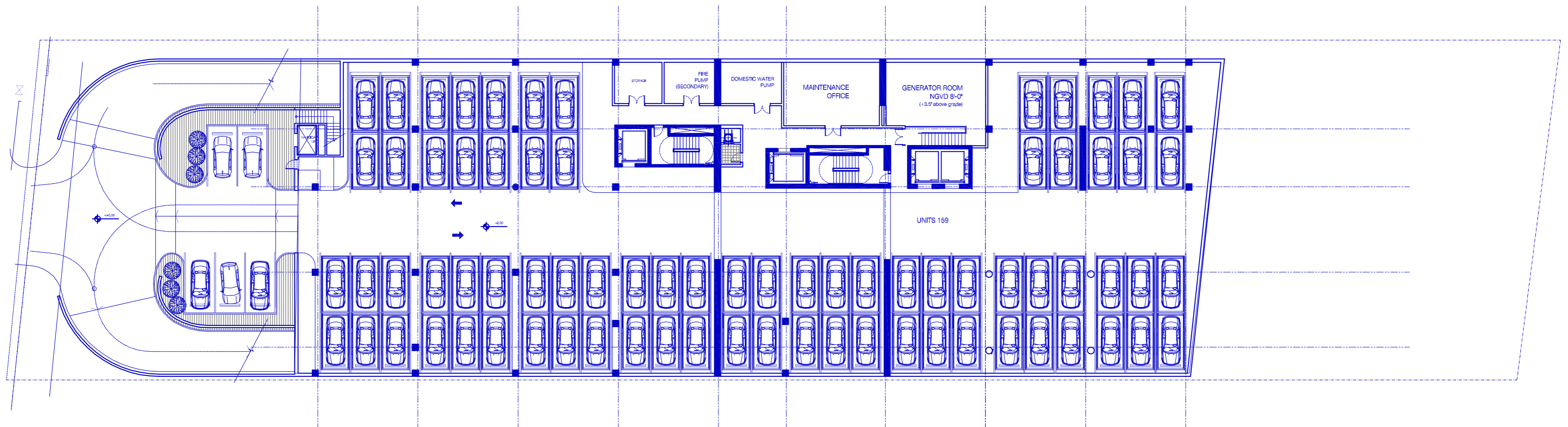
BEACH RESIDENCES

SUNNY ISLES





CHATEAU
BEACH RESIDENCES
SUNNY ISLES



BASEMENT
REV. 23

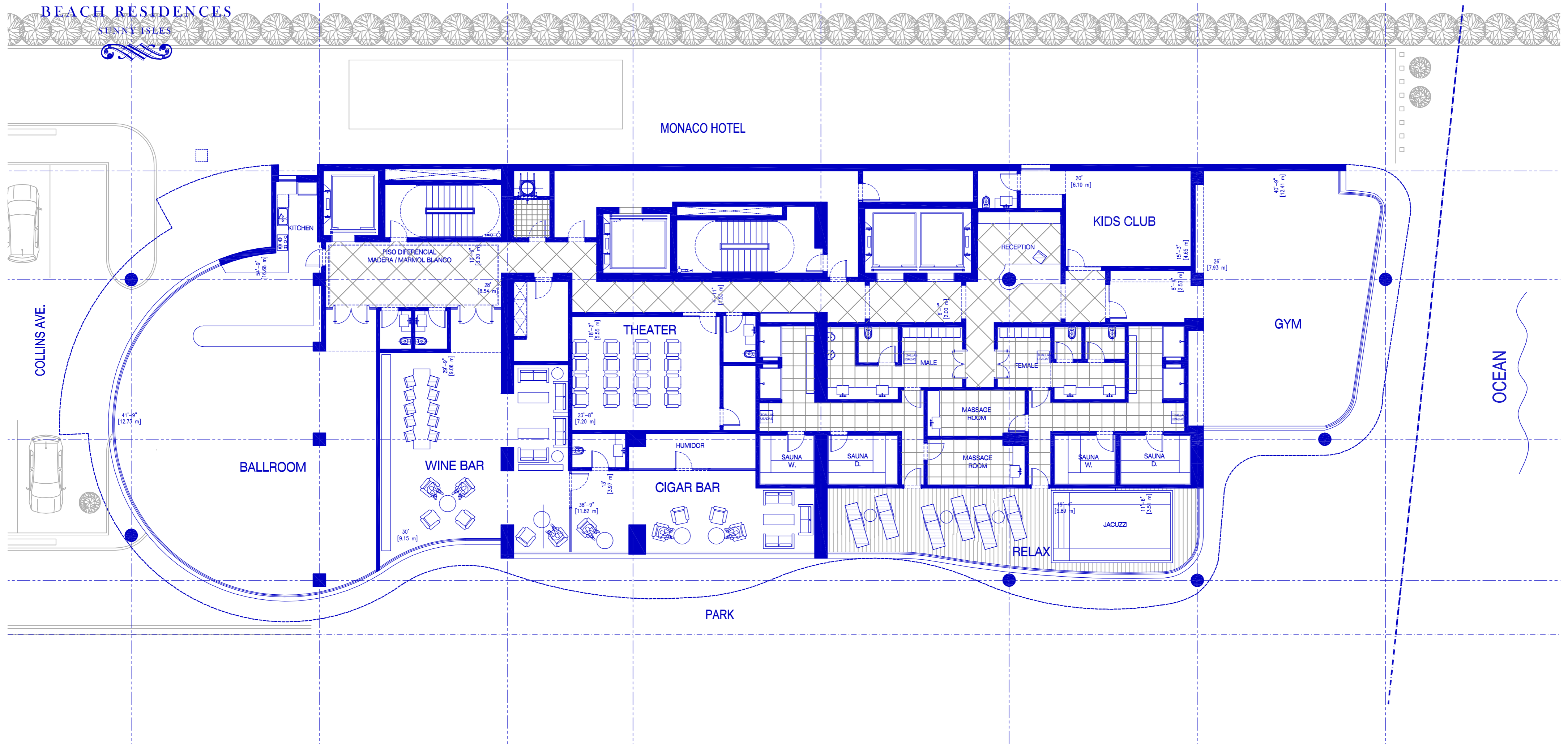
All dimensions are approximate and all floor plans and development plans are subject to change by the developer without notice. Stated dimensions are measured to the exterior boundaries of the exterior walls and the centerline of interior demising walls and in fact vary from the dimensions that would be determined by using the description and definition of the "Unit" set forth in the Declaration (which generally only includes the interior air space between the perimeter walls and excludes interior structural components). The seller reserves the absolute right, in its sole judgment and discretion, to substitute appliances, materials, fixtures, and equipment of equal or great quality or value for those specified.



CHATEAU

BEACH RESIDENCES

SUNNY ISLES



2ND LEVEL
REV. 22

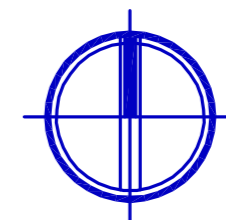
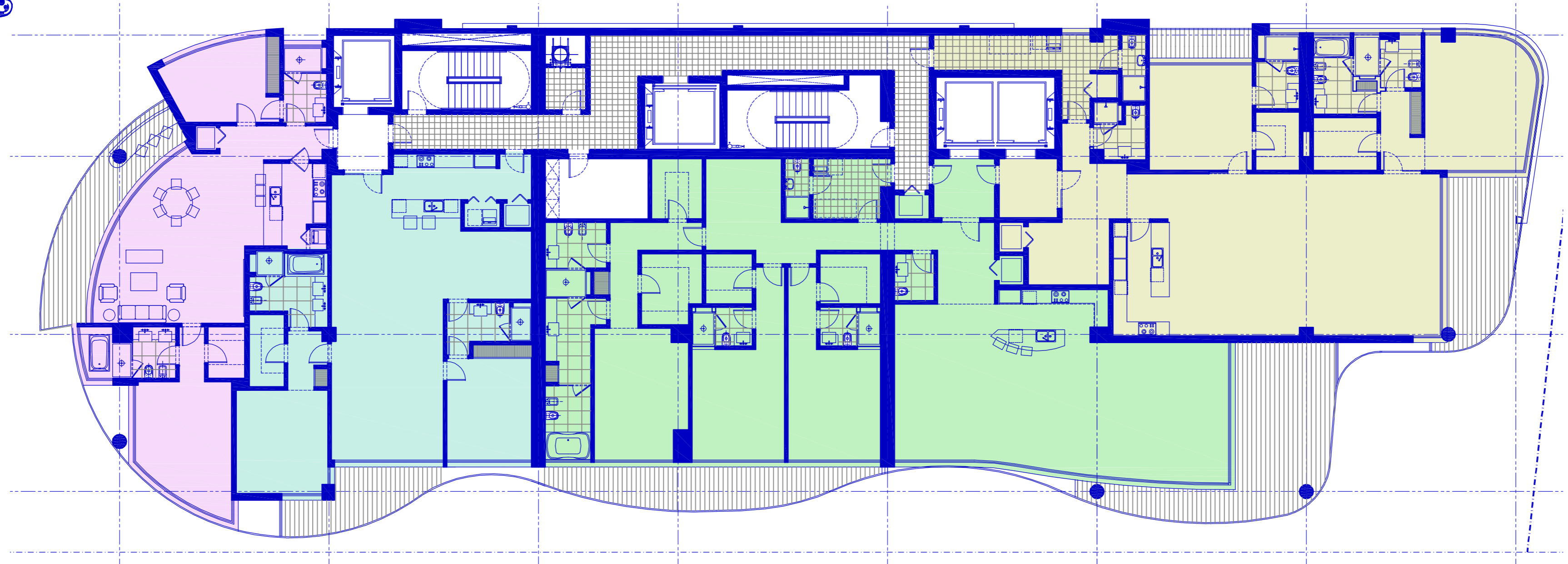
All dimensions are approximate and all floor plans and development plans are subject to change by the developer without notice. Stated dimensions are measured to the exterior boundaries of the exterior walls and the centerline of interior demising walls and in fact vary from the dimensions that would be determined by using the description and definition of the "Unit" set forth in the Declaration (which generally only includes the interior air space between the perimeter walls and excludes interior structural components). The seller reserves the absolute right, in its sole judgment and discretion, to substitute appliances, materials, fixtures, and equipment of equal or great quality or value for those specified.



CHÂTEAU

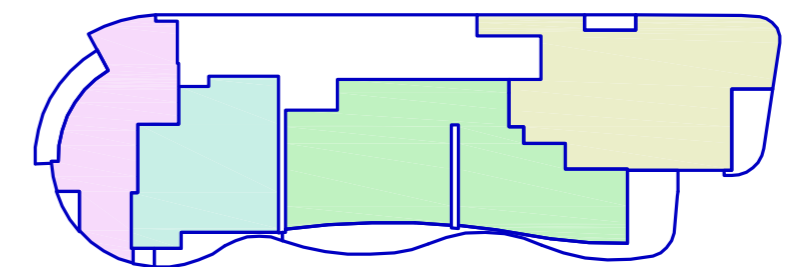
BEACH RESIDENCES

SUNNY ISLES



Monaco Hotel

Collins Ave.



Park

Ocean

LEVEL
5° TO 14°
(NOT INCLUDING 13°)

REV.23

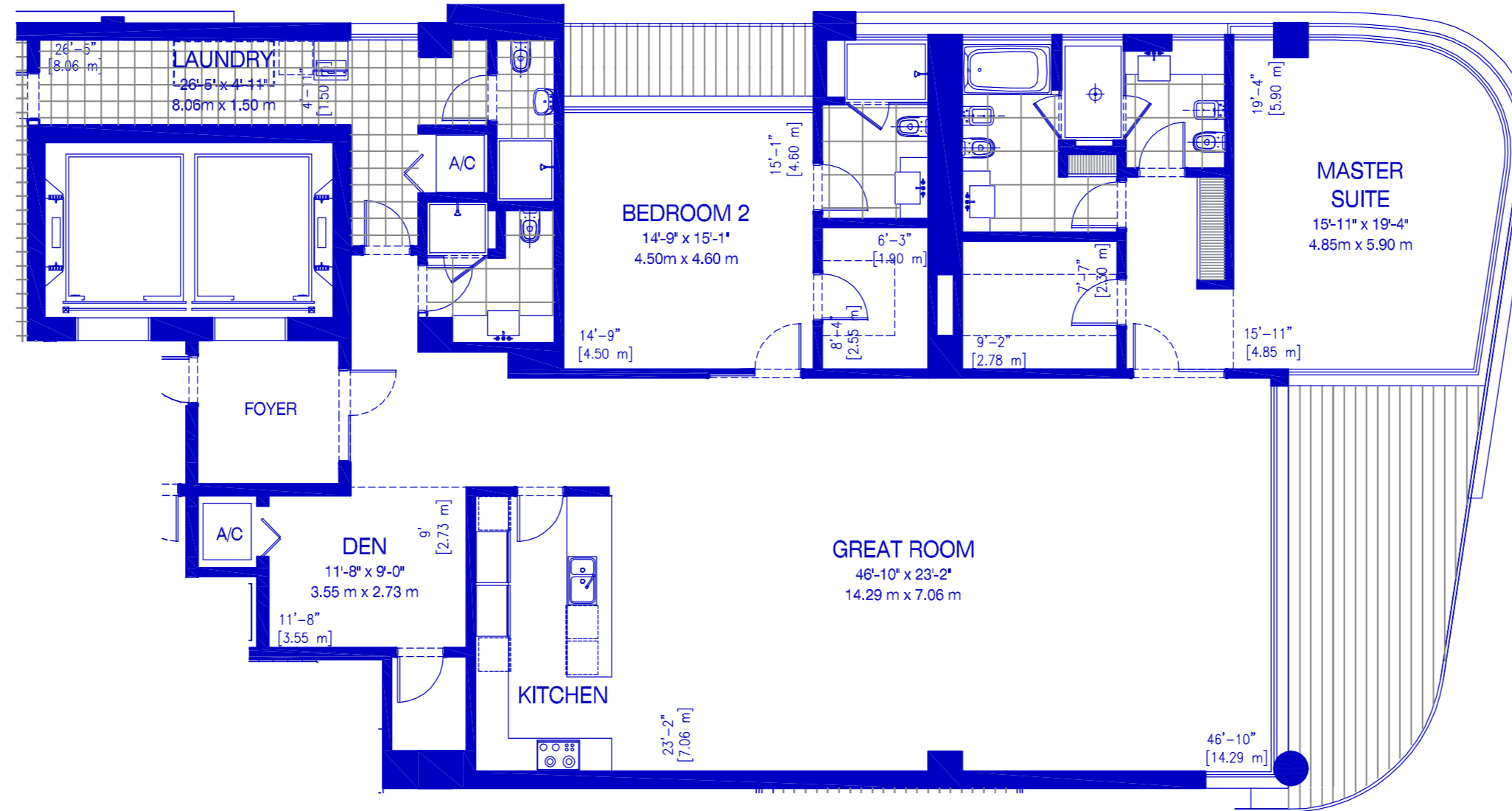
All dimensions are approximate and all floor plans and development plans are subject to change by the developer without notice. Stated dimensions are measured to the exterior boundaries of the exterior walls and the centerline of interior demising walls and in fact vary from the dimensions that would be determined by using the description and definition of the "Unit" set forth in the Declaration (which generally only includes the interior air space between the perimeter walls and excludes interior structural components). The seller reserves the absolute right, in its sole judgment and discretion, to substitute appliances, materials, fixtures, and equipment of equal or great quality or value for those specified.



CHÂTEAU

BEACH RESIDENCES

SUNNY ISLES



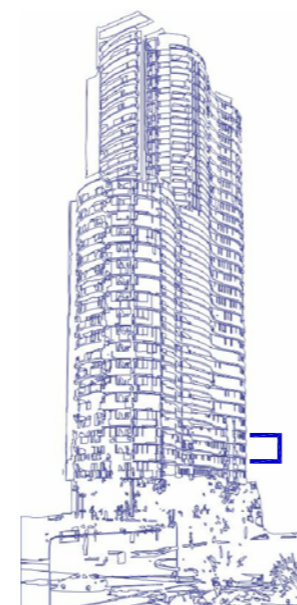
2° TO 3° RESIDENCE 01 2 BEDROOMS + DEN / 4 & 1/2 BATH

Interior: 2,926 SF 272 M²

Exterior: 299 SF 28 M²

Total:	3,225 SF	300 M ²
--------	----------	--------------------

REV. 23

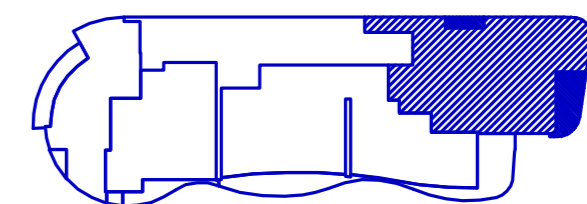


RESIDENCES 01



Monaco Hotel

Collins Ave.



Park

Ocean

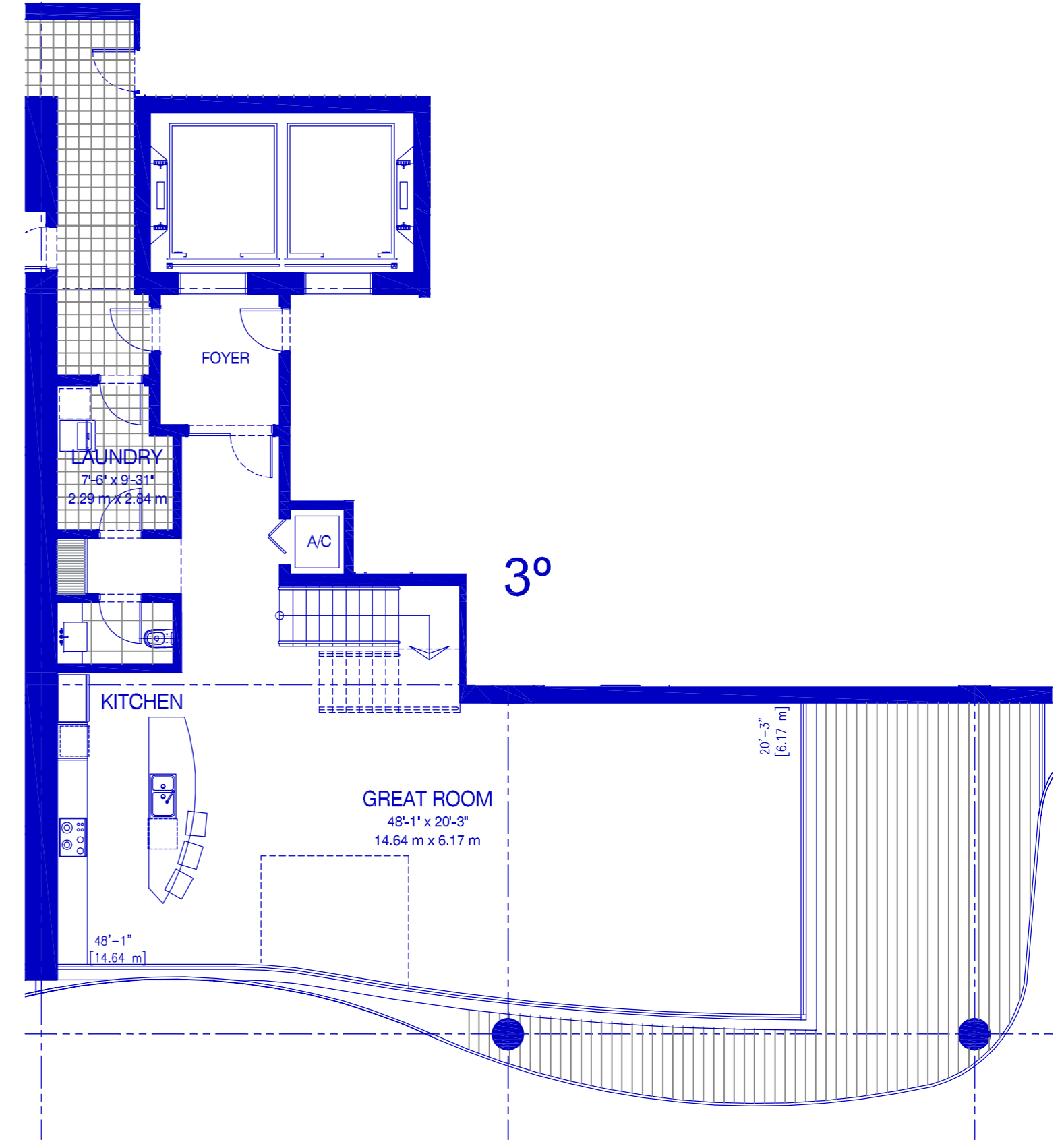
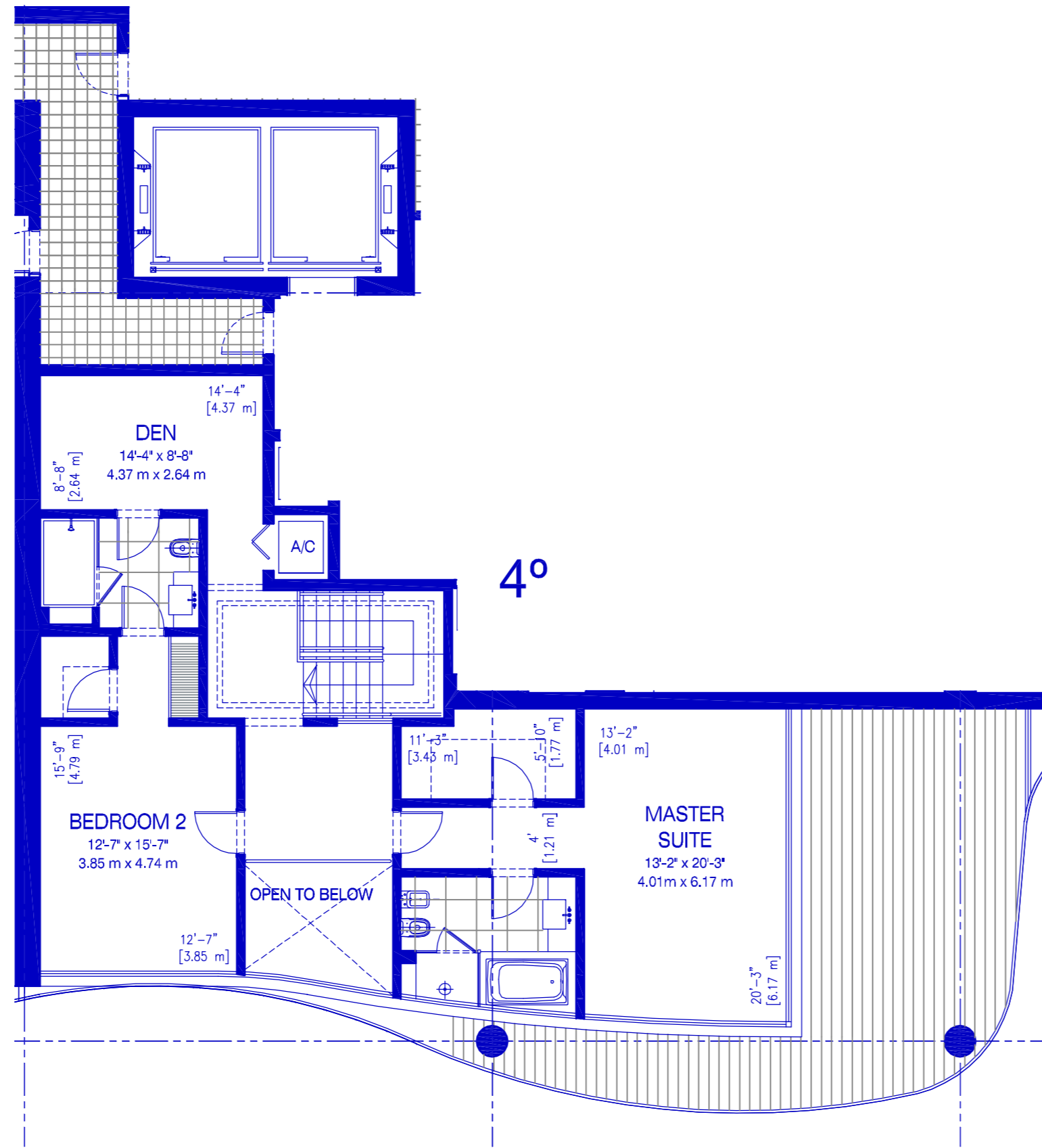
All dimensions are approximate and all floor plans and development plans are subject to change by the developer without notice. Stated dimensions are measured to the exterior boundaries of the exterior walls and the centerline of interior demising walls and in fact vary from the dimensions that would be determined by using the description and definition of the "Unit" set forth in the Declaration (which generally only includes the interior air space between the perimeter walls and excludes interior structural components). The seller reserves the absolute right, in its sole judgment and discretion, to substitute appliances, materials, fixtures, and equipment of equal or great quality or value for those specified.



CHÂTEAU

BEACH RESIDENCES

SUNNY ISLES



3° & 4°

RESIDENCE 02

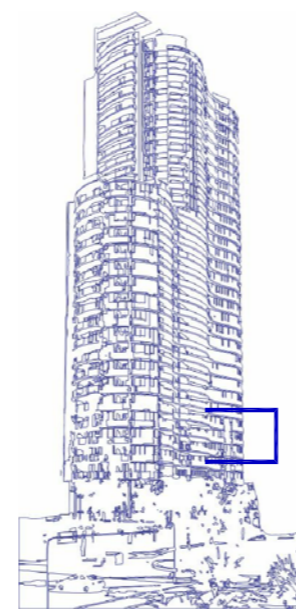
2 BEDROOMS + DEN / 2-1/2 BATH

Interior: 2,691 SF 250 M²

Exterior: 871 SF 81 M²

Total:	3,562 SF	331 M ²
--------	----------	--------------------

REV. 23

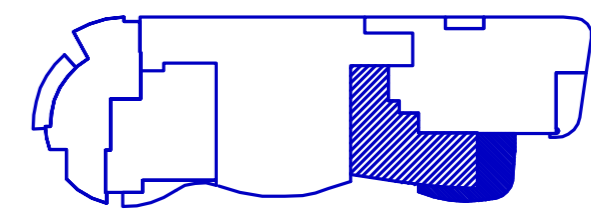


RESIDENCE 02



Monaco Hotel

Collins Ave.



Park

Ocean

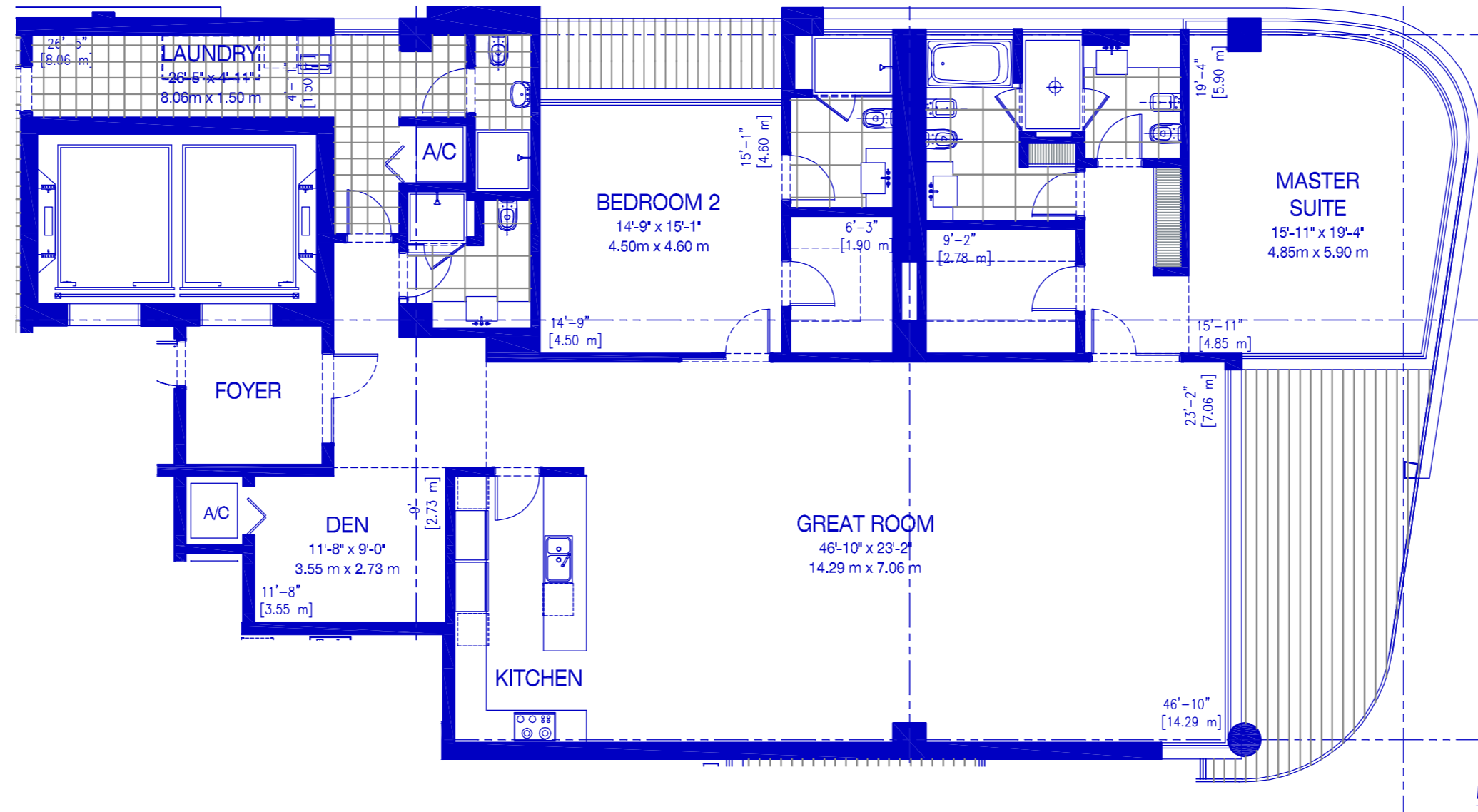
All dimensions are approximate and all floor plans and development plans are subject to change by the developer without notice. Stated dimensions are measured to the exterior boundaries of the exterior walls and the centerline of interior demising walls and in fact vary from the dimensions that would be determined by using the description and definition of the "Unit" set forth in the Declaration (which generally only includes the interior air space between the perimeter walls and excludes interior structural components). The seller reserves the absolute right, in its sole judgment and discretion, to substitute appliances, materials, fixtures, and equipment of equal or great quality or value for those specified.



CHÂTEAU

BEACH RESIDENCES

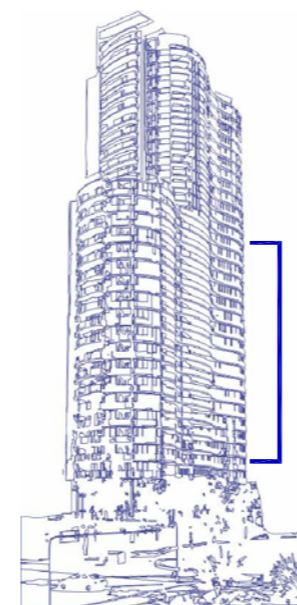
SUNNY ISLES



5° TO 23°
RESIDENCE 01
 2 BEDROOMS + DEN / 4 & 1/2 BATH

Interior:	2,890 SF	268 M ²
Exterior:	301 SF	28 M ²
Total:	3,191 SF	296 M²

REV. 23

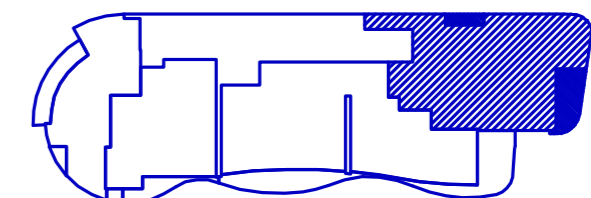


RESIDENCES 01



Monaco Hotel

Collins Ave.



Park

Ocean

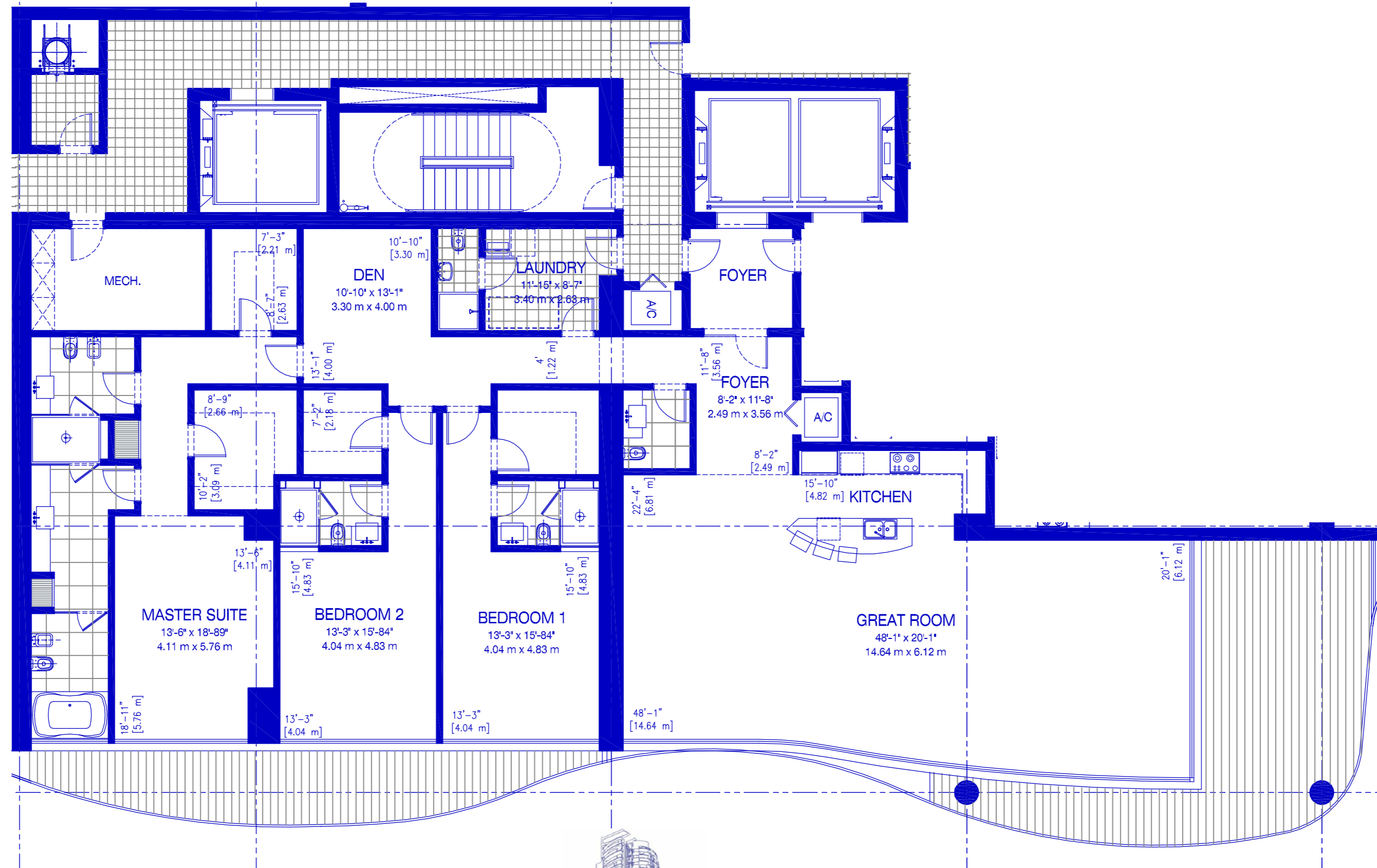
All dimensions are approximate and all floor plans and development plans are subject to change by the developer without notice. Stated dimensions are measured to the exterior boundaries of the exterior walls and the centerline of interior demising walls and in fact vary from the dimensions that would be determined by using the description and definition of the "Unit" set forth in the Declaration (which generally only includes the interior air space between the perimeter walls and excludes interior structural components). The seller reserves the absolute right, in its sole judgment and discretion, to substitute appliances, materials, fixtures, and equipment of equal or great quality or value for those specified.



CHÂTEAU

BEACH RESIDENCES

SUNNY ISLES



5° TO 23°

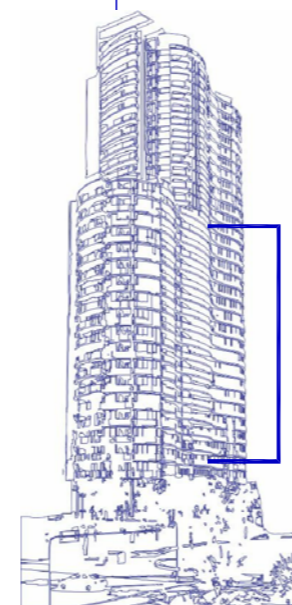
RESIDENCE 02

3 BEDROOMS + DEN / 4 & (2) 1/2 BATH

Interior:	3,466 SF	322 M ²
Exterior:	678 SF	63 M ²

Total:	4,144 SF	385 M ²
--------	----------	--------------------

REV. 23

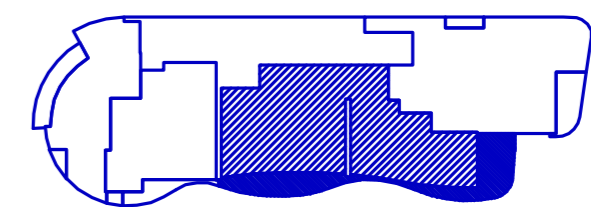


RESIDENCES 02



Monaco Hotel

Collins Ave.



Park

Ocean

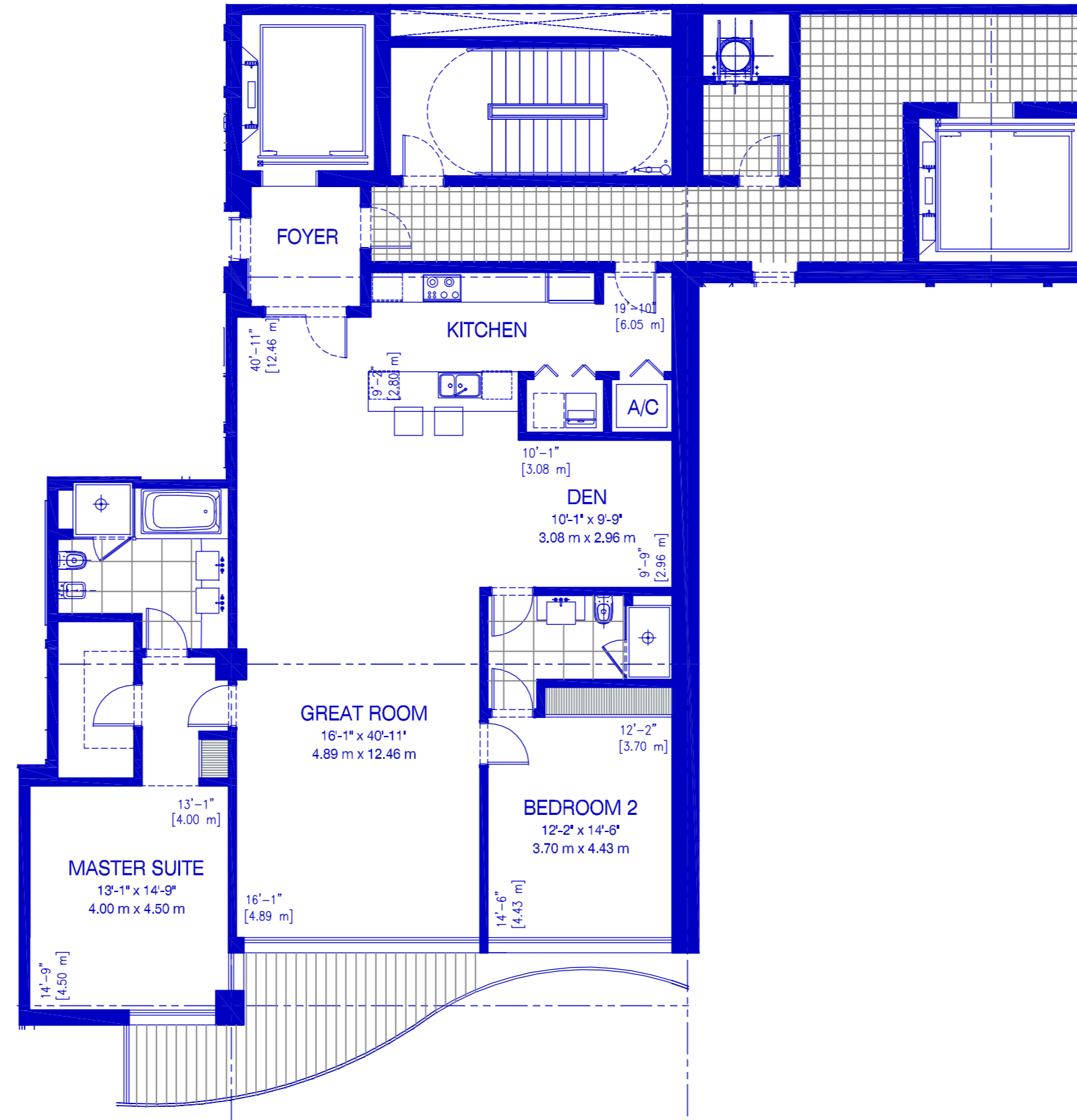
All dimensions are approximate and all floor plans and development plans are subject to change by the developer without notice. Stated dimensions are measured to the exterior boundaries of the exterior walls and the centerline of interior demising walls and in fact vary from the dimensions that would be determined by using the description and definition of the "Unit" set forth in the Declaration (which generally only includes the interior air space between the perimeter walls and excludes interior structural components). The seller reserves the absolute right, in its sole judgment and discretion, to substitute appliances, materials, fixtures, and equipment of equal or greater quality or value for those specified.



CHÂTEAU

BEACH RESIDENCES

SUNNY ISLES

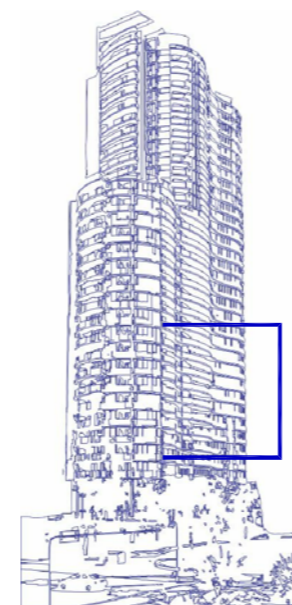


3° TO 14°
RESIDENCE 03
2 BEDROOMS / 2 BATH

Interior: 1,742 SF 162 M²
Exterior: 137 SF 13 M²

Total:	1,879 SF	175 M ²
--------	----------	--------------------

REV. 23

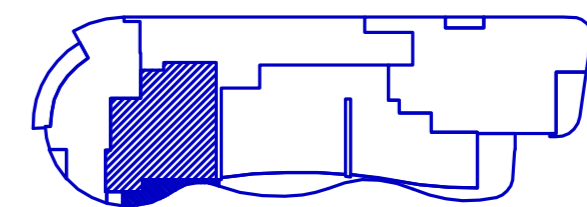


RESIDENCES 03



Monaco Hotel

Collins Ave.



Park

Ocean

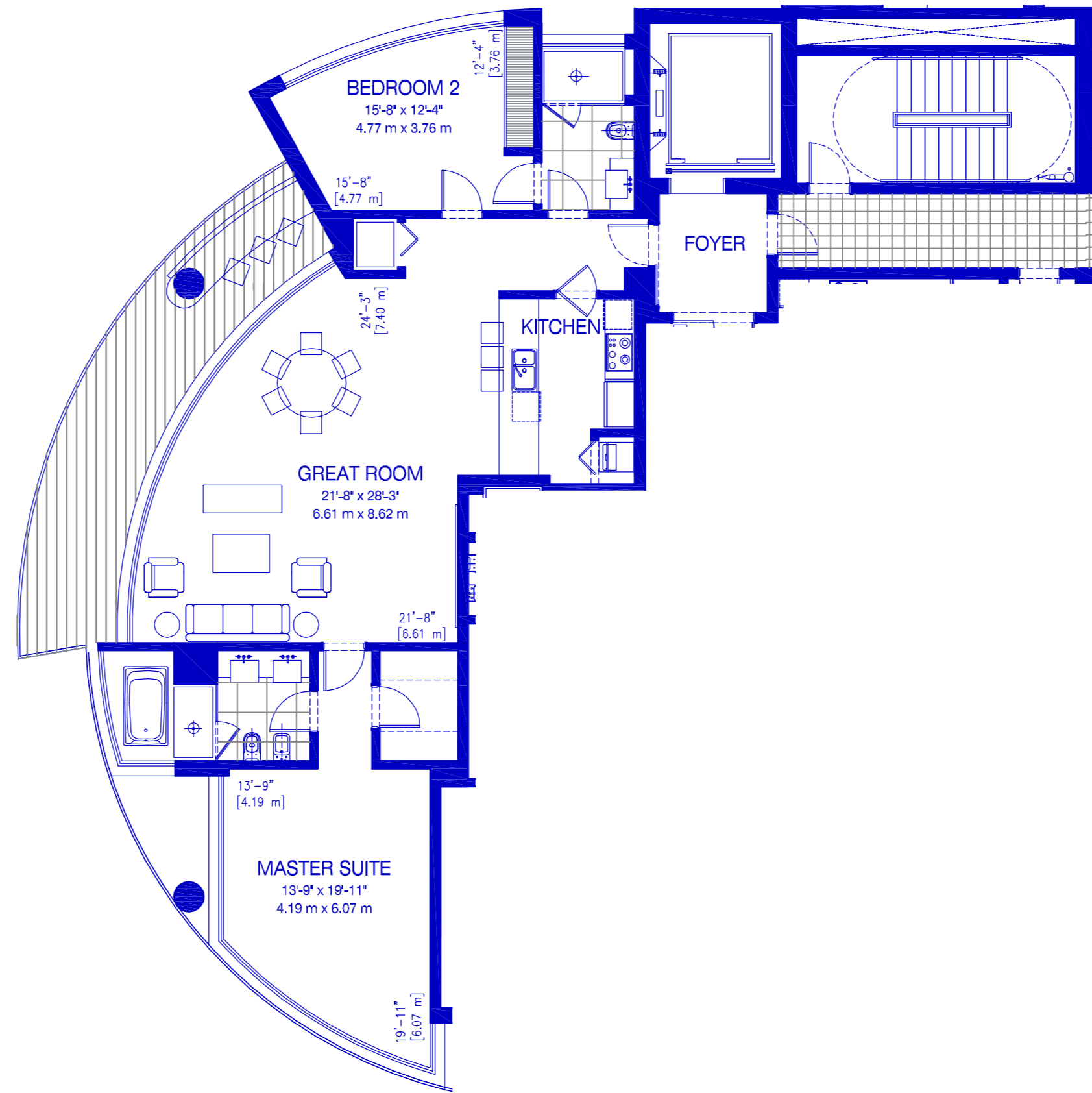
All dimensions are approximate and all floor plans and development plans are subject to change by the developer without notice. Stated dimensions are measured to the exterior boundaries of the exterior walls and the centerline of interior demising walls and in fact vary from the dimensions that would be determined by using the description and definition of the "Unit" set forth in the Declaration (which generally only includes the interior air space between the perimeter walls and excludes interior structural components). The seller reserves the absolute right, in its sole judgment and discretion, to substitute appliances, materials, fixtures, and equipment of equal or great quality or value for those specified.



CHÂTEAU

BEACH RESIDENCES

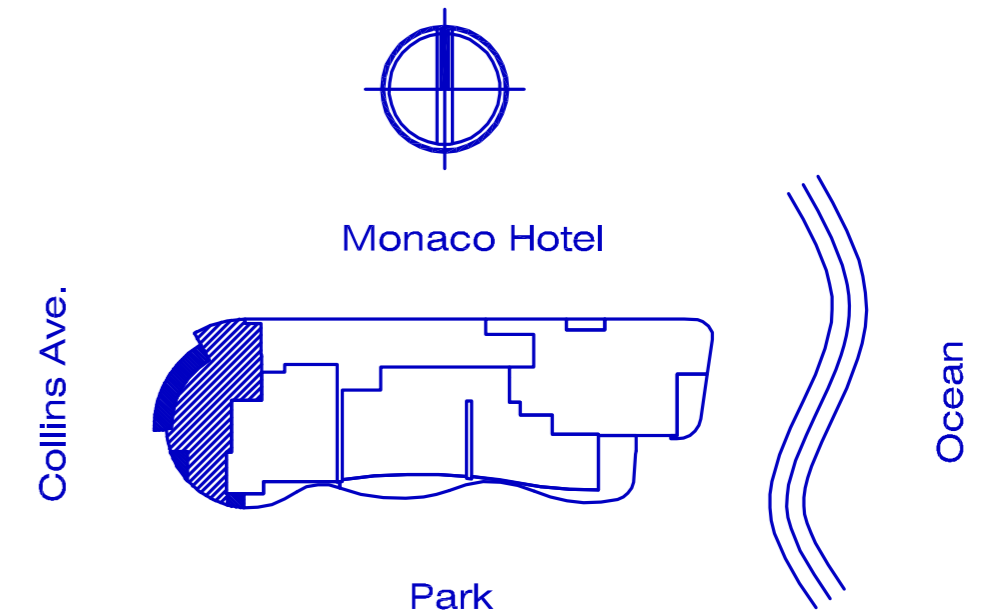
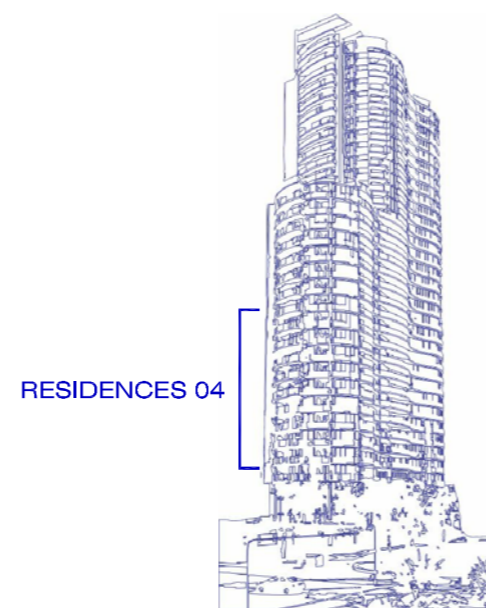
SUNNY ISLES



3° TO 14° RESIDENCE 04 2 BEDROOMS / 2 BATH

Interior:	1,488 SF	138 M ²
Exterior:	190 SF	18 M ²
Total:	1,678 SF	156 M²

REV. 23



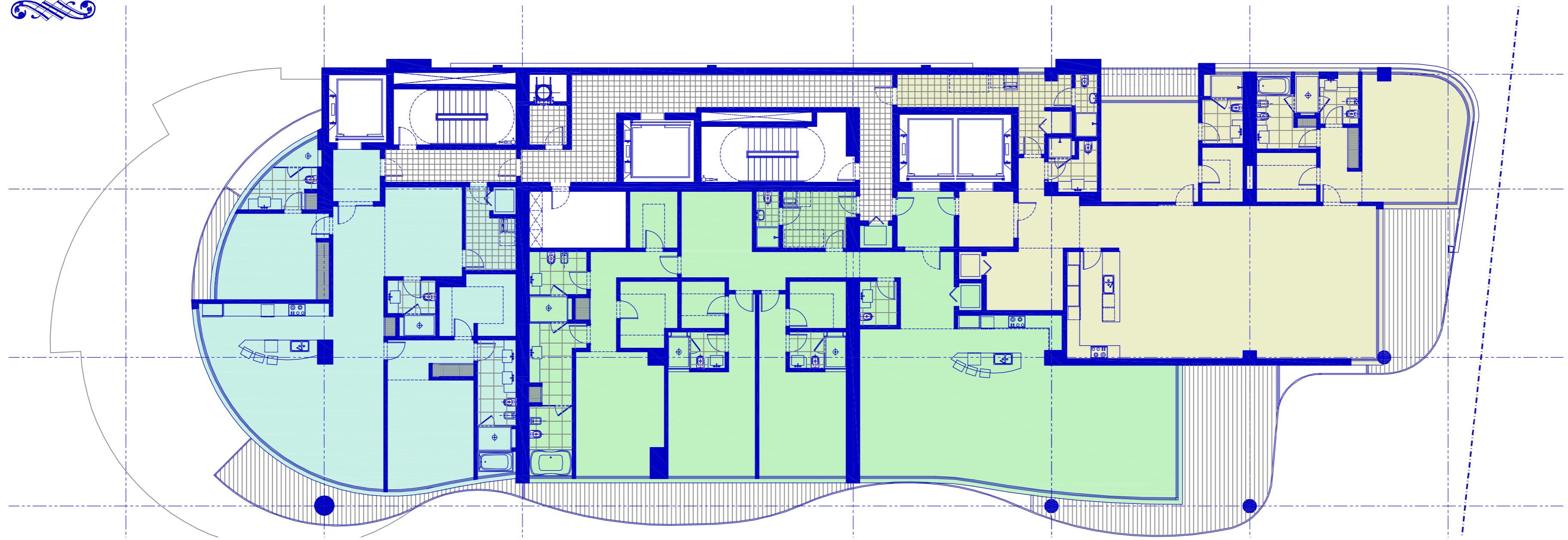
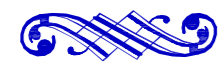
All dimensions are approximate and all floor plans and development plans are subject to change by the developer without notice. Stated dimensions are measured to the exterior boundaries of the exterior walls and the centerline of interior demising walls and in fact vary from the dimensions that would be determined by using the description and definition of the "Unit" set forth in the Declaration (which generally only includes the interior air space between the perimeter walls and excludes interior structural components). The seller reserves the absolute right, in its sole judgment and discretion, to substitute appliances, materials, fixtures, and equipment of equal or great quality or value for those specified.



CHÂTEAU

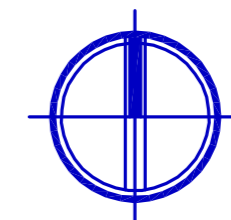
BEACH RESIDENCES

SUNNY ISLES



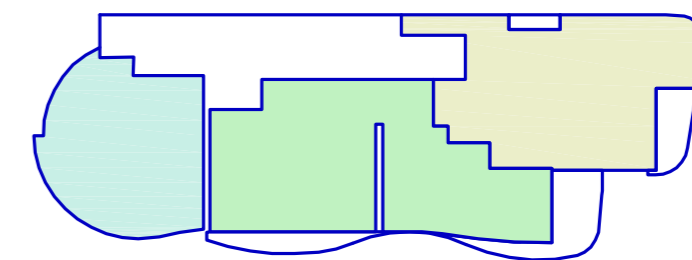
LEVEL
17° TO 24°

REV.23



Monaco Hotel

Collins Ave.



Park

Ocean

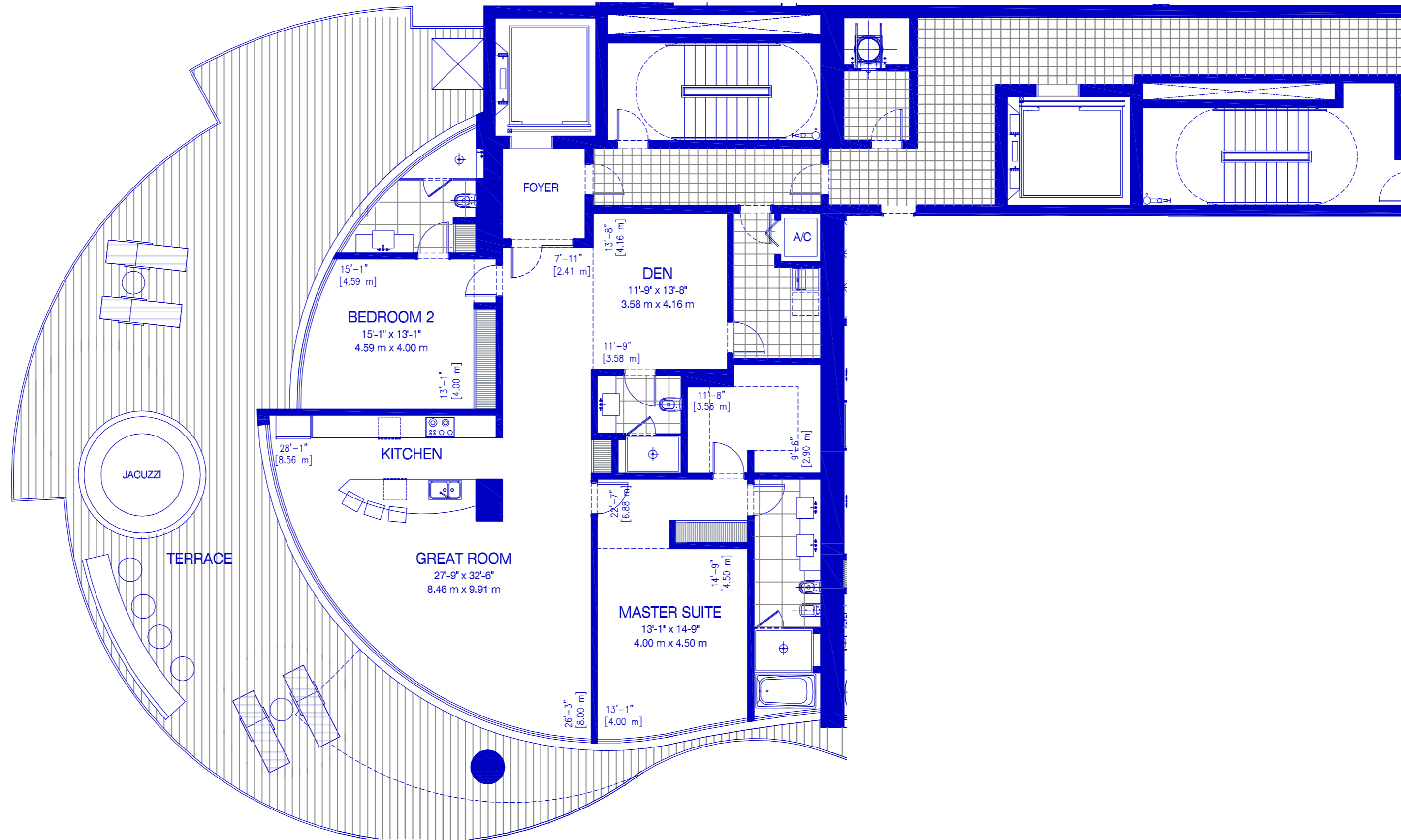
All dimensions are approximate and all floor plans and development plans are subject to change by the developer without notice. Stated dimensions are measured to the exterior boundaries of the exterior walls and the centerline of interior demising walls and in fact vary from the dimensions that would be determined by using the description and definition of the "Unit" set forth in the Declaration (which generally only includes the interior air space between the perimeter walls and excludes interior structural components). The seller reserves the absolute right, in its sole judgment and discretion, to substitute appliances, materials, fixtures, and equipment of equal or great quality or value for those specified.



CHÂTEAU

BEACH RESIDENCES

SUNNY ISLES



LEVEL 15°

3 BEDROOMS + DEN / 4 & 1/2 BATH

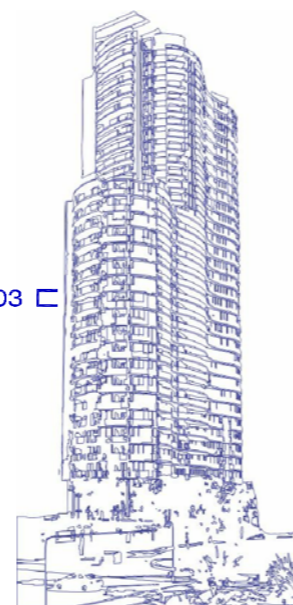
Interior: 4,219 SF 392 M²

Exterior: 1,840 SF 171 M²

Total:	6,059 SF	563 M ²
--------	----------	--------------------

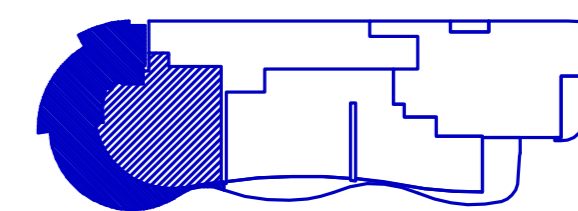
REV. 23

RESIDENCES 03



Monaco Hotel

Collins Ave.



Park

Ocean

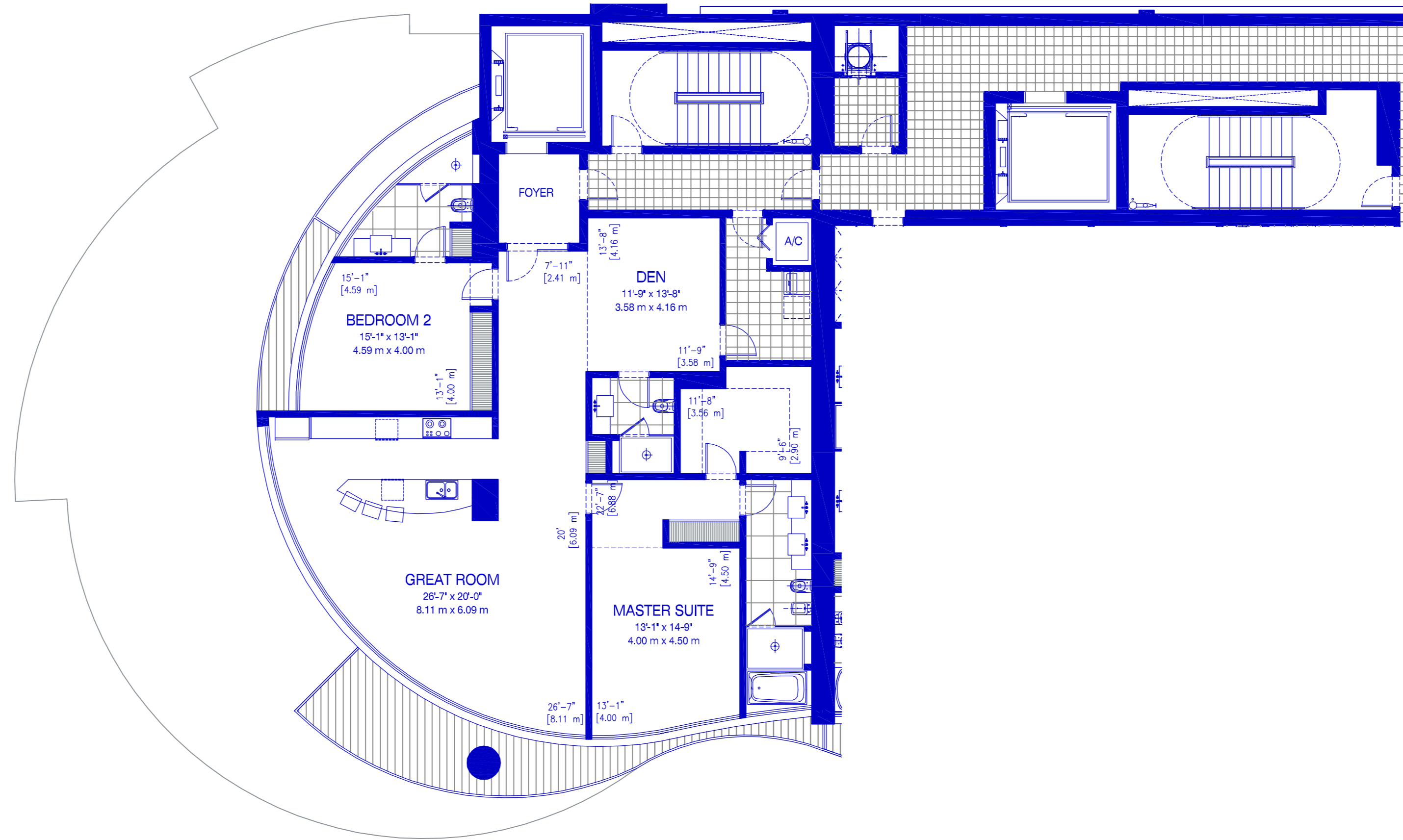
All dimensions are approximate and all floor plans and development plans are subject to change by the developer without notice. Stated dimensions are measured to the exterior boundaries of the exterior walls and the centerline of interior demising walls and in fact vary from the dimensions that would be determined by using the description and definition of the "Unit" set forth in the Declaration (which generally only includes the interior air space between the perimeter walls and excludes interior structural components). The seller reserves the absolute right, in its sole judgment and discretion, to substitute appliances, materials, fixtures, and equipment of equal or great quality or value for those specified.



CHÂTEAU

BEACH RESIDENCES

SUNNY ISLES

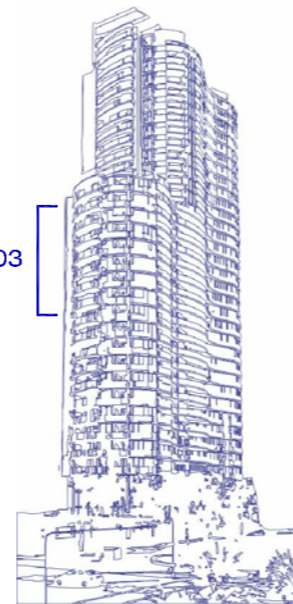


16° TO 24° RESIDENCE 03 2 BEDROOMS / 2 BATH

Interior:	2,109 SF	196 M ²
Exterior:	183 SF	17 M ²
Total:	2,292 SF	213 M²

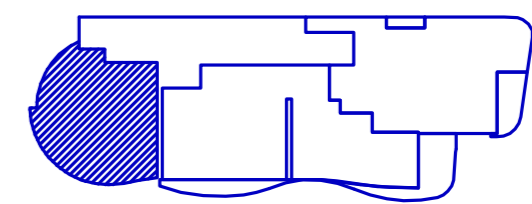
REV. 23

RESIDENCES 03



Monaco Hotel

Collins Ave.



Park

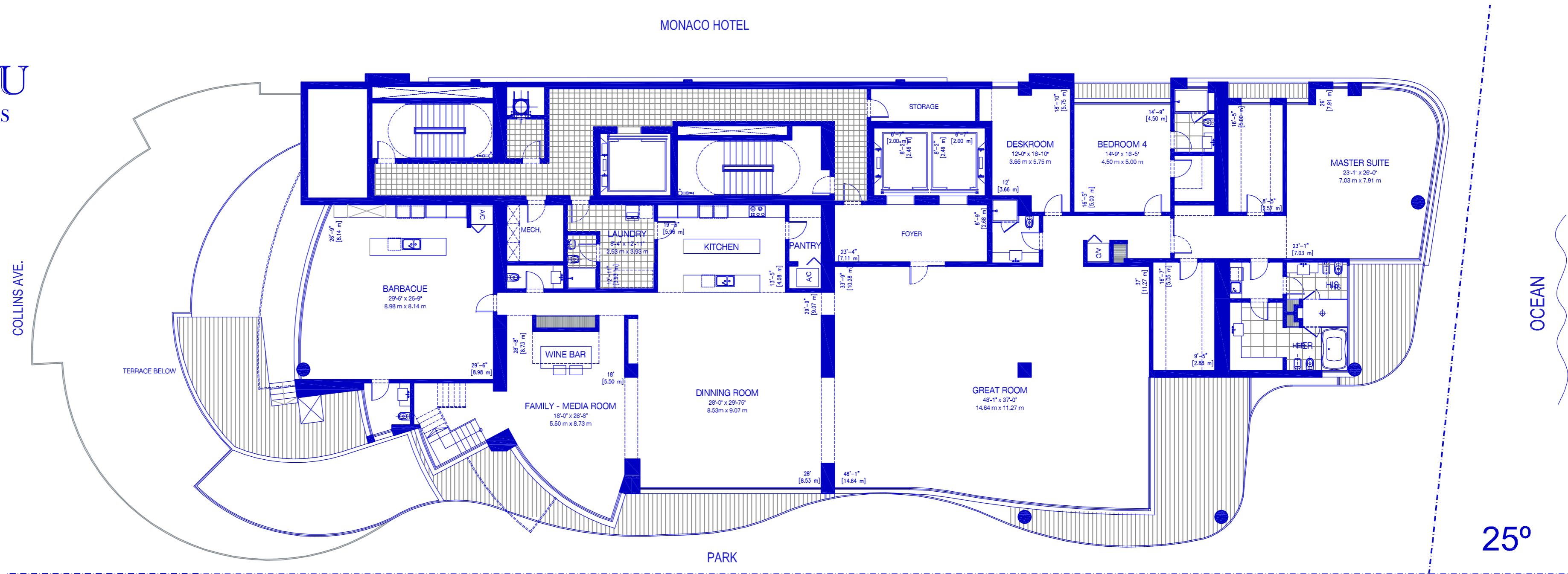
Ocean

All dimensions are approximate and all floor plans and development plans are subject to change by the developer without notice. Stated dimensions are measured to the exterior boundaries of the exterior walls and the centerline of interior demising walls and in fact vary from the dimensions that would be determined by using the description and definition of the "Unit" set forth in the Declaration (which generally only includes the interior air space between the perimeter walls and excludes interior structural components). The seller reserves the absolute right, in its sole judgment and discretion, to substitute appliances, materials, fixtures, and equipment of equal or great quality or value for those specified.



CHÂTEAU
 BEACH RESIDENCES
 SUNNY ISLES

MONACO HOTEL



25°

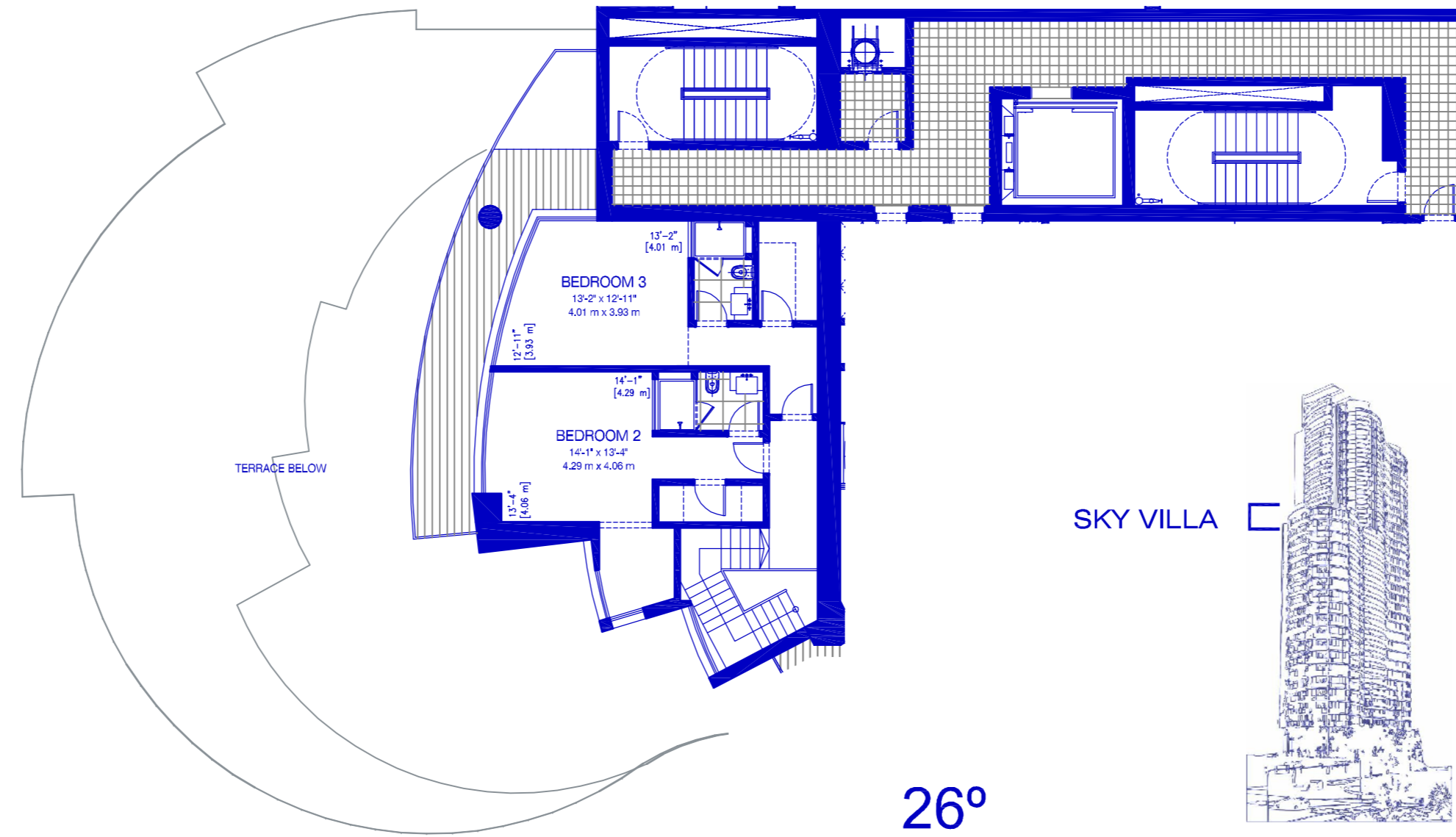
RESIDENCE COLLECTION
SKY VILLA LEVEL 25° & 26°

4 BEDROOMS / 6 + (3) 1/2 BATH

Interior: 8,557 SF 795 M²
 Exterior: 2,292 SF 213 M²

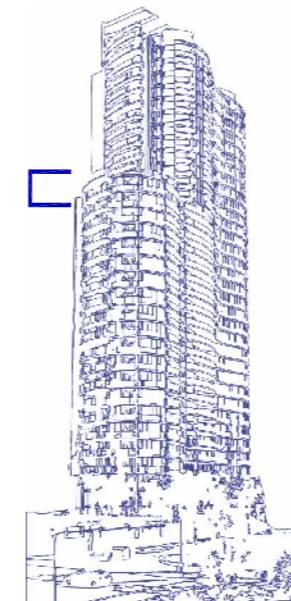
Total:	10,849 SF	1,008 M ²
--------	-----------	----------------------

REV. 23

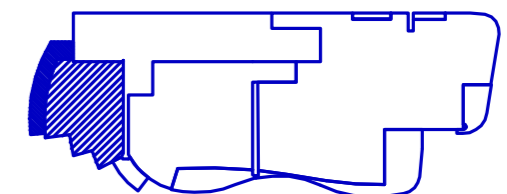


26°

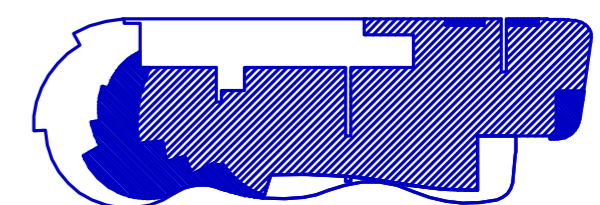
SKY VILLA



Monaco Hotel



Collins Ave.



Park

Ocean

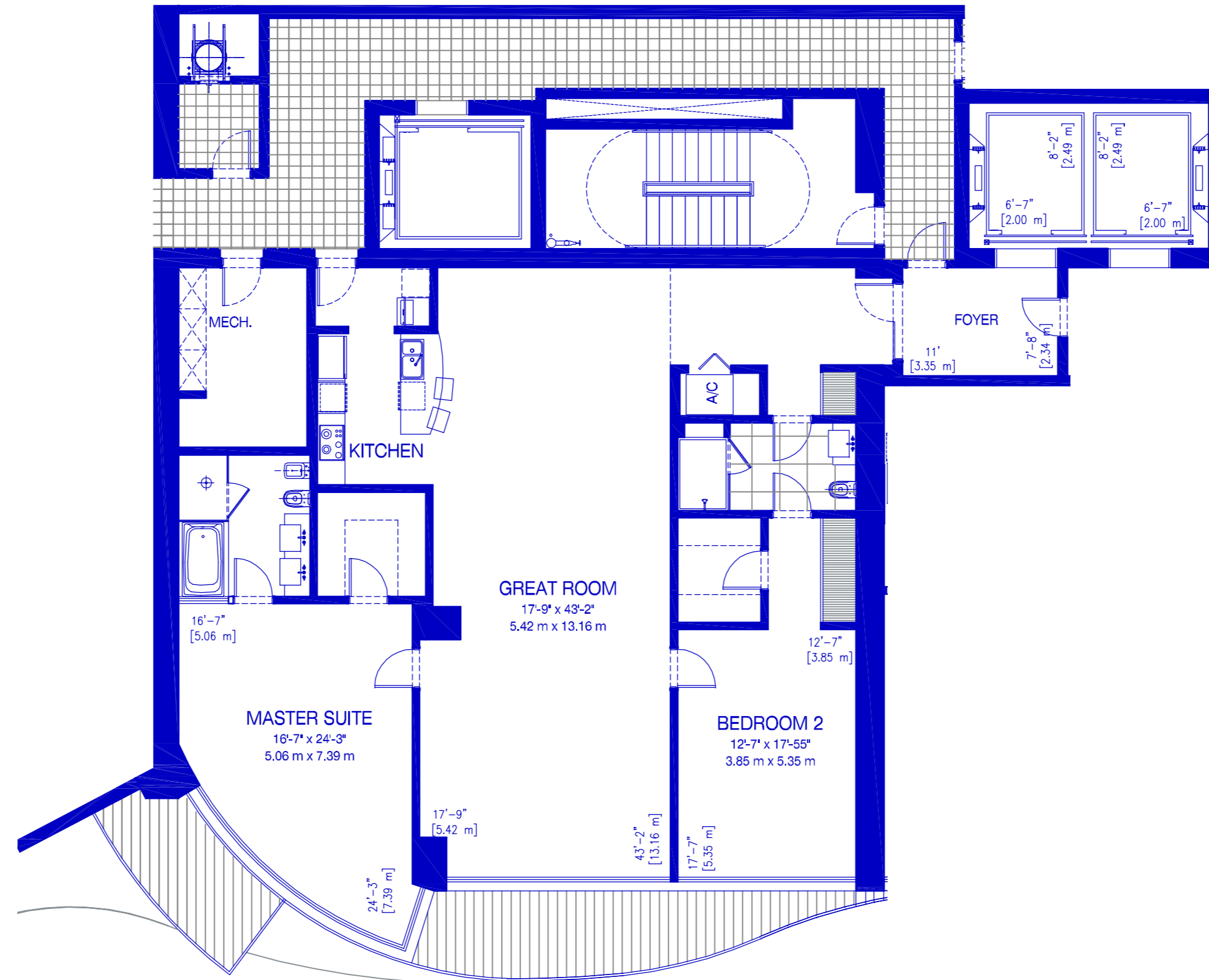
All dimensions are approximate and all floor plans and development plans are subject to change by the developer without notice. Stated dimensions are measured to the exterior boundaries of the exterior walls and the centerline of interior demising walls and in fact vary from the dimensions that would be determined by using the description and definition of the "Unit" set forth in the Declaration (which generally only includes the interior air space between the perimeter walls and excludes interior structural components). The seller reserves the absolute right, in its sole judgment and discretion, to substitute appliances, materials, fixtures, and equipment of equal or greater quality or value for those specified.



CHÂTEAU

BEACH RESIDENCES

SUNNY ISLES

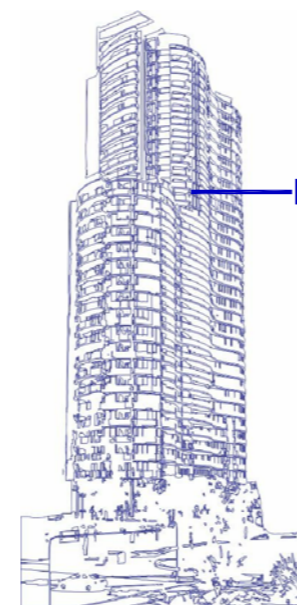


26^o
RESIDENCE 02
2 BEDROOMS / 2 BATH

Interior: 2,120 SF 197 M²
Exterior: 237 SF 22 M²

Total:	2,357 SF	219 M ²
--------	----------	--------------------

REV. 23

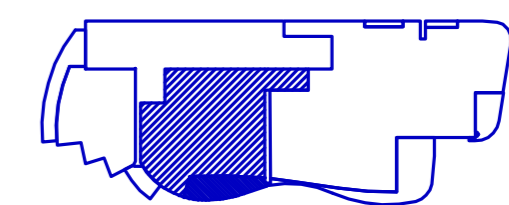


RESIDENCES 02



Monaco Hotel

Collins Ave.



Park

Ocean

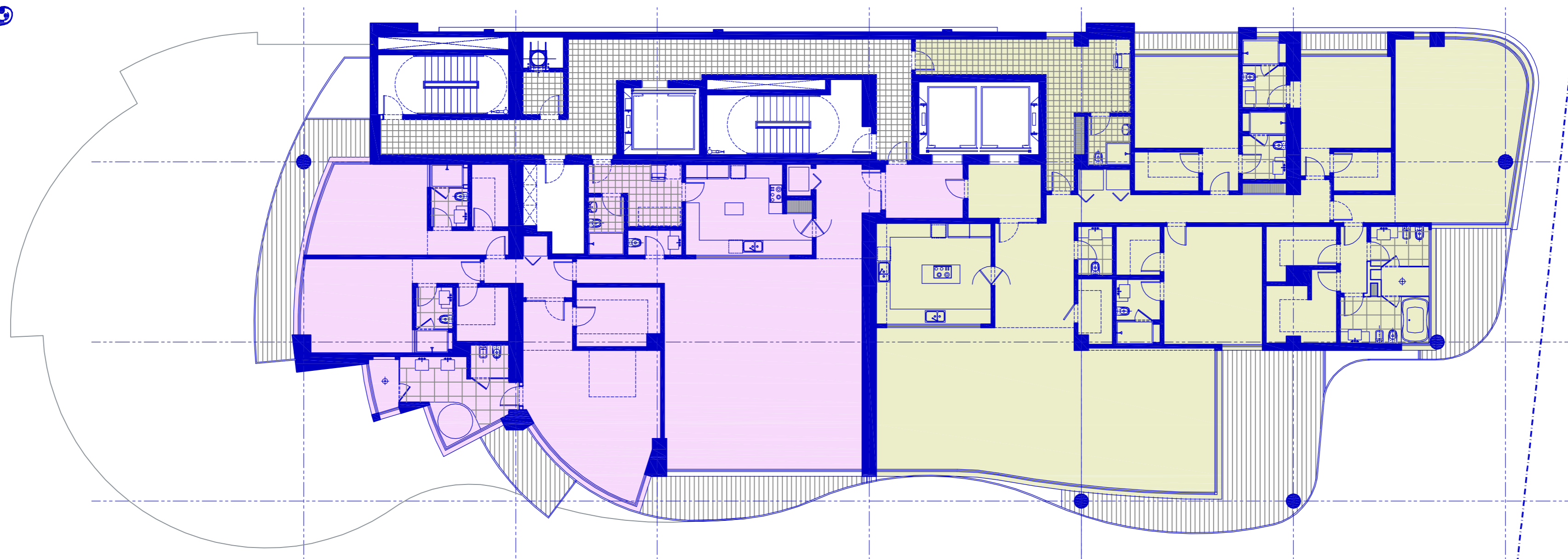
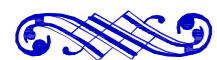
All dimensions are approximate and all floor plans and development plans are subject to change by the developer without notice. Stated dimensions are measured to the exterior boundaries of the exterior walls and the centerline of interior demising walls and in fact vary from the dimensions that would be determined by using the description and definition of the "Unit" set forth in the Declaration (which generally only includes the interior air space between the perimeter walls and excludes interior structural components). The seller reserves the absolute right, in its sole judgment and discretion, to substitute appliances, materials, fixtures, and equipment of equal or great quality or value for those specified.



CHÂTEAU

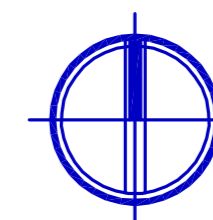
BEACH RESIDENCES

SUNNY ISLES



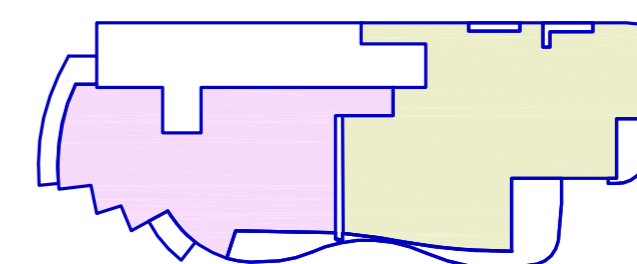
LEVEL
27° TO 31°

REV.23



Monaco Hotel

Collins Ave.



Park

Ocean

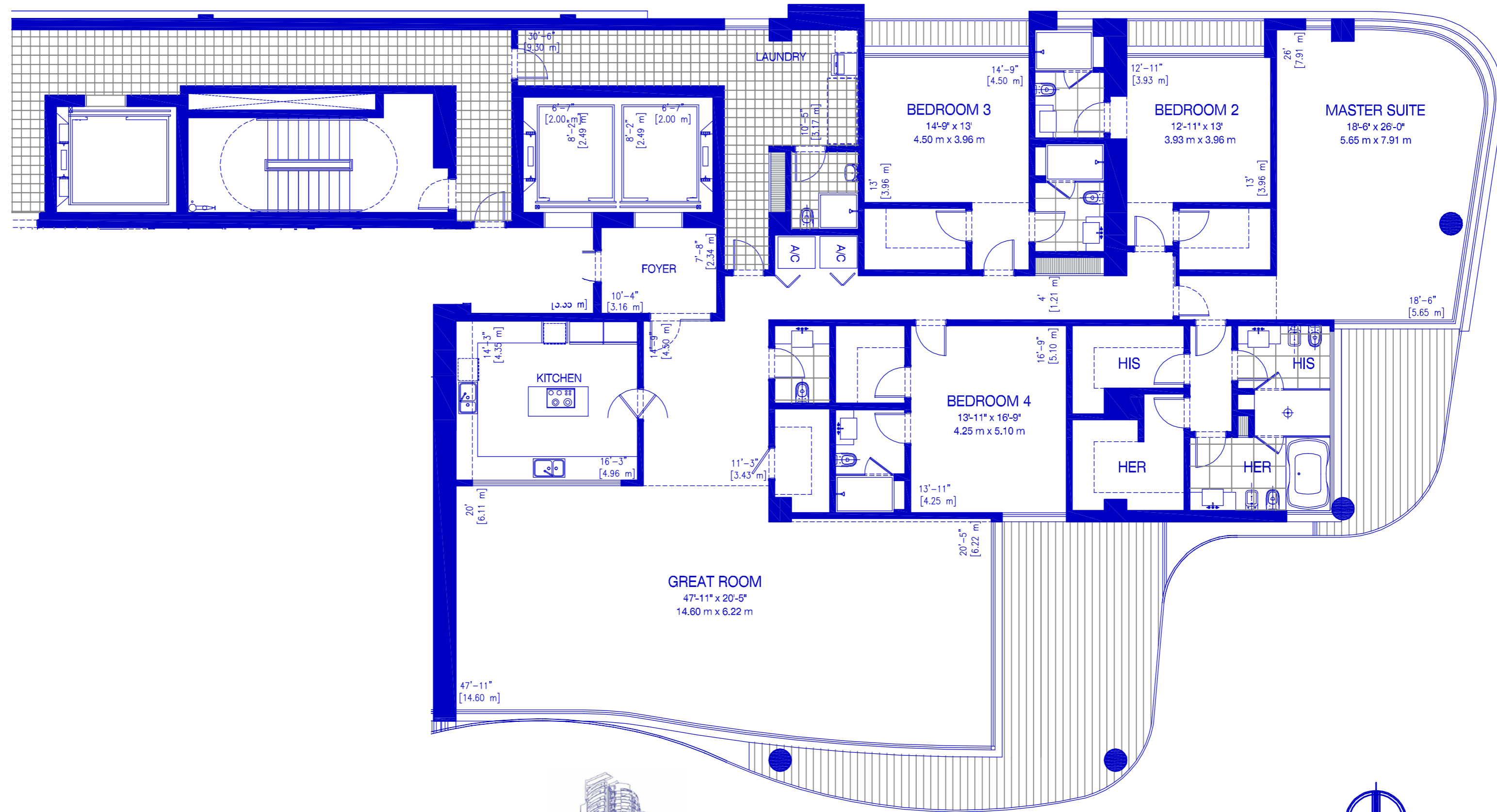
All dimensions are approximate and all floor plans and development plans are subject to change by the developer without notice. Stated dimensions are measured to the exterior boundaries of the exterior walls and the centerline of interior demising walls and in fact vary from the dimensions that would be determined by using the description and definition of the "Unit" set forth in the Declaration (which generally only includes the interior air space between the perimeter walls and excludes interior structural components). The seller reserves the absolute right, in its sole judgment and discretion, to substitute appliances, materials, fixtures, and equipment of equal or great quality or value for those specified.



CHÂTEAU

BEACH RESIDENCES

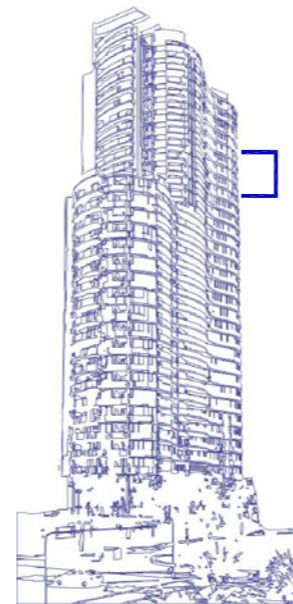
SUNNY ISLES



26° TO 31°
RESIDENCE 01
4 BEDROOMS / 6 BATH

Interior:	4,305 SF	400 M ²
Exterior:	669 SF	62 M ²
Total:	4,972 SF	462 M²

REV. 23

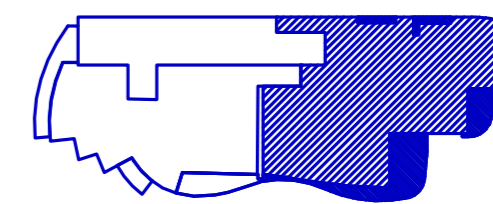


RESIDENCES 01



Monaco Hotel

Collins Ave.



Park

Ocean

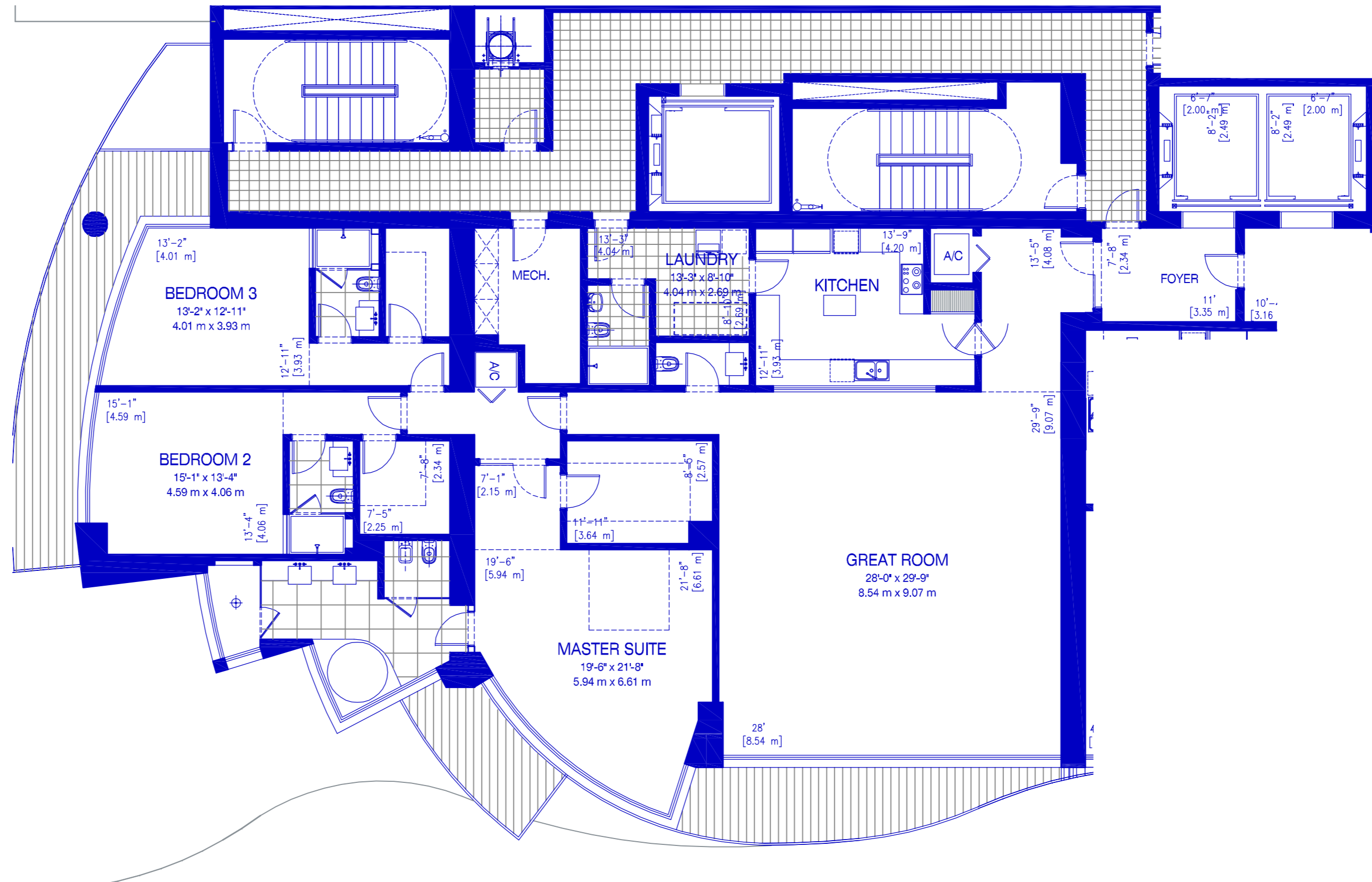
All dimensions are approximate and all floor plans and development plans are subject to change by the developer without notice. Stated dimensions are measured to the exterior boundaries of the exterior walls and the centerline of interior demising walls and in fact vary from the dimensions that would be determined by using the description and definition of the "Unit" set forth in the Declaration (which generally only includes the interior air space between the perimeter walls and excludes interior structural components). The seller reserves the absolute right, in its sole judgment and discretion, to substitute appliances, materials, fixtures, and equipment of equal or great quality or value for those specified.



CHÂTEAU

BEACH RESIDENCES

SUNNY ISLES



27° TO 31°
RESIDENCE 02

3 BEDROOMS / 3 (2) 1/2 BATH

Interior:	3,100 SF	288 M ²
Exterior:	452 SF	42 M ²

Total:	3,552 SF	330 M ²
--------	----------	--------------------

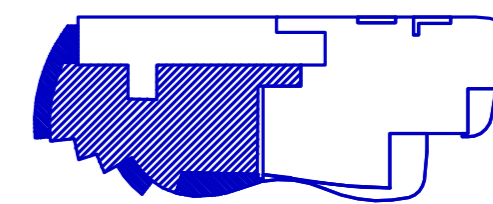
REV. 23

RESIDENCES 02



Monaco Hotel

Collins Ave.



Park

Ocean

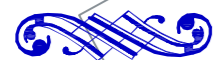
All dimensions are approximate and all floor plans and development plans are subject to change by the developer without notice. Stated dimensions are measured to the exterior boundaries of the exterior walls and the centerline of interior demising walls and in fact vary from the dimensions that would be determined by using the description and definition of the "Unit" set forth in the Declaration (which generally only includes the interior air space between the perimeter walls and excludes interior structural components). The seller reserves the absolute right, in its sole judgment and discretion, to substitute appliances, materials, fixtures, and equipment of equal or great quality or value for those specified.



CHÂTEAU

BEACH RESIDENCES

SUNNY ISLES

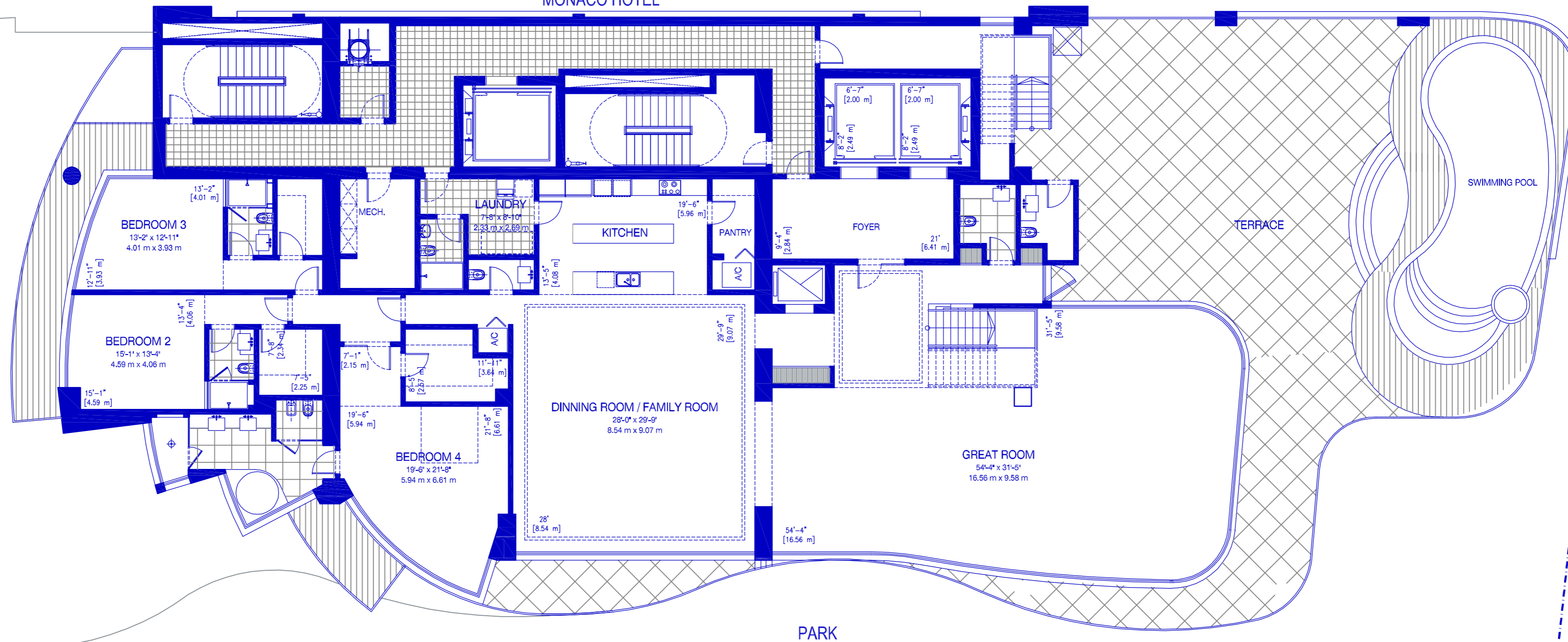


MONACO HOTEL

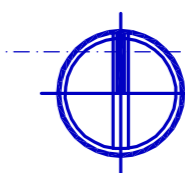
COLLINS AVE.

OCEAN

TERRACE BELOW

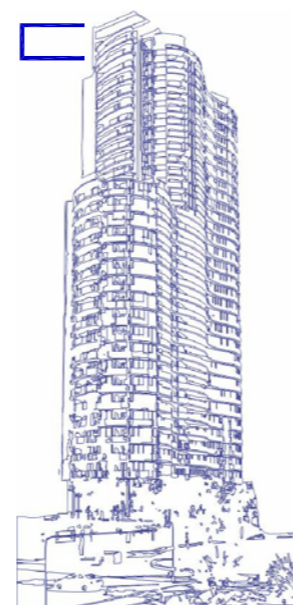


PARK

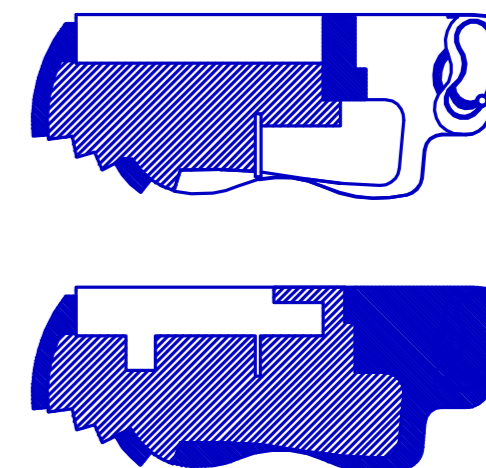


Monaco Hotel

PENT HOUSE VILLA



Collins Ave.



Park

Ocean

RESIDENCE COLLECTION

PENT HOUSE VILLA LEVEL 32° & 33°

4 BEDROOMS / 6 + (2) 1/2 BATH

Interior: 9,300 SF 864 M²

Exterior: 4,160 SF 386 M²

Total:	13,460 SF	1250.00 M ²
--------	-----------	------------------------

REV. 23

All dimensions are approximate and all floor plans and development plans are subject to change by the developer without notice. Stated dimensions are measured to the exterior boundaries of the exterior walls and the centerline of interior demising walls and in fact vary from the dimensions that would be determined by using the description and definition of the "Unit" set forth in the Declaration (which generally only includes the interior air space between the perimeter walls and excludes interior structural components). The seller reserves the absolute right, in its sole judgment and discretion, to substitute appliances, materials, fixtures, and equipment of equal or great quality or value for those specified.



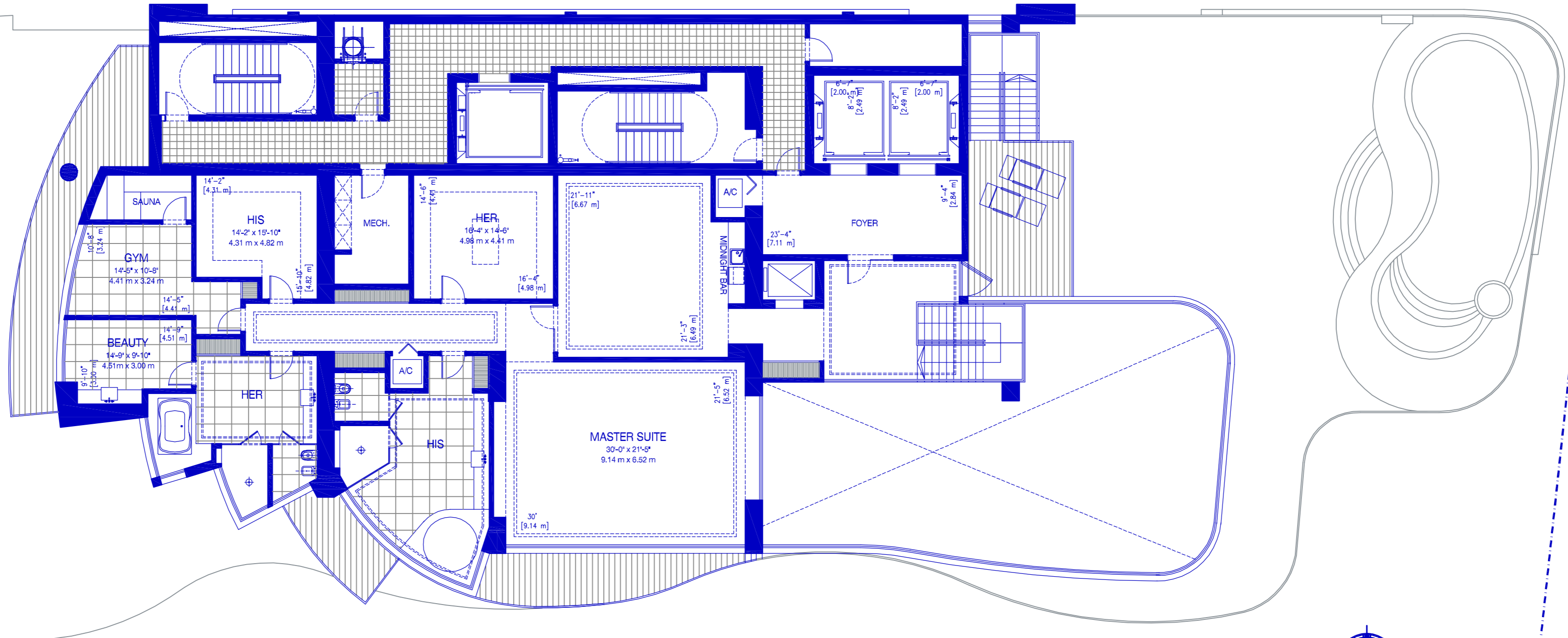
CHÂTEAU

BEACH RESIDENCES

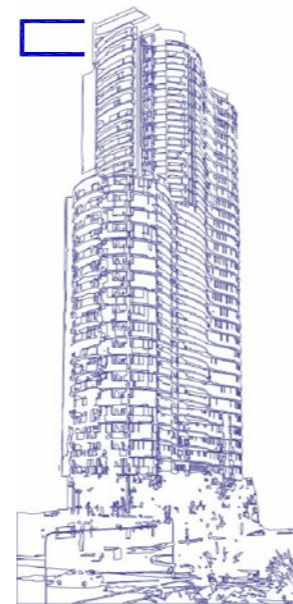
SUNNY ISLES



TERRACE BELOW



PENT HOUSE VILLA



RESIDENCE COLLECTION

PENT HOUSE VILLA LEVEL 32° & 33°

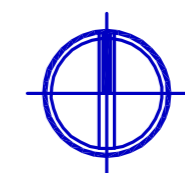
4 BEDROOMS / 6 + (2) 1/2 BATH

Interior: 9,300 SF 864 M²

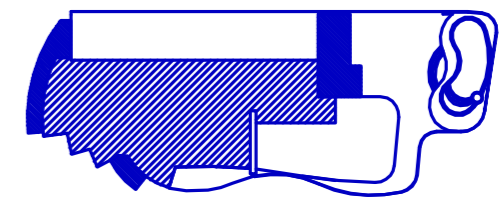
Exterior: 4,160 SF 386 M²

Total:	13,460 SF	1250.00 M ²
--------	-----------	------------------------

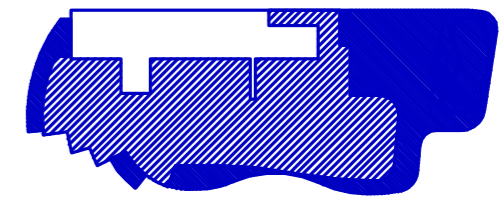
REV. 23



Monaco Hotel



Collins Ave.



Park

Ocean

All dimensions are approximate and all floor plans and development plans are subject to change by the developer without notice. Stated dimensions are measured to the exterior boundaries of the exterior walls and the centerline of interior demising walls and in fact vary from the dimensions that would be determined by using the description and definition of the "Unit" set forth in the Declaration (which generally only includes the interior air space between the perimeter walls and excludes interior structural components). The seller reserves the absolute right, in its sole judgment and discretion, to substitute appliances, materials, fixtures, and equipment of equal or great quality or value for those specified.