

MUSE

68 OCEANFRONT RESIDENCES

F L O O R P L A N S

WEST

R E S I D E N C E S

IIIUSE

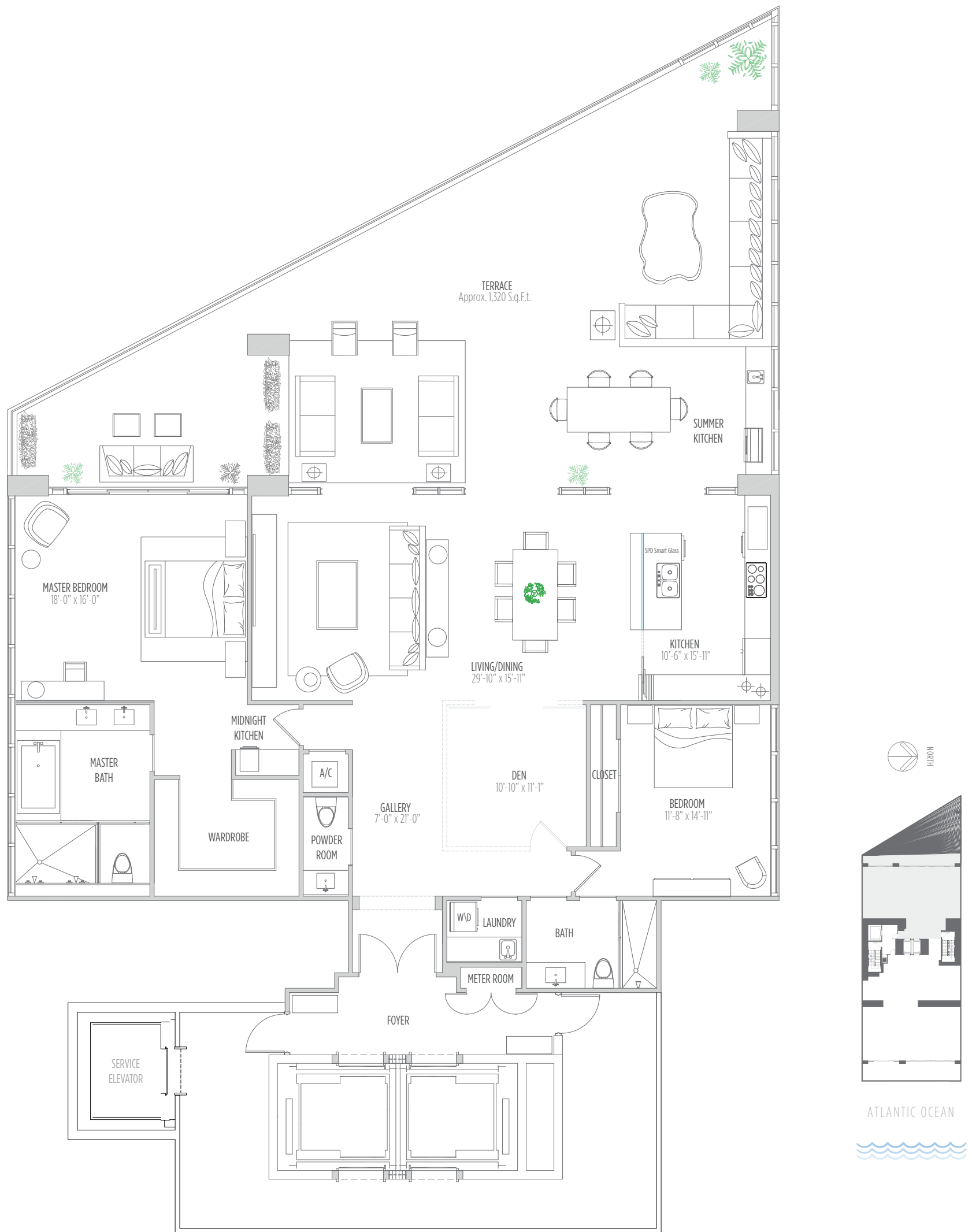
68 OCEANFRONT RESIDENCES

IIIUSE

68 OCEANFRONT RESIDENCES

RESIDENCE **4402** 2 BEDROOMS | 2.5 BATHS | DEN

AC AREA: 2,360 SQ.FT. 219 M² | **TERRACE:** 800 SQ.FT. 74 M² | **TOTAL:** 3,160 SQ.FT. 293 M²



IIIUSE

68 OCEANFRONT RESIDENCES

RESIDENCE **4202** 2 BEDROOMS | 2.5 BATHS | DEN

AC AREA: 2,360 SQ.FT. 219 M² | **TERRACE:** 760 SQ.FT. 71 M² | **TOTAL:** 3,120 SQ.FT. 290 M²

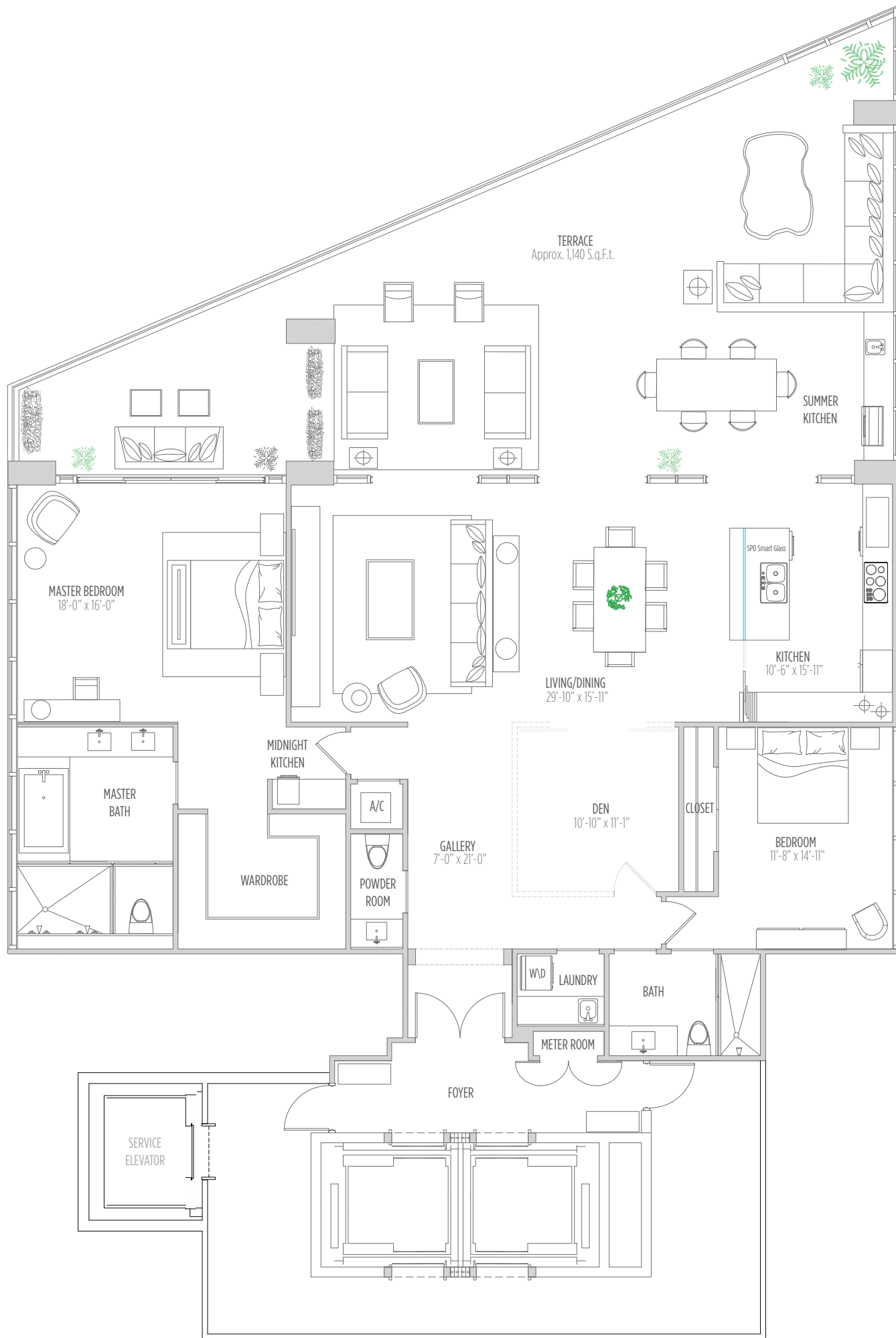


IIIUSE

68 OCEANFRONT RESIDENCES

RESIDENCE **4002** 2 BEDROOMS | 2.5 BATHS | DEN

AC AREA: 2,360 SQ.FT. 219 M² | **TERRACE:** 720 SQ.FT. 67 M² | **TOTAL:** 3,080 SQ.FT. 286 M²

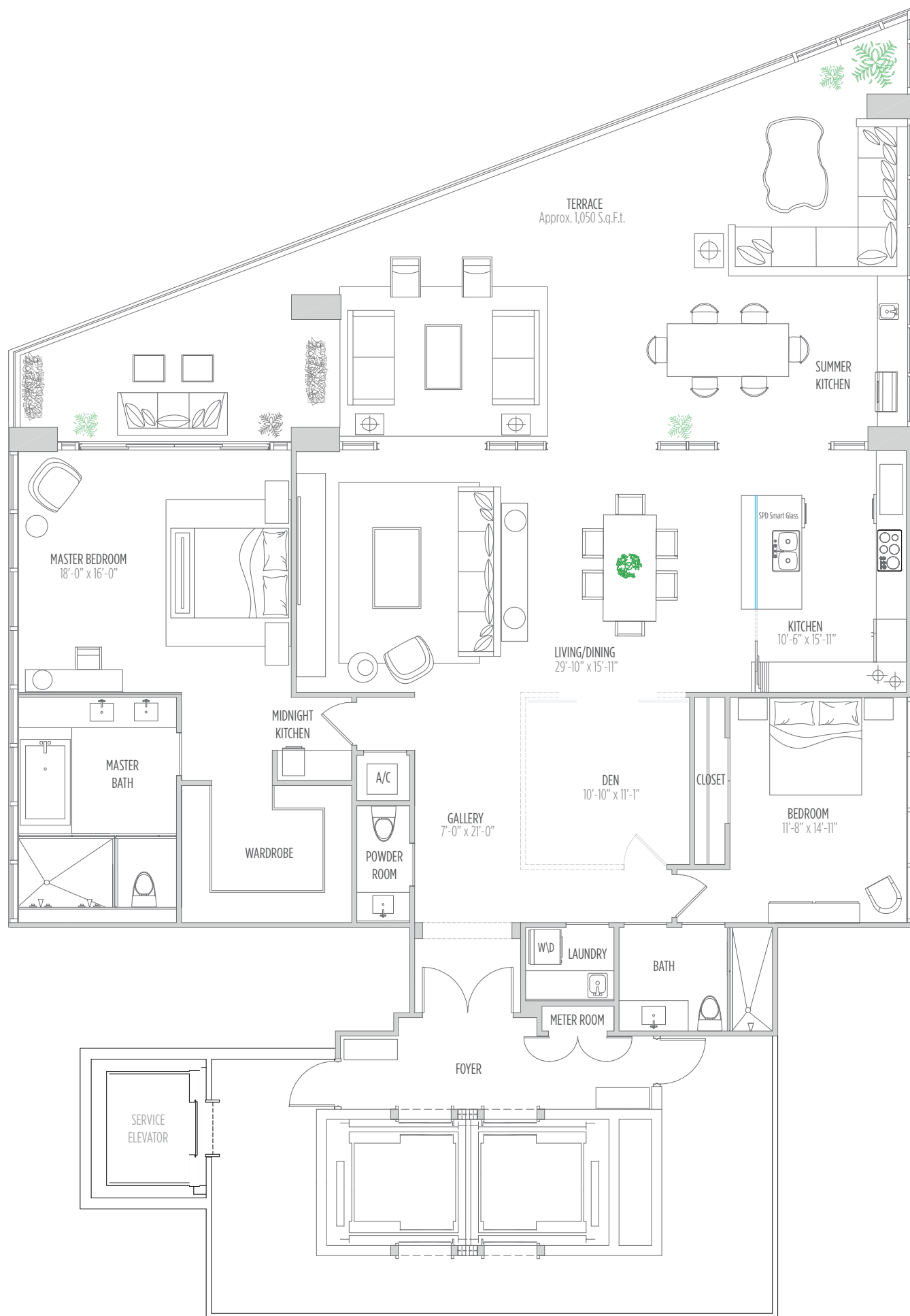


IIIUSE

68 OCEANFRONT RESIDENCES

RESIDENCE **3802** 2 BEDROOMS | 2.5 BATHS | DEN

AC AREA: 2,360 SQ.FT. 219 M² | **TERRACE:** 680 SQ.FT. 63 M² | **TOTAL:** 3,040 SQ.FT. 282 M²

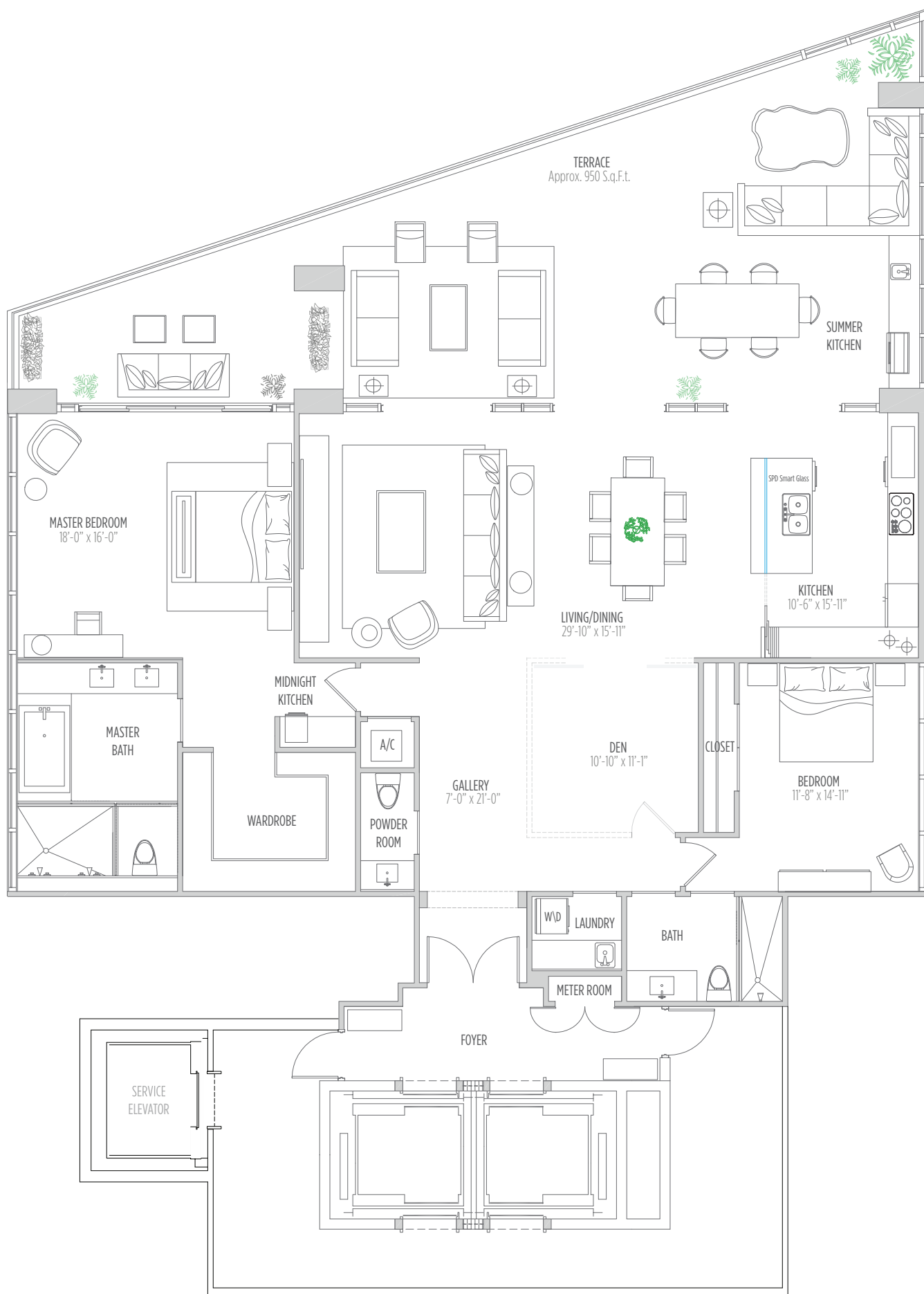


IIIUSE

68 OCEANFRONT RESIDENCES

RESIDENCE **3602** 2 BEDROOMS | 2.5 BATHS | DEN

AC AREA: 2,360 SQ.FT. 219 M² | **TERRACE:** 640 SQ.FT. 59 M² | **TOTAL:** 3,000 SQ.FT. 278 M²

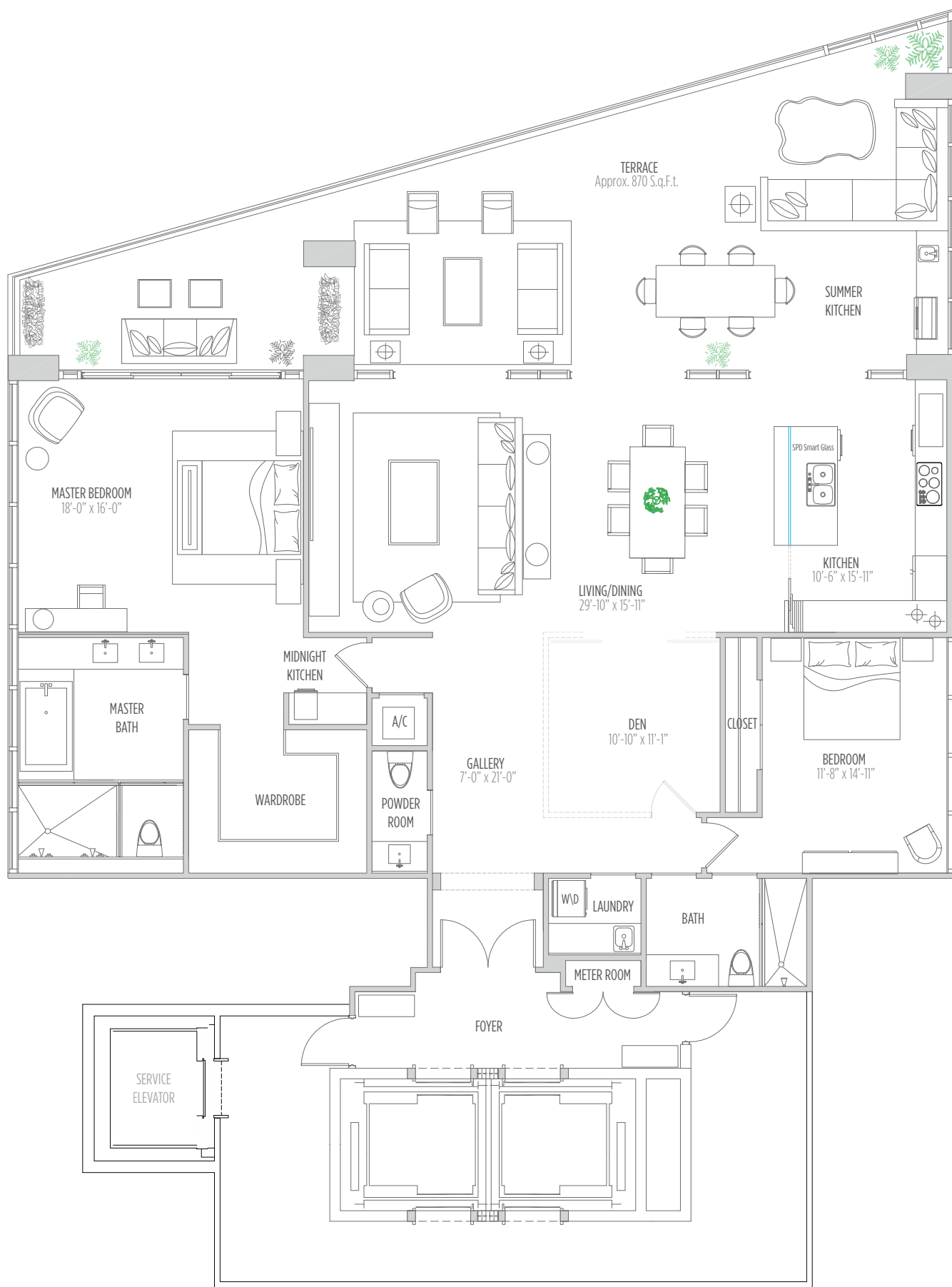


IIIUSE

68 OCEANFRONT RESIDENCES

RESIDENCE **3402** 2 BEDROOMS | 2.5 BATHS | DEN

AC AREA: 2,360 SQ.FT. 219 M² | **TERRACE:** 600 SQ.FT. 56 M² | **TOTAL:** 2,960 SQ.FT. 275 M²

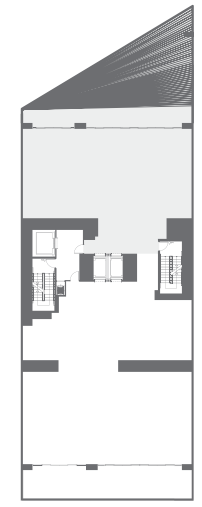
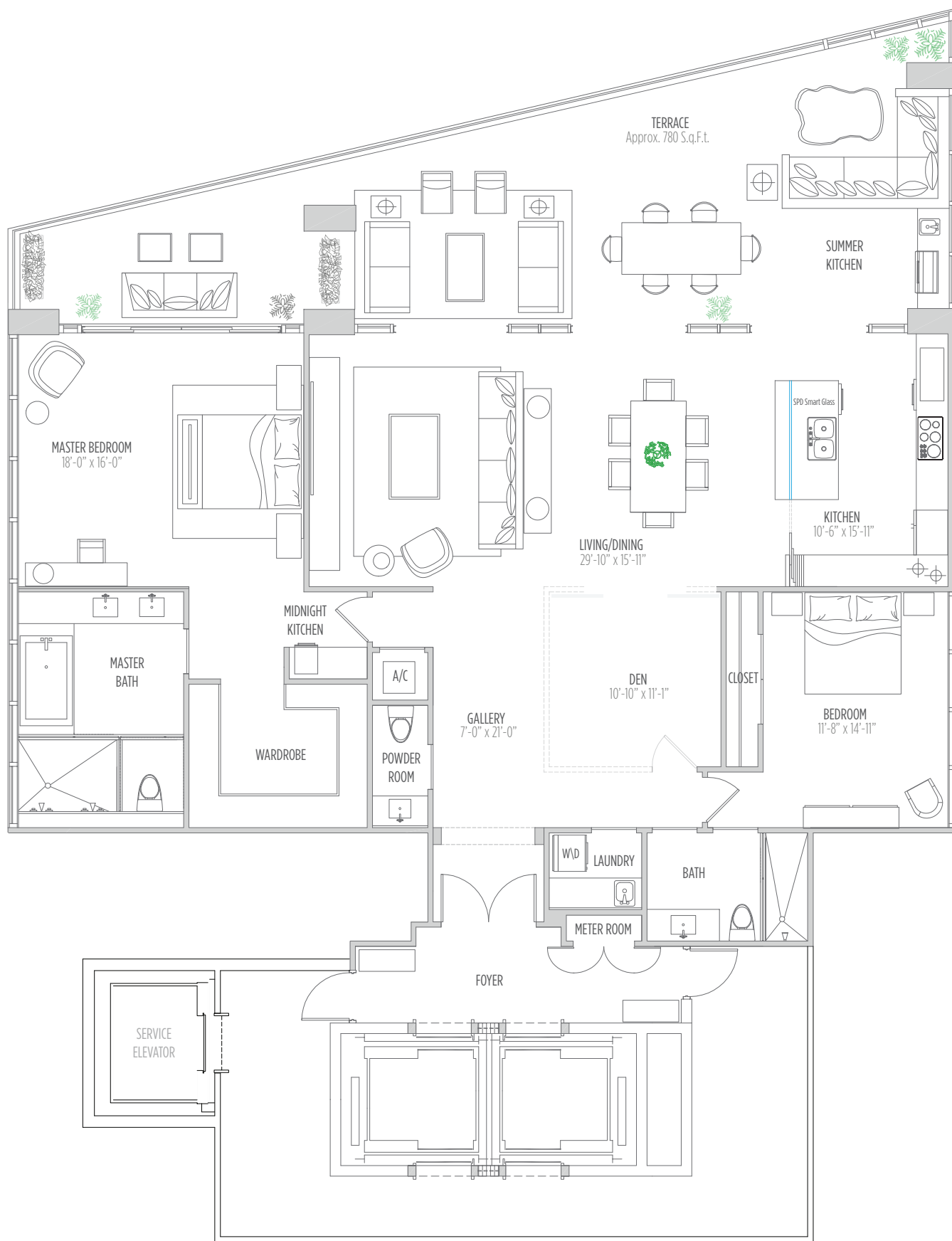


IIIUSE

68 OCEANFRONT RESIDENCES

RESIDENCE **3202** 2 BEDROOMS | 2.5 BATHS | DEN

AC AREA: 2,360 SQ.FT. 219 M² | **TERRACE:** 560 SQ.FT. 52 M² | **TOTAL:** 2,920 SQ.FT. 271 M²



ATLANTIC OCEAN



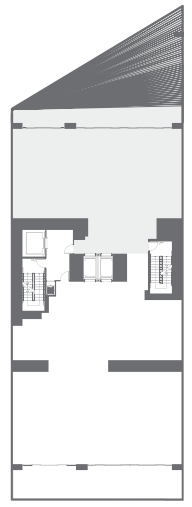
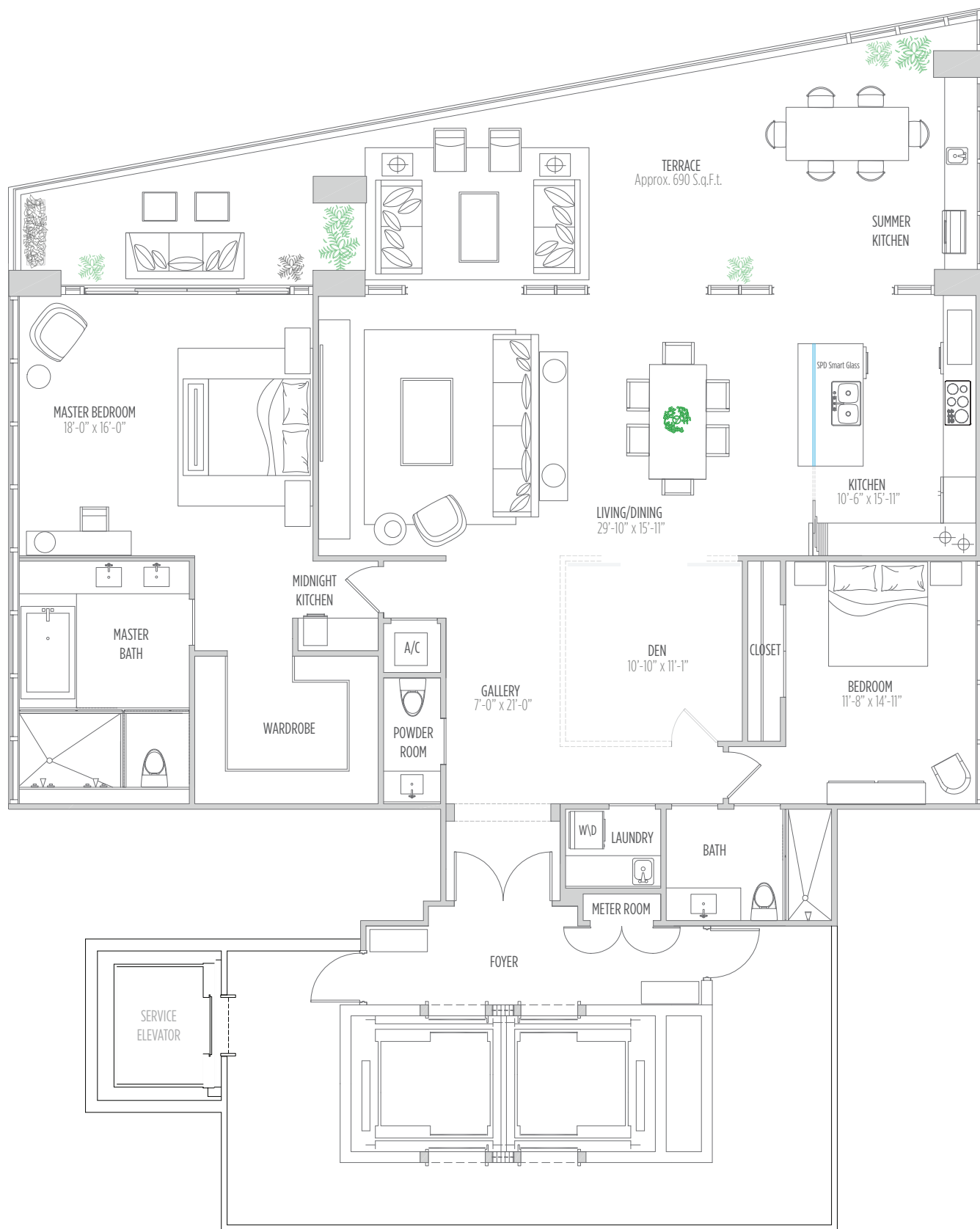
THESE DRAWINGS ARE CONCEPTUAL ONLY AND ARE FOR THE CONVENIENCE OF REFERENCE. THEY SHOULD NOT BE RELIED UPON AS REPRESENTATIONS, EXPRESS OR IMPLIED, OF THE FINAL DETAIL OF THE RESIDENCES. UNITS SHOWN ARE EXAMPLES OF UNIT TYPES AND MAY NOT DEPICT ACTUAL UNITS. STATED SQUARE FOOTAGES ARE RANGES FOR A PARTICULAR UNIT TYPE AND ARE MEASURED TO THE EXTERIOR BOUNDARIES OF THE EXTERIOR WALLS AND THE CENTERLINE OF INTERIOR DEMISING WALLS AND IN FACT VARY FROM THE AREA THAT WOULD BE DETERMINED BY USING THE DESCRIPTION AND DEFINITION OF THE "UNIT" SET FORTH IN THE DECLARATION (WHICH GENERALLY ONLY INCLUDES THE INTERIOR AIRSPACE BETWEEN THE PERIMETER WALLS AND EXCLUDES INTERIOR STRUCTURAL COMPONENTS). ALL DEPICTIONS OF APPLIANCES, PLUMBING FIXTURES, EQUIPMENT, COUNTERS, SOFFITS, FLOOR COVERINGS AND OTHER MATTERS OF DETAIL ARE CONCEPTUAL ONLY AND ARE NOT NECESSARILY INCLUDED IN EACH UNIT. CONSULT YOUR AGREEMENT AND THE PROSPECTUS FOR THE ITEMS INCLUDED WITH THE UNIT. DIMENSIONS AND SQUARE FOOTAGE ARE APPROXIMATE, WILL VARY WITH SPECIFIC UNIT TYPE, AND MAY VARY WITH ACTUAL CONSTRUCTION. ADDITIONALLY, MEASUREMENTS OF ROOMS SET FORTH ON ANY FLOOR PLAN ARE NOMINAL AND GENERALLY TAKEN AT THE GREATEST POINTS OF EACH GIVEN ROOM (AS IF THE ROOM WERE A PERFECT RECTANGLE), WITHOUT REGARD FOR ANY CUTOUTS. UNIT ORIENTATION AND WINDOWS (INCLUDING NUMBER, SIZE, ORIENTATION AND AWNINGS), BALCONY/LANAI (INCLUDING CONFIGURATION, SIZE AND RAILING/BALUSTRADE), STRUCTURE AND MECHANICAL CHASES MAY VARY. THE DEVELOPER EXPRESSLY RESERVES THE RIGHT TO MAKE MODIFICATIONS, REVISIONS, AND CHANGES IT DEEMS DESIRABLE IN ITS SOLE AND ABSOLUTE DISCRETION AND WITHOUT NOTICE.

IIIUSE

68 OCEANFRONT RESIDENCES

RESIDENCE **3002** 2 BEDROOMS | 2.5 BATHS | DEN

AC AREA: 2,360 SQ.FT. 219 M² | **TERRACE:** 520 SQ.FT. 48 M² | **TOTAL:** 2,880 SQ.FT. 267 M²



ATLANTIC OCEAN

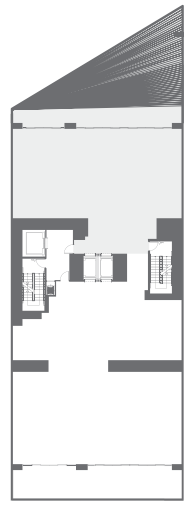
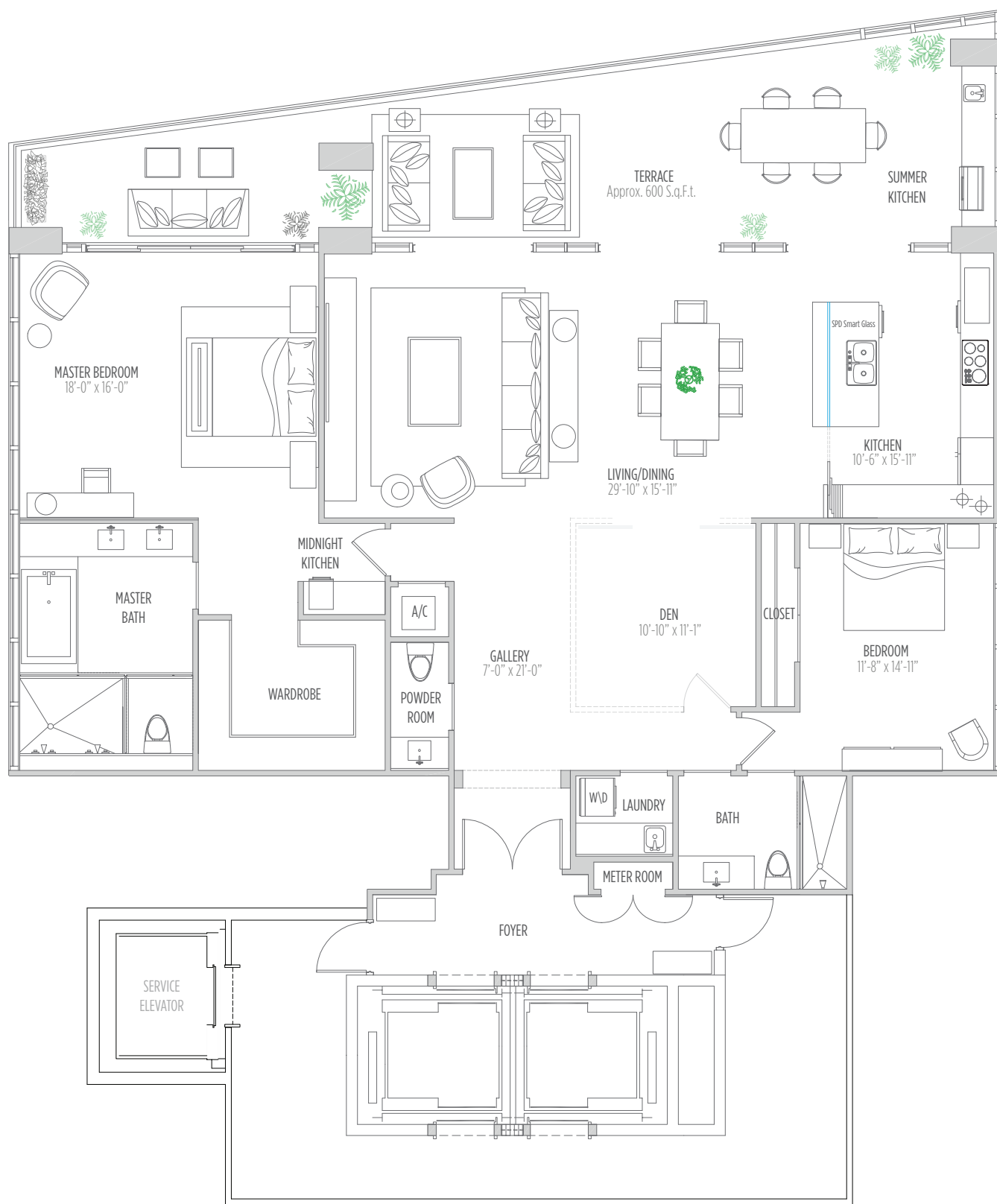


IIIUSE

68 OCEANFRONT RESIDENCES

RESIDENCE **2802** 2 BEDROOMS | 2.5 BATHS | DEN

AC AREA: 2,360 SQ.FT. 219 M² | **TERRACE:** 480 SQ.FT. 46 M² | **TOTAL:** 2,840 SQ.FT. 265 M²



ATLANTIC OCEAN



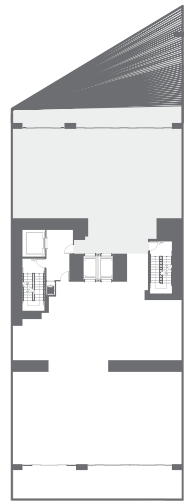
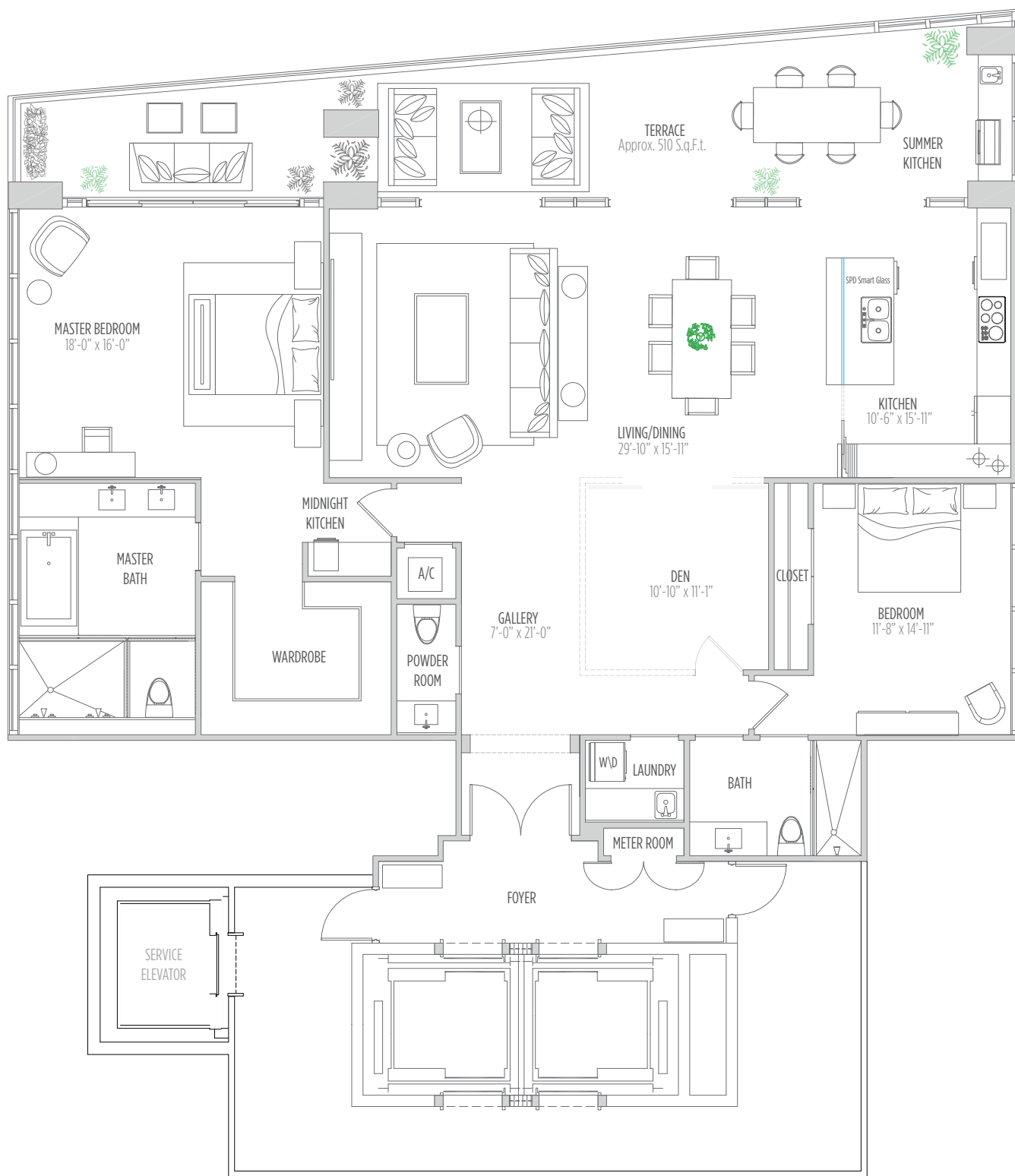
THESE DRAWINGS ARE CONCEPTUAL ONLY AND ARE FOR THE CONVENIENCE OF REFERENCE. THEY SHOULD NOT BE RELIED UPON AS REPRESENTATIONS, EXPRESS OR IMPLIED, OF THE FINAL DETAIL OF THE RESIDENCES. UNITS SHOWN ARE EXAMPLES OF UNIT TYPES AND MAY NOT DEPICT ACTUAL UNITS. STATED SQUARE FOOTAGES ARE RANGES FOR A PARTICULAR UNIT TYPE AND ARE MEASURED TO THE EXTERIOR BOUNDARIES OF THE EXTERIOR WALLS AND THE CENTERLINE OF INTERIOR DEMISING WALLS AND IN FACT VARY FROM THE AREA THAT WOULD BE DETERMINED BY USING THE DESCRIPTION AND DEFINITION OF THE "UNIT" SET FORTH IN THE DECLARATION (WHICH GENERALLY ONLY INCLUDES THE INTERIOR AIRSPACE BETWEEN THE PERIMETER WALLS AND EXCLUDES INTERIOR STRUCTURAL COMPONENTS). ALL DEPICTIONS OF APPLIANCES, PLUMBING FIXTURES, EQUIPMENT, COUNTERS, SOFFITS, FLOOR COVERINGS AND OTHER MATTERS OF DETAIL ARE CONCEPTUAL ONLY AND ARE NOT NECESSARILY INCLUDED IN EACH UNIT. CONSULT YOUR AGREEMENT AND THE PROSPECTUS FOR THE ITEMS INCLUDED WITH THE UNIT. DIMENSIONS AND SQUARE FOOTAGE ARE APPROXIMATE, WILL VARY WITH SPECIFIC UNIT TYPE, AND MAY VARY WITH ACTUAL CONSTRUCTION. ADDITIONALLY, MEASUREMENTS OF ROOMS SET FORTH ON ANY FLOOR PLAN ARE NOMINAL AND GENERALLY TAKEN AT THE GREATEST POINTS OF EACH GIVEN ROOM (AS IF THE ROOM WERE A PERFECT RECTANGLE), WITHOUT REGARD FOR ANY CUTOUTS. UNIT ORIENTATION AND WINDOWS (INCLUDING NUMBER, SIZE, ORIENTATION AND AWNINGS), BALCONY/LANAI (INCLUDING CONFIGURATION, SIZE AND RAILING/BALUSTRADE), STRUCTURE AND MECHANICAL CHASES MAY VARY. THE DEVELOPER EXPRESSLY RESERVES THE RIGHT TO MAKE MODIFICATIONS, REVISIONS, AND CHANGES IT DEEMS DESIRABLE IN ITS SOLE AND ABSOLUTE DISCRETION AND WITHOUT NOTICE.

IIIUSE

68 OCEANFRONT RESIDENCES

RESIDENCE **2602** 2 BEDROOMS | 2.5 BATHS | DEN

AC AREA: 2,360 SQ.FT. 219 M² | **TERRACE:** 440 SQ.FT. 41 M² | **TOTAL:** 2,800 SQ.FT. 260 M²



ATLANTIC OCEAN

