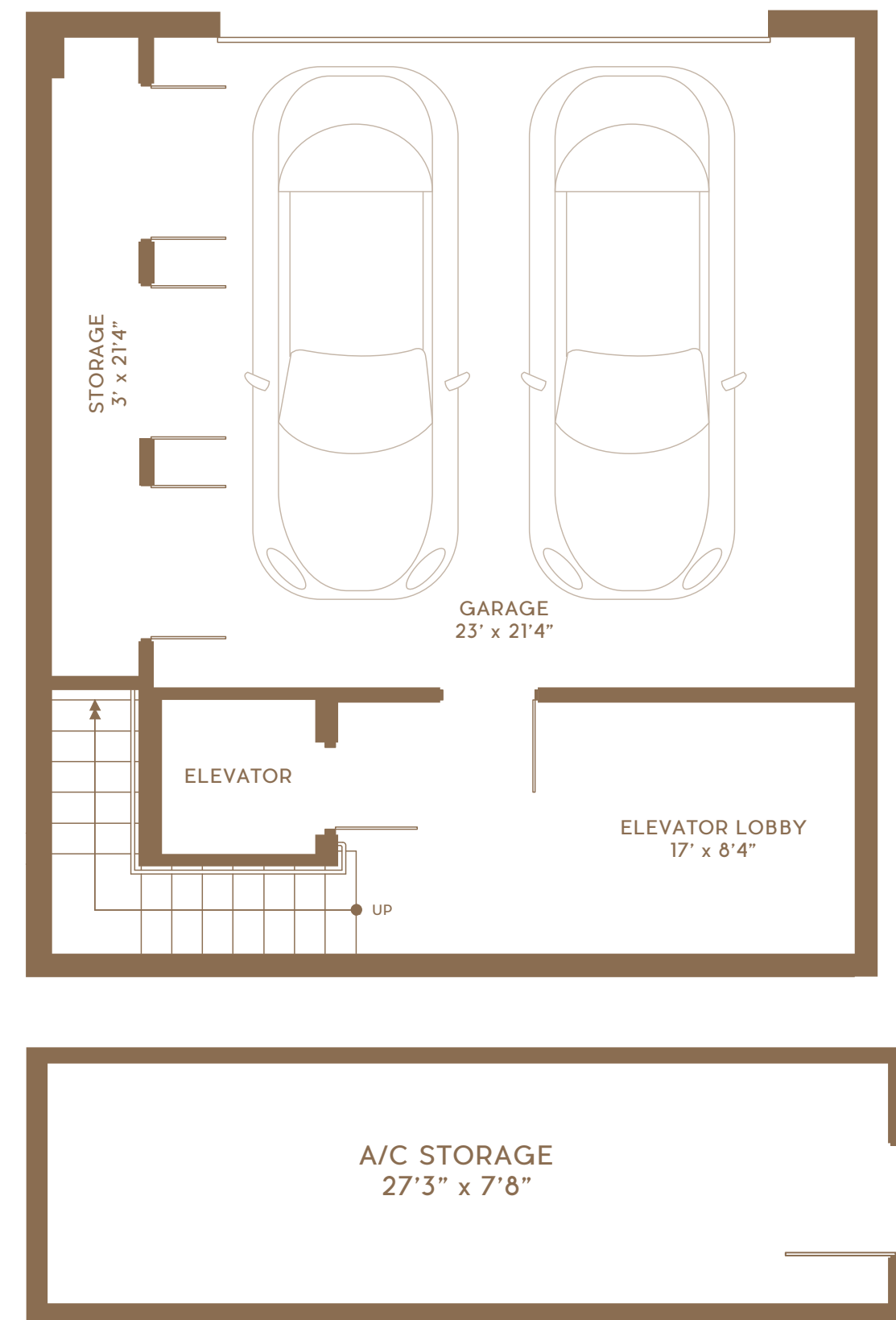


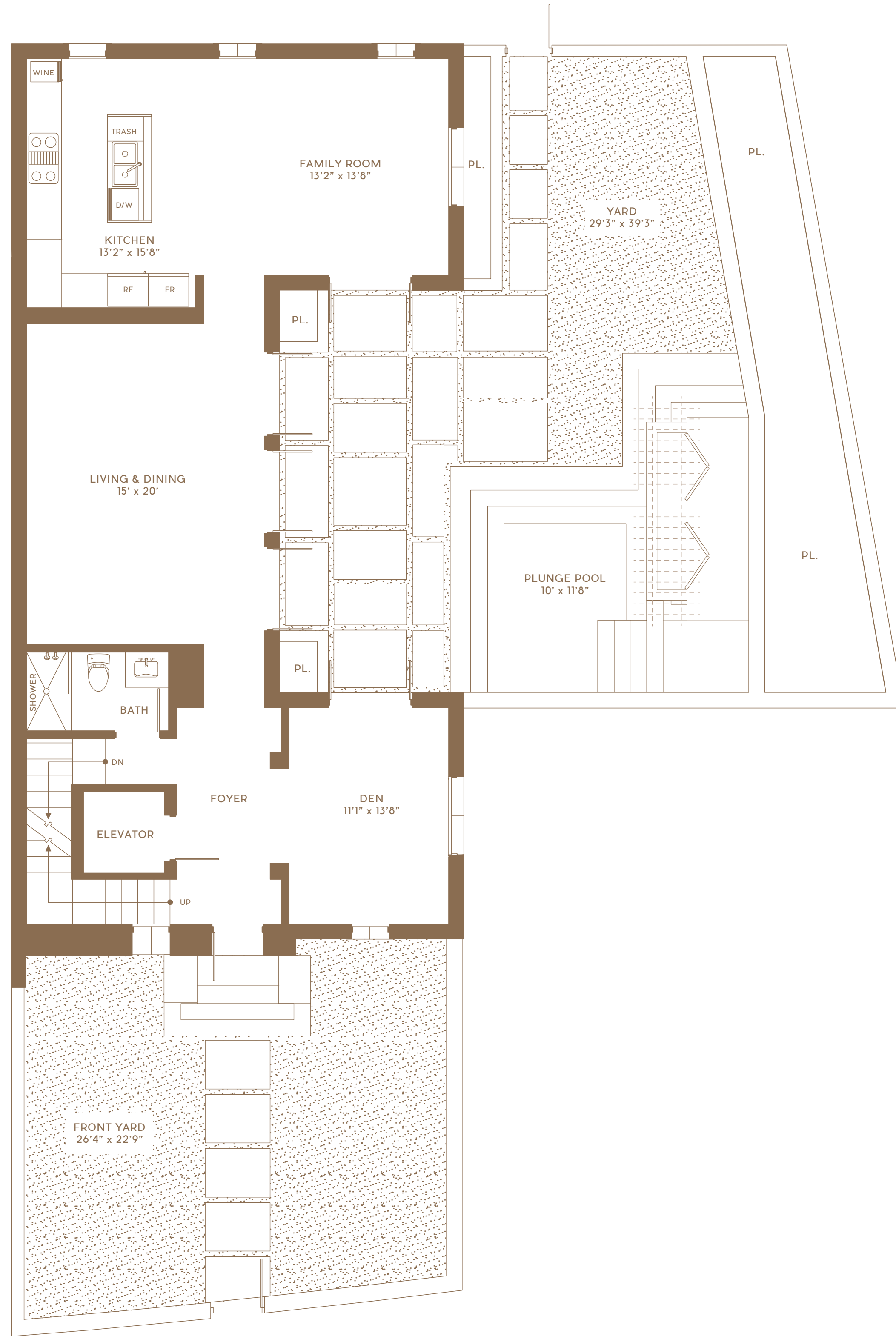
VILLA A NORTH

4 BEDROOMS • 4 BATHS • DEN

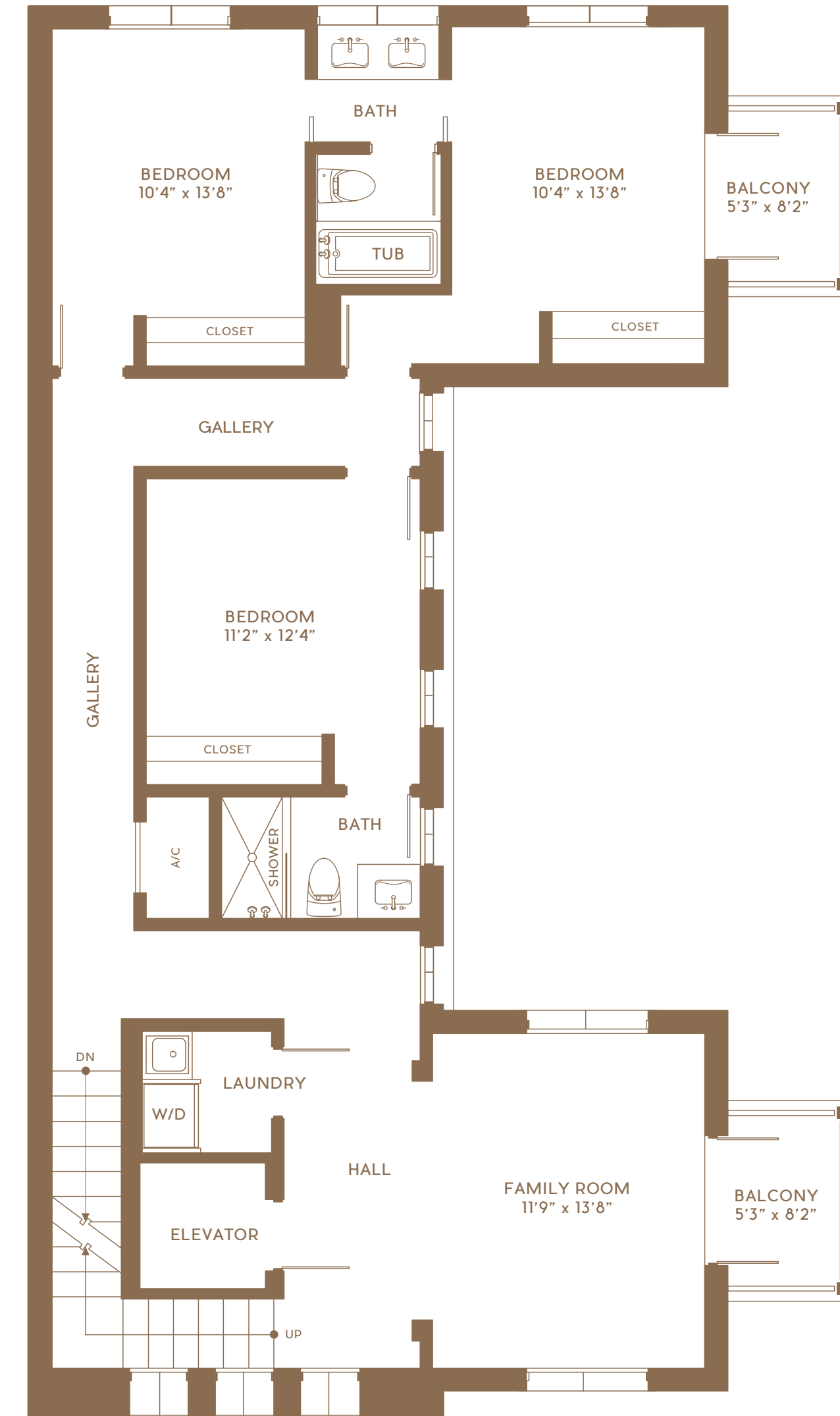
Interior Area	3,642 Sq Ft
Climate Controlled Storage	233 Sq Ft
TOTAL A/C	3,875 Sq Ft
Terrace/Balcony	510 Sq Ft
Front and Back Yard Area	1,750 Sq Ft
Garage	491 Sq Ft
Garage Storage	64 Sq Ft
TOTAL NON A/C	2,815 Sq Ft
GRAND TOTAL	6,690 Sq Ft



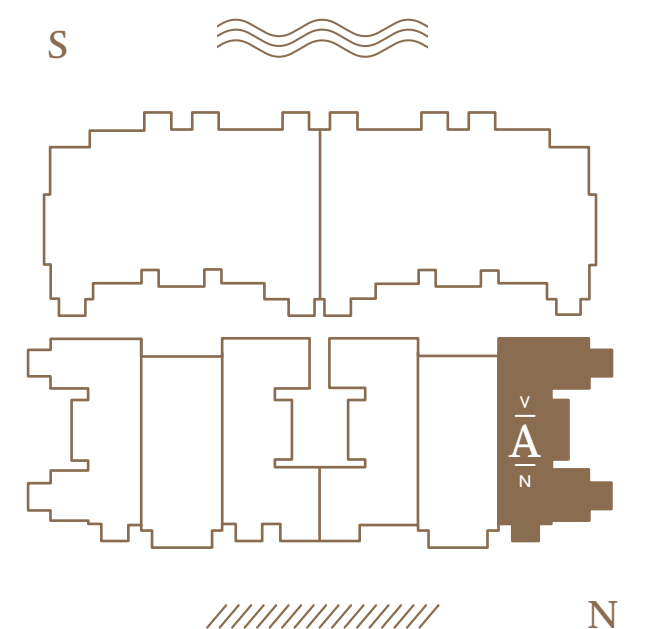
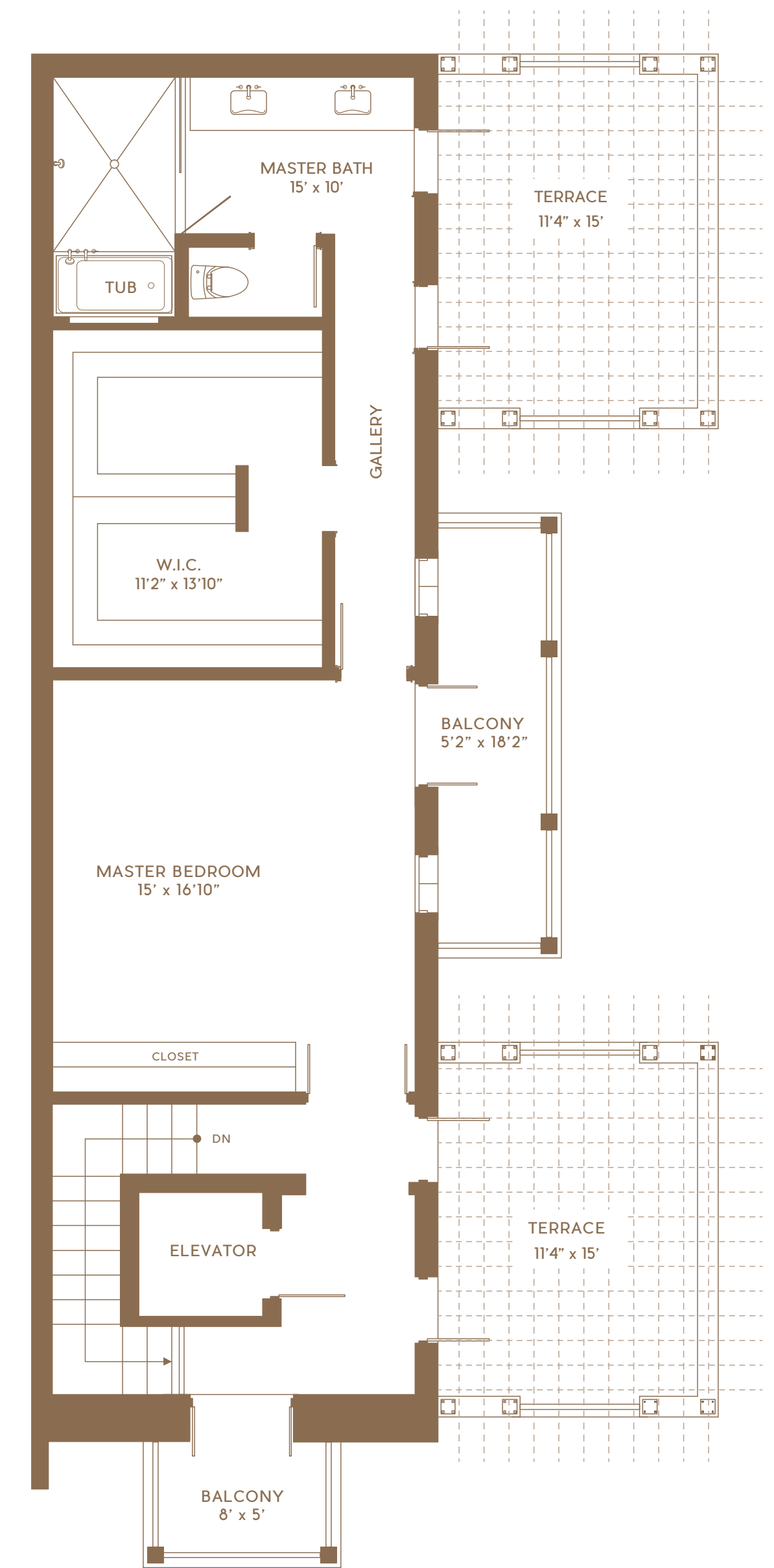
1st Floor



2nd Floor



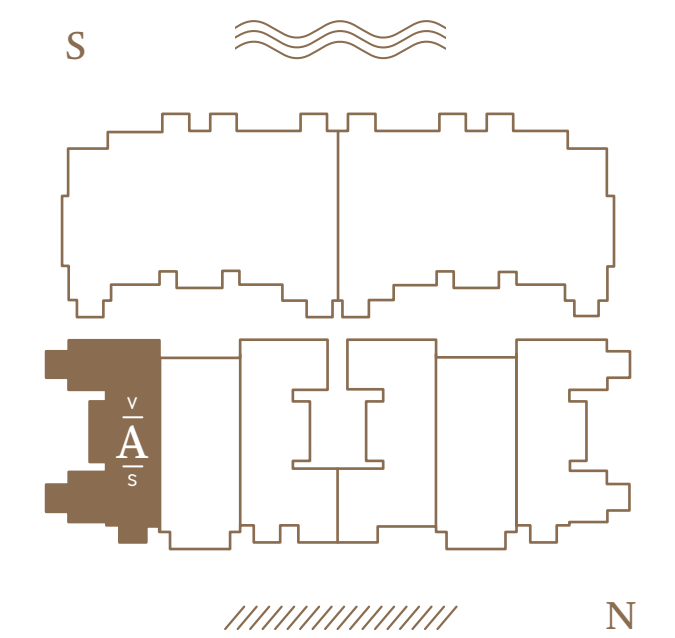
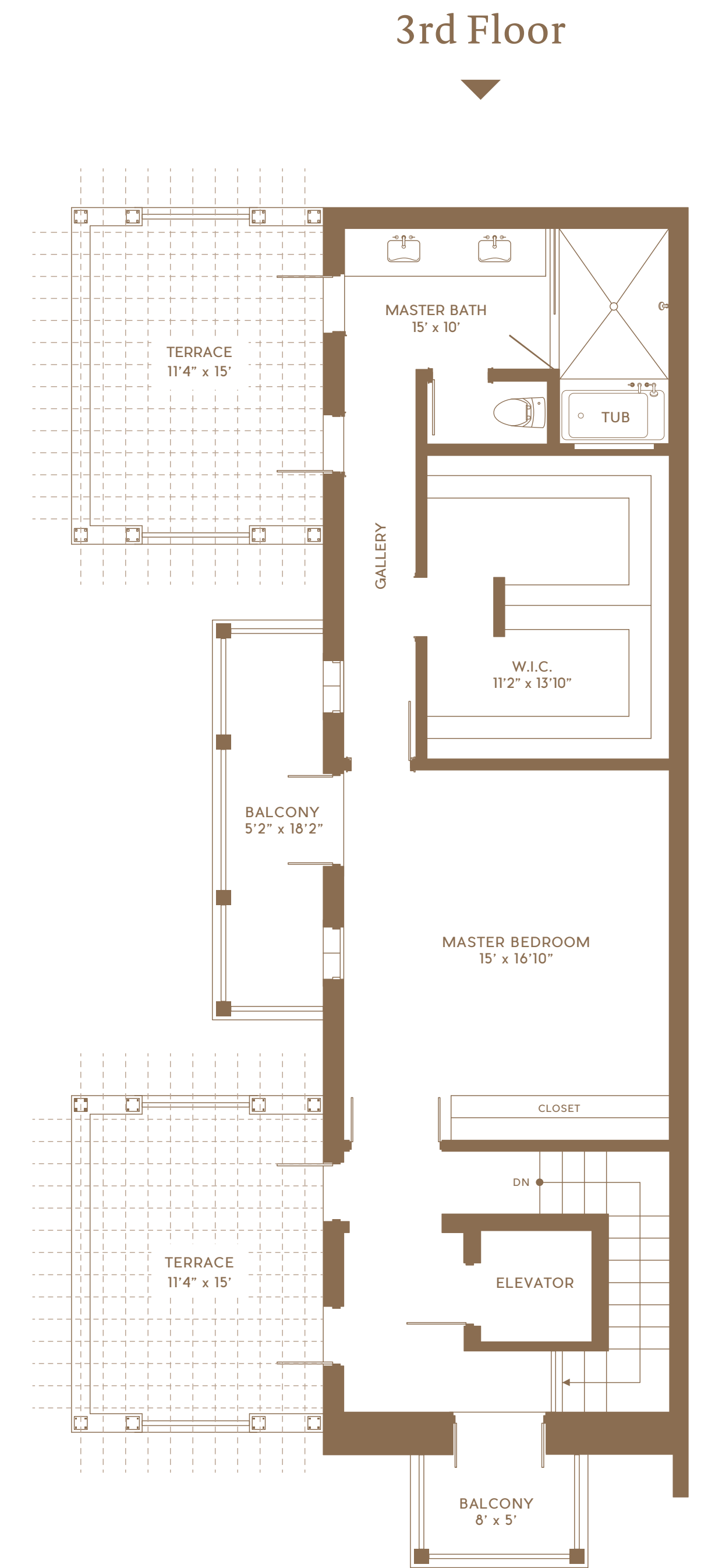
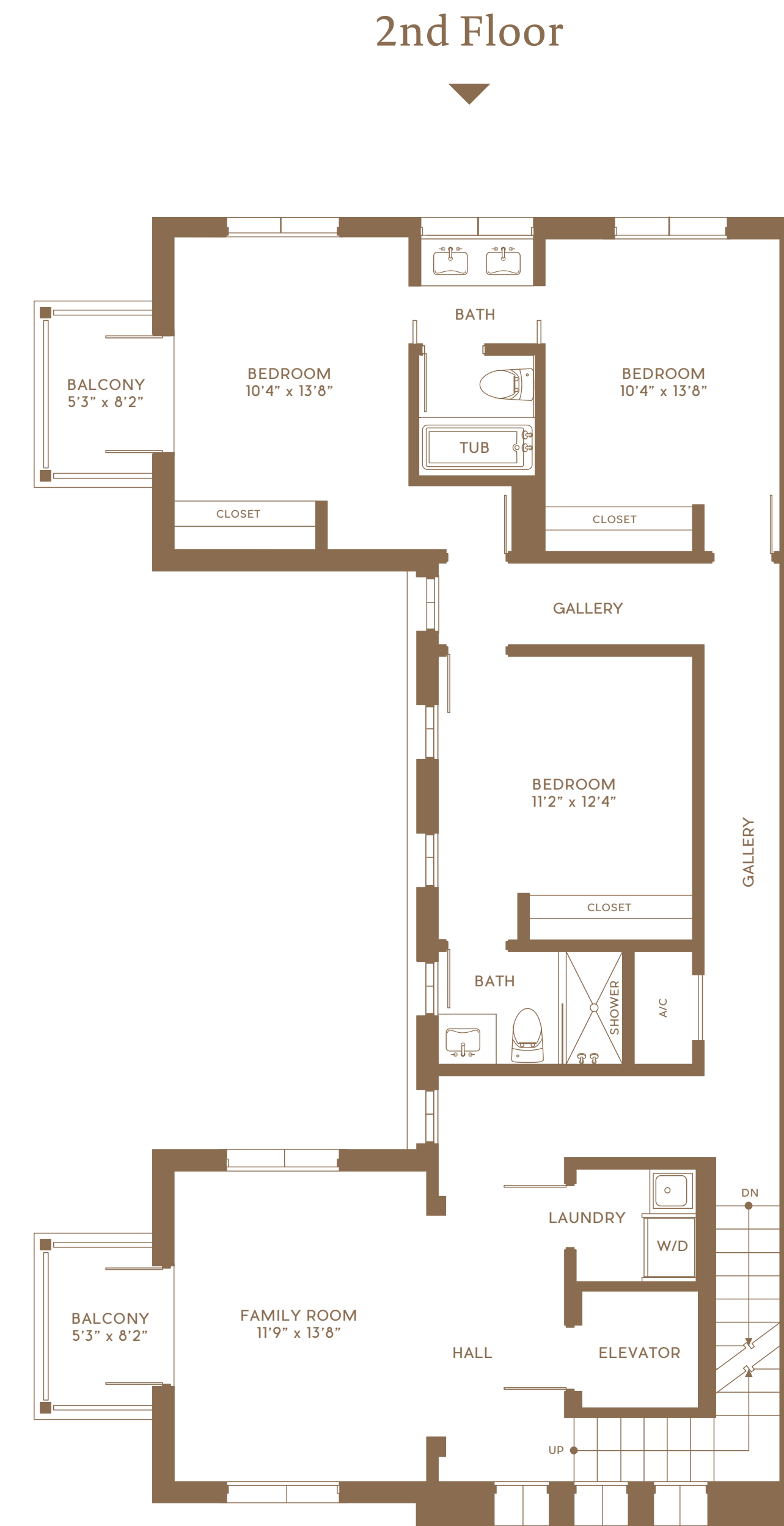
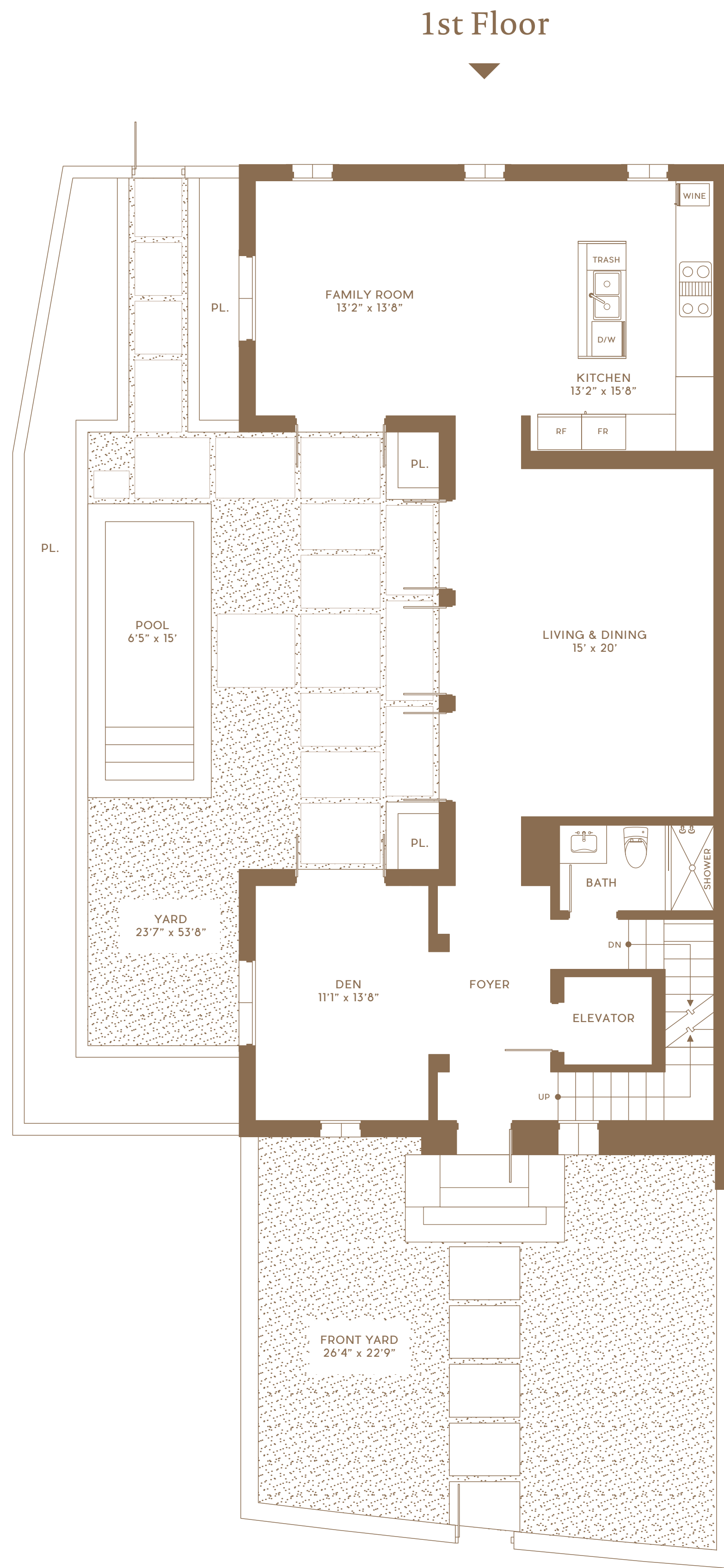
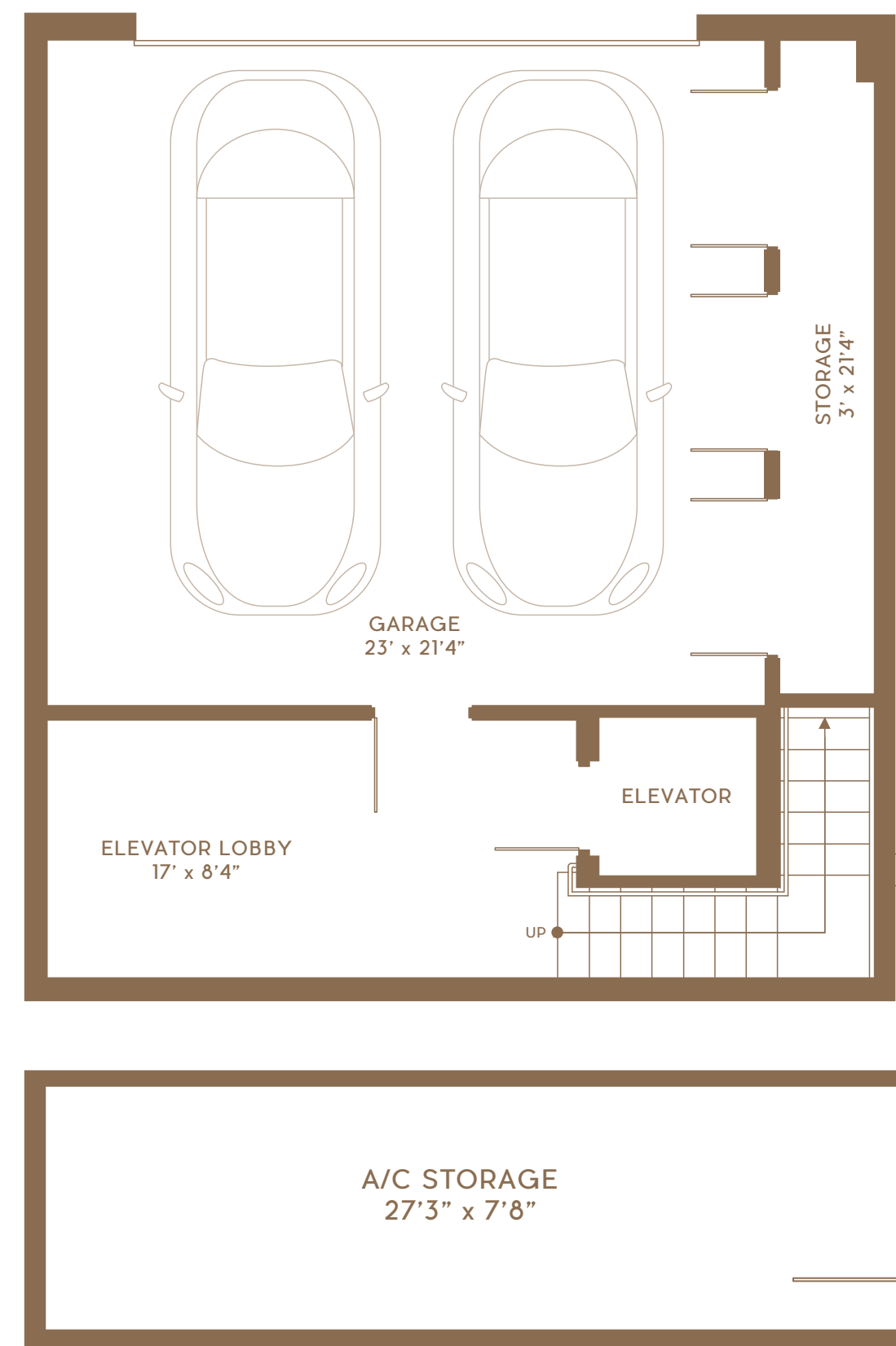
3rd Floor



VILLA A SOUTH

4 BEDROOMS • 4 BATHS • DEN

Interior Area	3,642 Sq Ft
Climate Controlled Storage	233 Sq Ft
TOTAL A/C	3,875 Sq Ft
Terrace/Balcony	510 Sq Ft
Front and Back Yard Area	1,486 Sq Ft
Garage	491 Sq Ft
Garage Storage	64 Sq Ft
TOTAL NON A/C	2,551 Sq Ft
GRAND TOTAL	6,426 Sq Ft

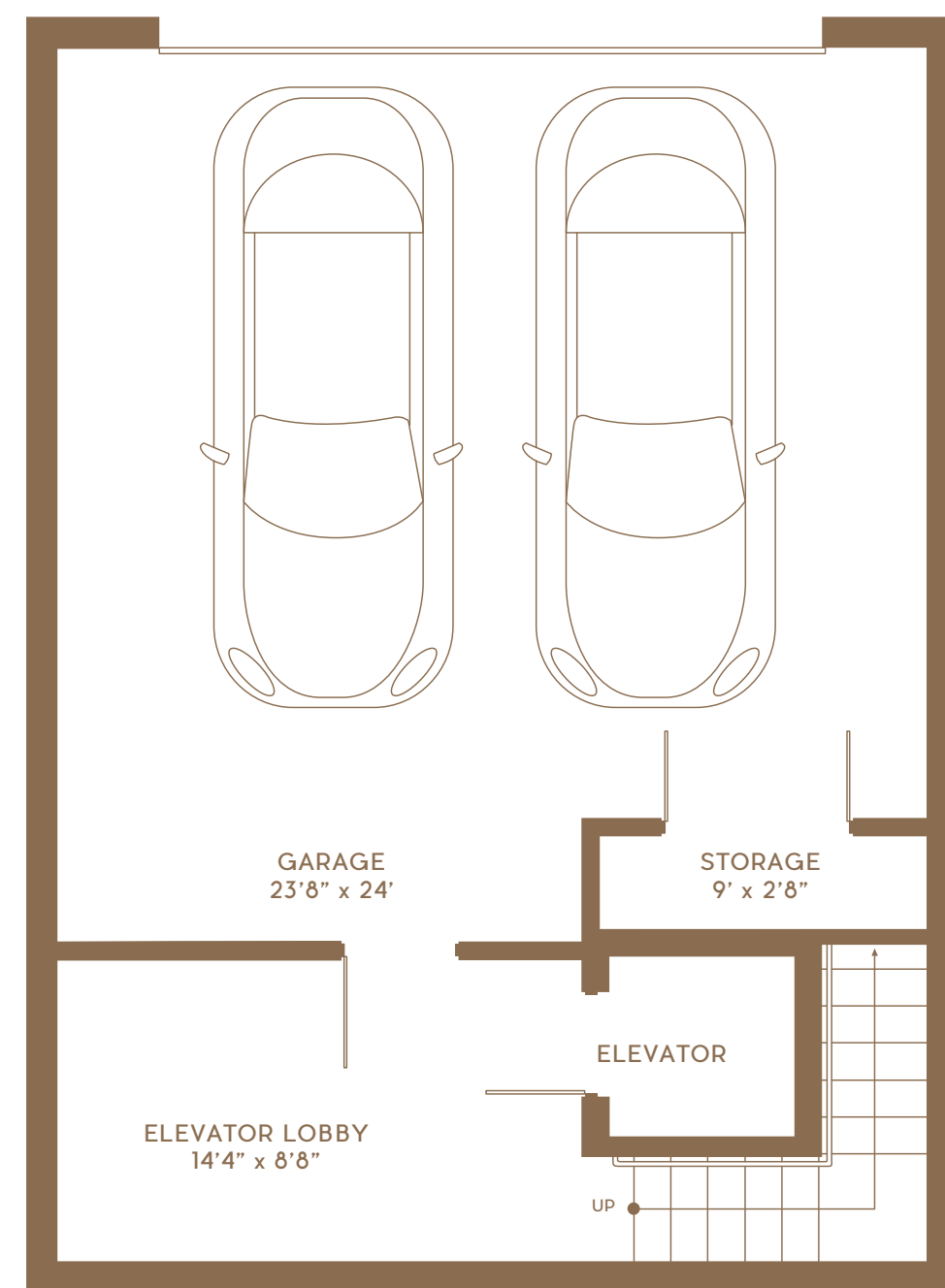


Stated square footages and dimensions of units are based on measurements to the exterior boundaries of the exterior walls and the centerline of interior demising walls between units and will vary from the square footages and dimensions of the unit that would be determined by using the description and definition of the "Unit" set forth in the Declaration (which generally only includes the interior airspace between the perimeter walls and excludes interior structural components and other common elements). This method of measurement is generally used in sales and marketing materials and is provided to allow a prospective buyer to compare the Units with units in other condominium projects that utilize the same method. For your reference, the square footage of the Unit, determined in accordance with the definition of the "Unit" set forth in the Declaration, is - or - 3,155 sq. ft. for unit type Villa A South. A/C Storage areas, terraces, patios and balconies are not part of the "Unit". Measurements and dimensions of rooms set forth on this floor plan are generally taken at the farthest points of each given room (as if the room were a perfect rectangle), without regard for any cutouts, soffits or other variations. Accordingly, the square footage of the actual room will typically be smaller than the product obtained by multiplying the stated length times width. All square footages, dimensions and measurements are estimates which are based on preliminary plans and will vary with actual construction. All floor plans, specifications and other development plans are proposed and conceptual only, and are subject to change and will not necessarily accurately reflect the final plans and specifications.

VILLA B NORTH

4 BEDROOMS • 5 BATHS • DEN

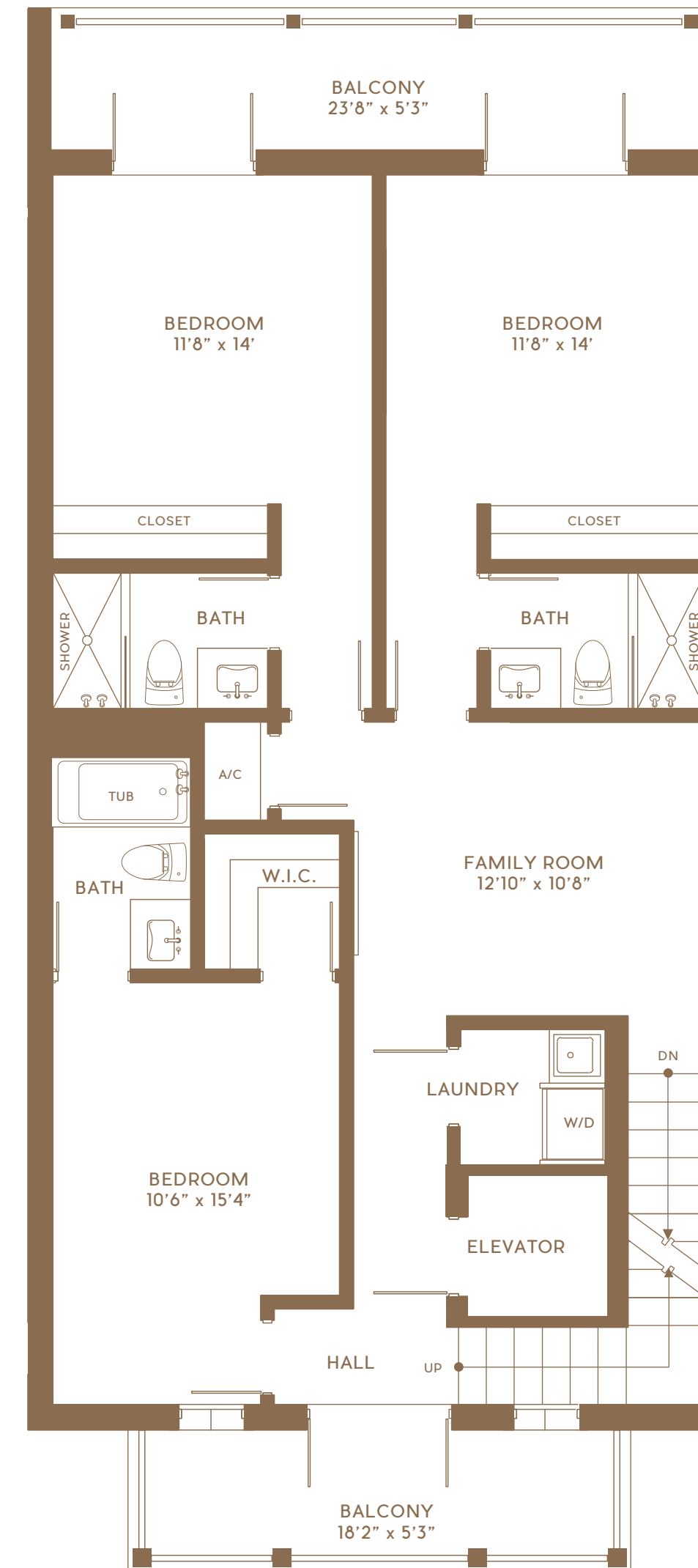
Interior Area	3,260 Sq Ft
Climate Controlled Storage	157 Sq Ft
TOTAL A/C	3,417 Sq Ft
Terrace/Balcony	606 Sq Ft
Front and Back Yard Area	985 Sq Ft
Garage	568 Sq Ft
Garage Storage	24 Sq Ft
TOTAL NON A/C	2,183 Sq Ft
GRAND TOTAL	5,600 Sq Ft



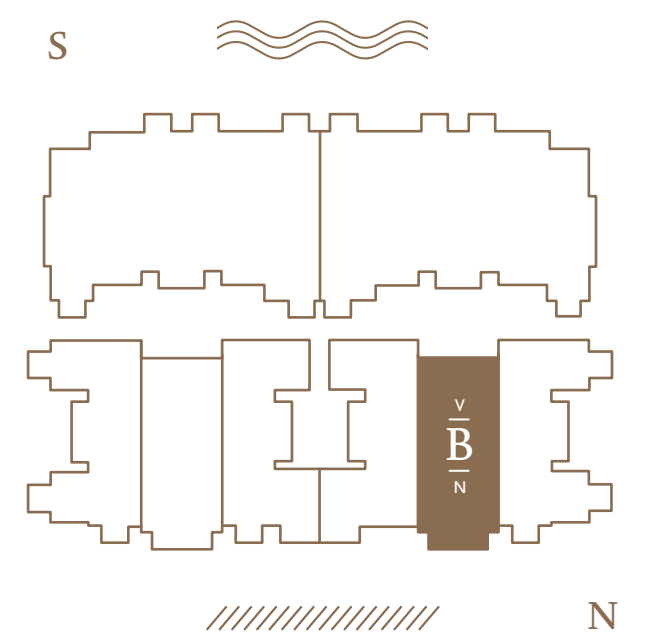
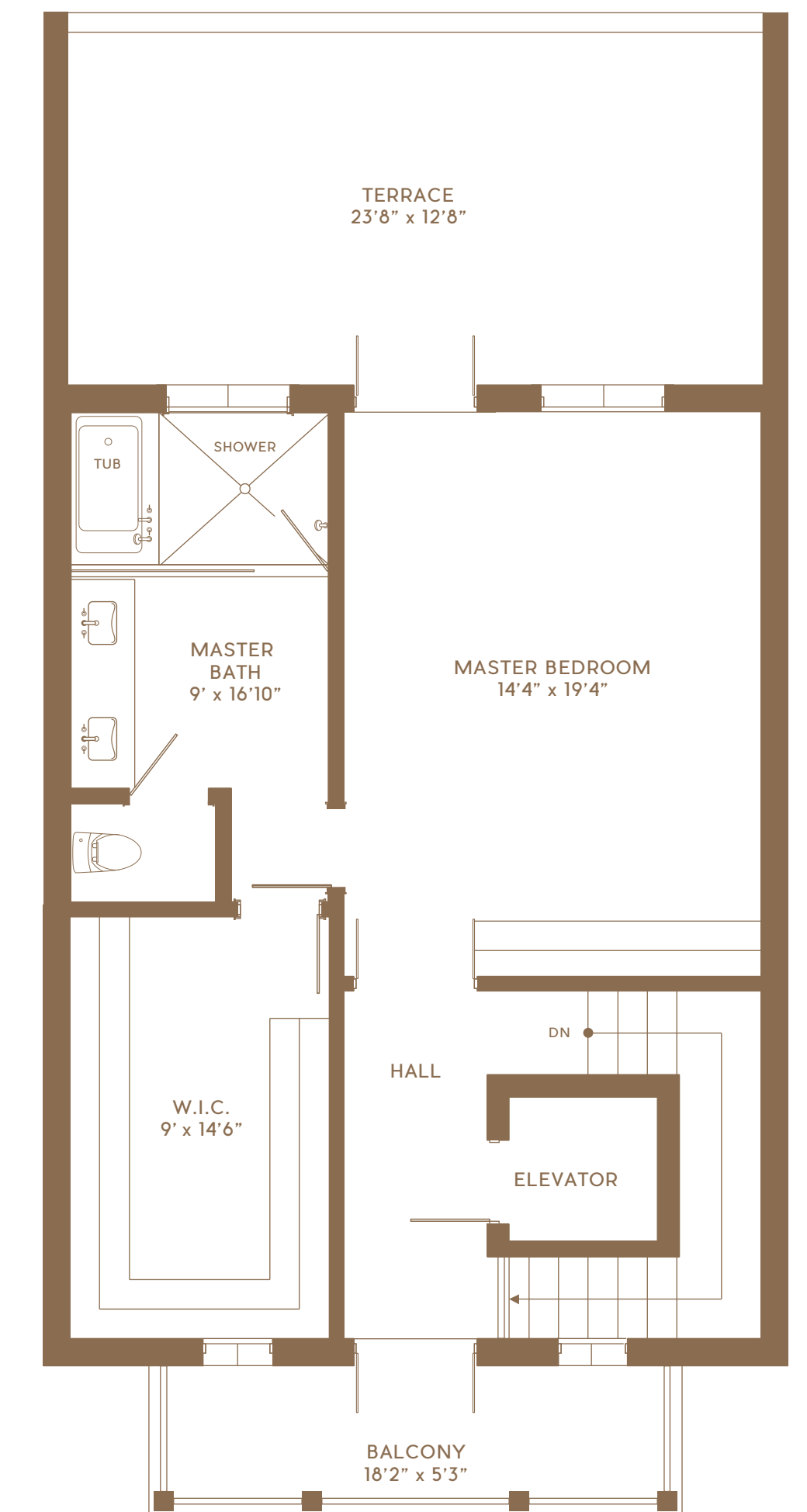
1st Floor



2nd Floor



3rd Floor



GABLES WATERWAY

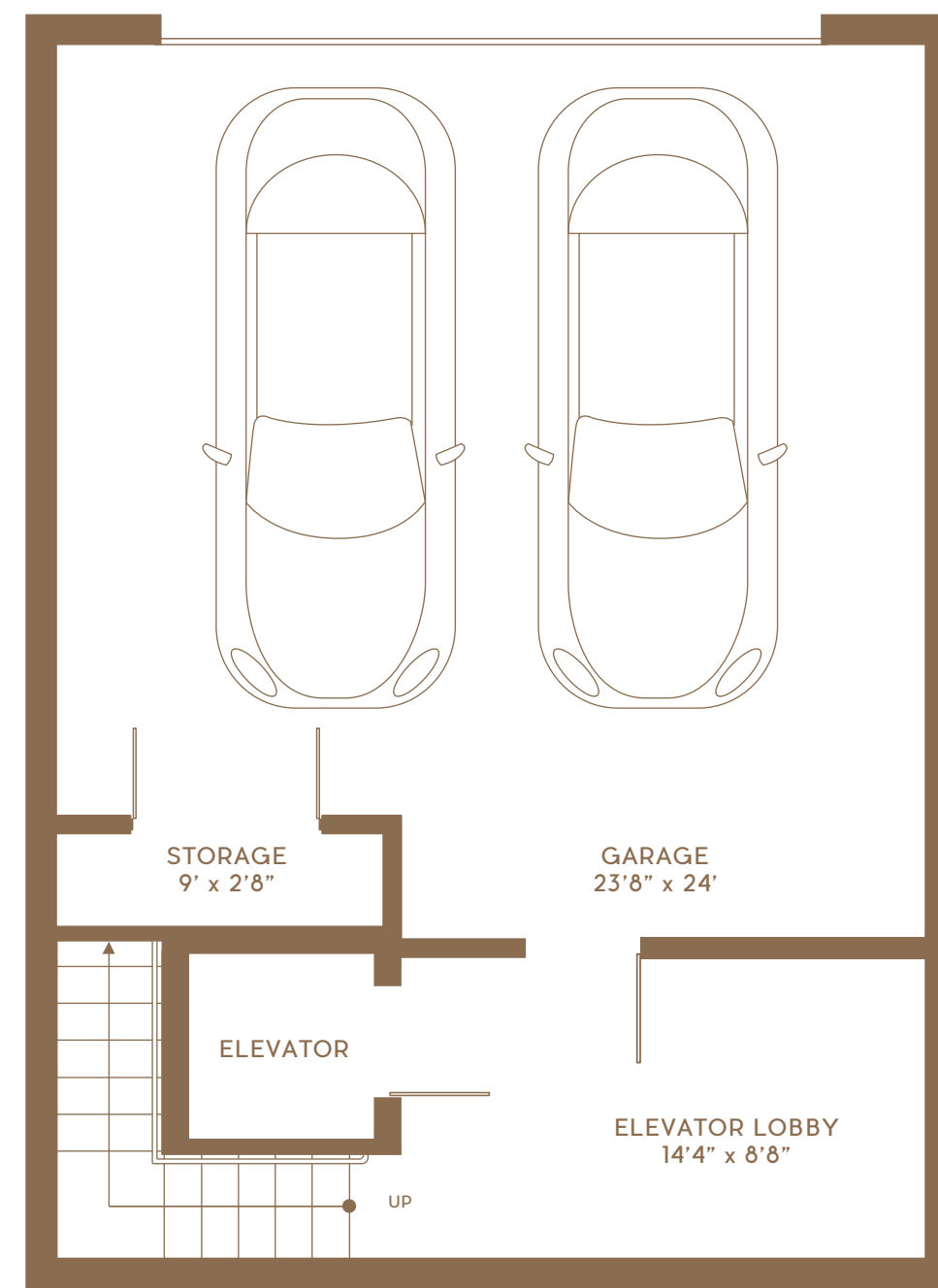


Stated square footages and dimensions of units are based on measurements to the exterior boundaries of the exterior walls and the centerline of interior demising walls between units and will vary from the square footages and dimensions of the unit that would be determined by using the description and definition of the "Unit" set forth in the Declaration (which generally only includes the interior airspace between the perimeter walls and excludes interior structural components and other common elements). This method of measurement is generally used in sales and marketing materials and is provided to allow a prospective buyer to compare the Units with units in other condominium projects that utilize the same method. For your reference, the square footage of the Unit, determined in accordance with the definition of the "Unit" set forth in the Declaration, is - or - 2,982 sq. ft. for unit type Villa B North. A/C Storage areas, terraces, patios and balconies are not part of the "Unit". Measurements and dimensions of rooms set forth on this floor plan are generally taken at the farthest points of each given room (as if the room were a perfect rectangle), without regard for any cutouts, soffits or other variations. Accordingly, the square footage of the actual room will typically be smaller than the product obtained by multiplying the stated length times width. All square footages, dimensions and measurements are estimates which are based on preliminary plans and will vary with actual construction. All floor plans, specifications and other development plans are proposed and conceptual only, and are subject to change and will not necessarily accurately reflect the final plans and specifications.

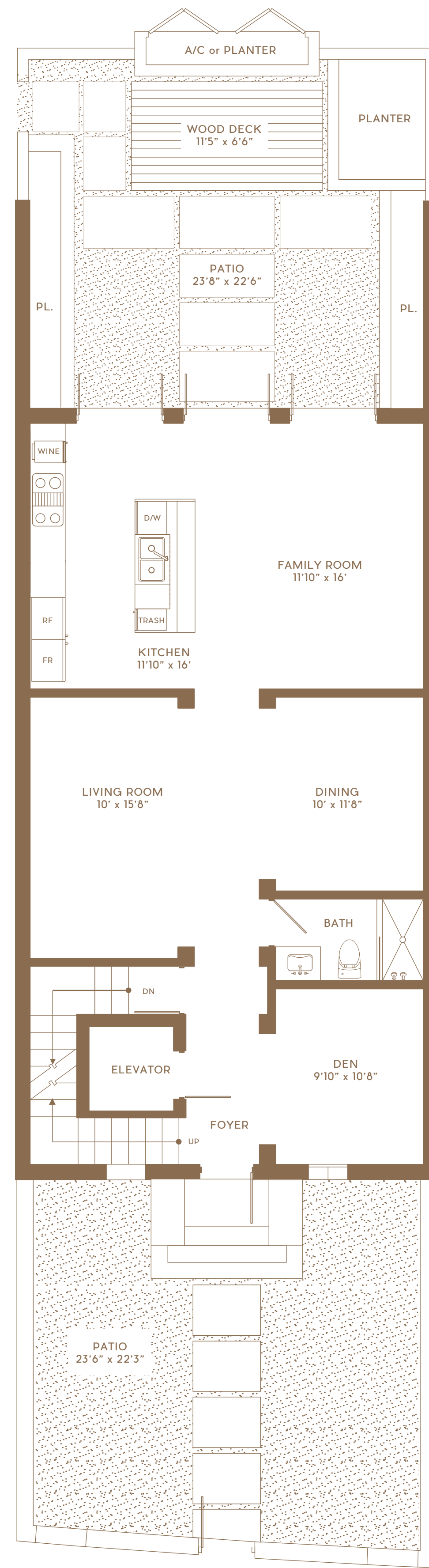
VILLA B SOUTH

4 BEDROOMS • 5 BATHS • DEN

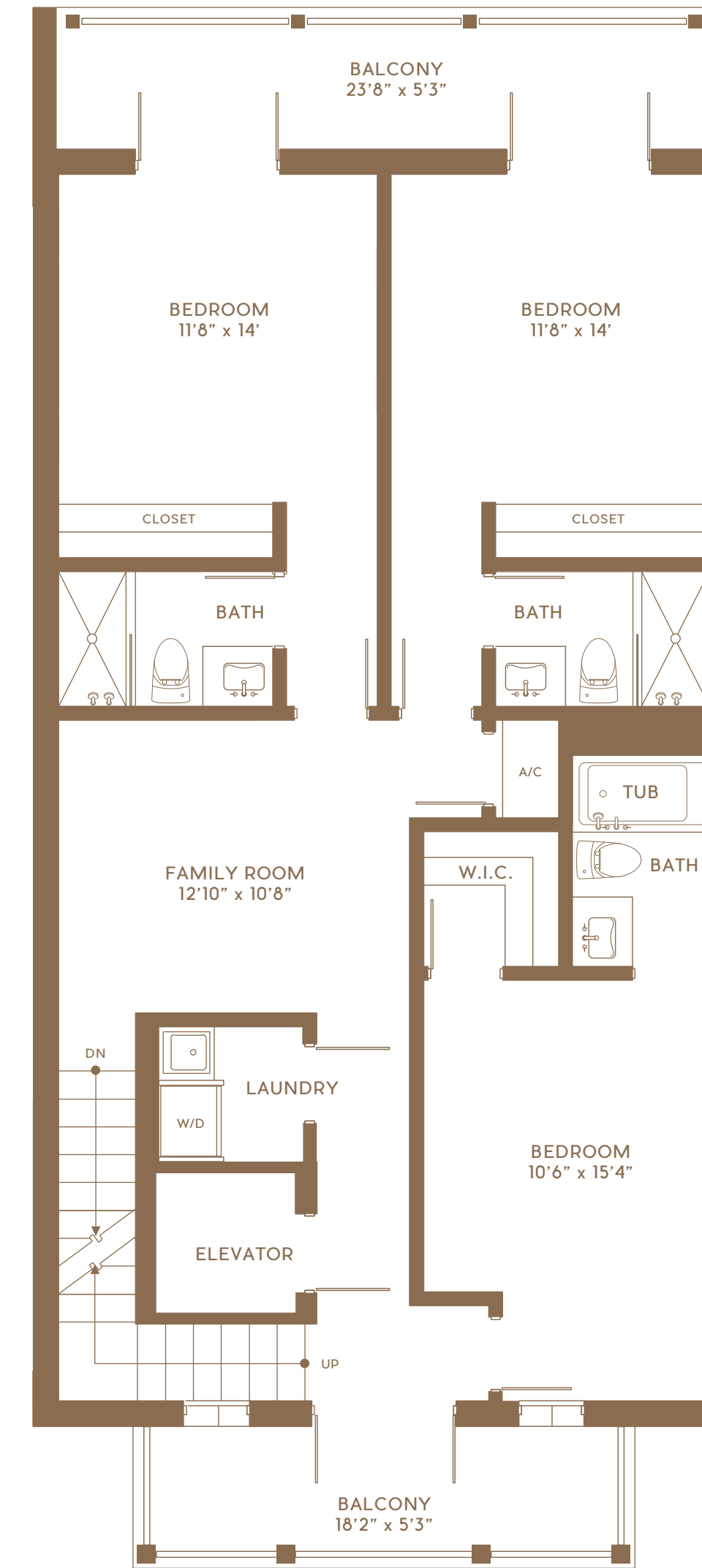
Interior Area	3,260 Sq Ft
Climate Controlled Storage	157 Sq Ft
TOTAL A/C	3,417 Sq Ft
Terrace/Balcony	606 Sq Ft
Front and Back Yard Area	985 Sq Ft
Garage	568 Sq Ft
Garage Storage	24 Sq Ft
TOTAL NON A/C	2,183 Sq Ft
GRAND TOTAL	5,600 Sq Ft



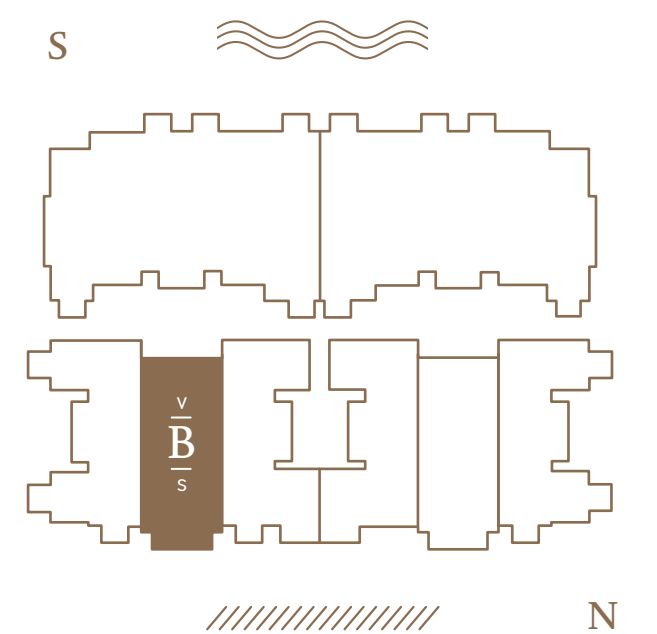
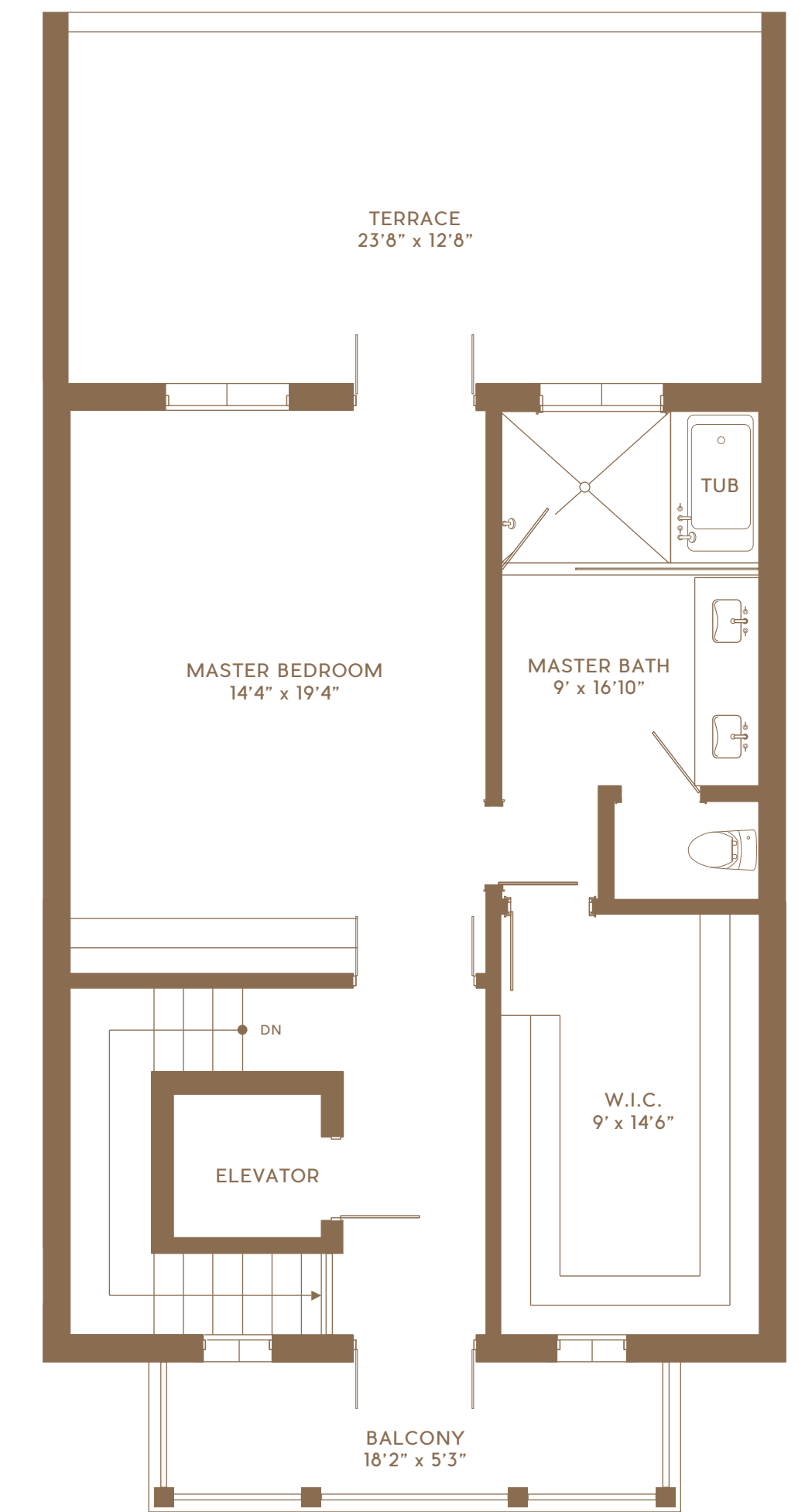
1st Floor



2nd Floor



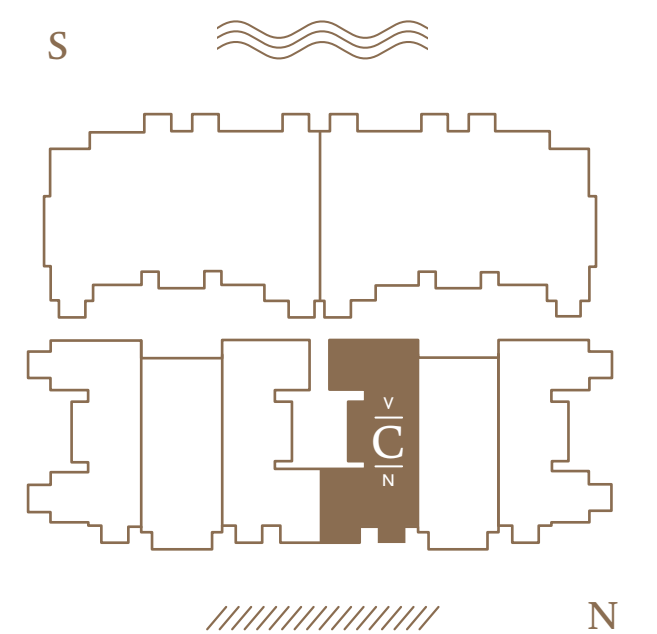
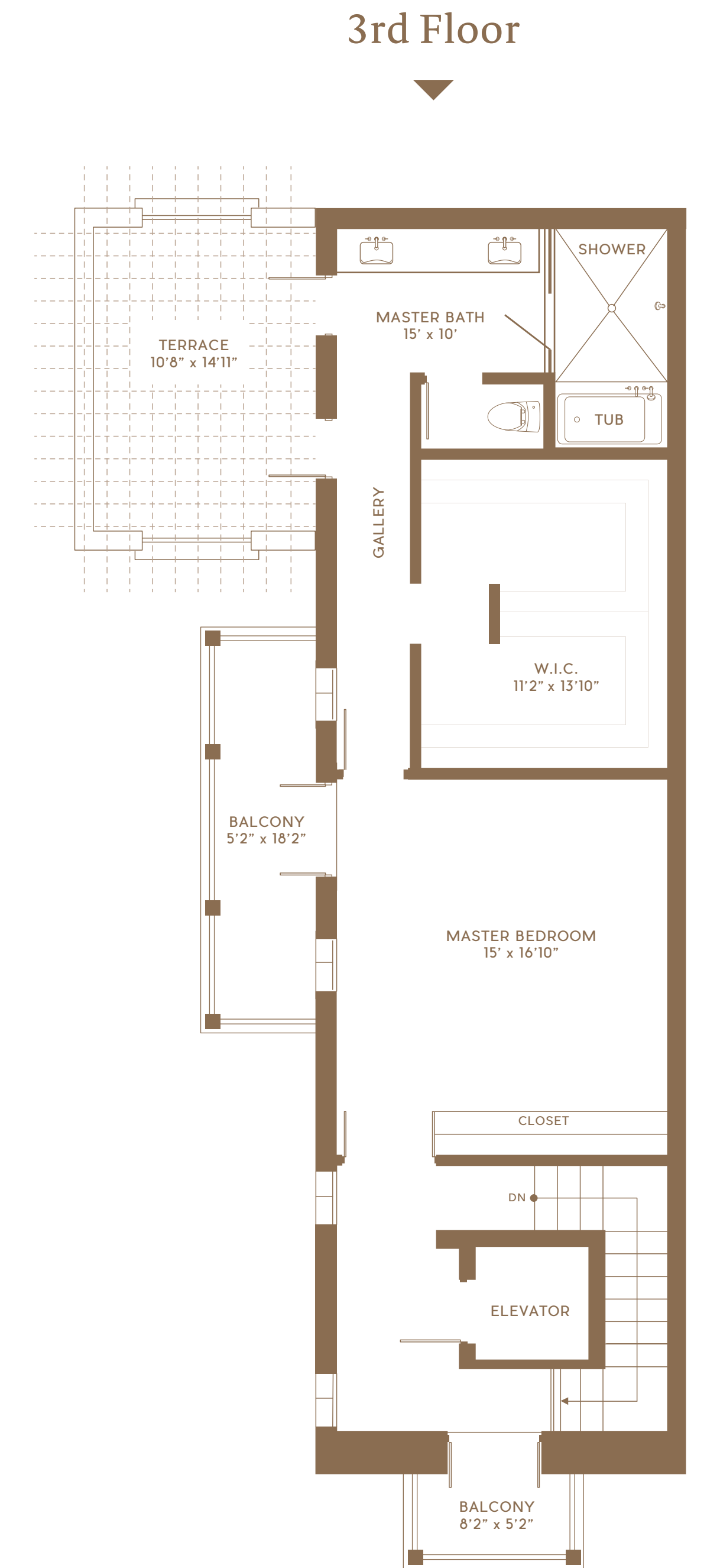
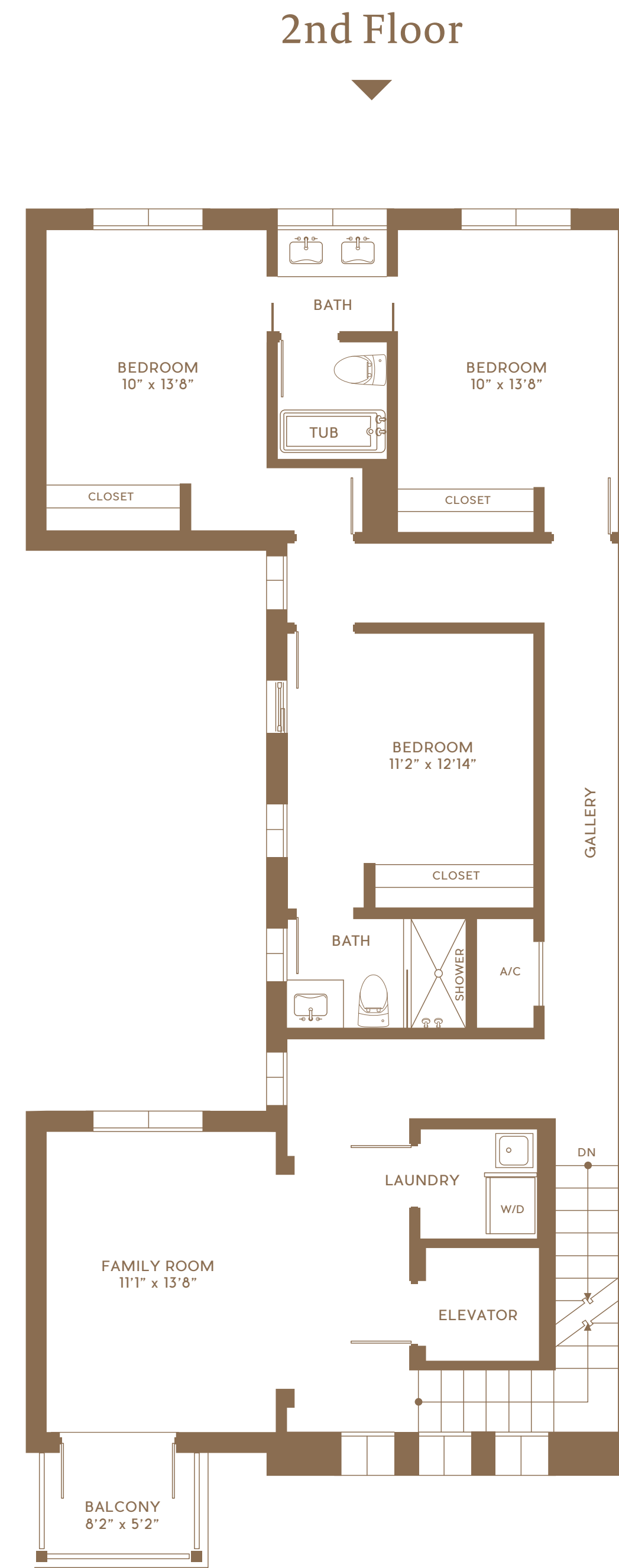
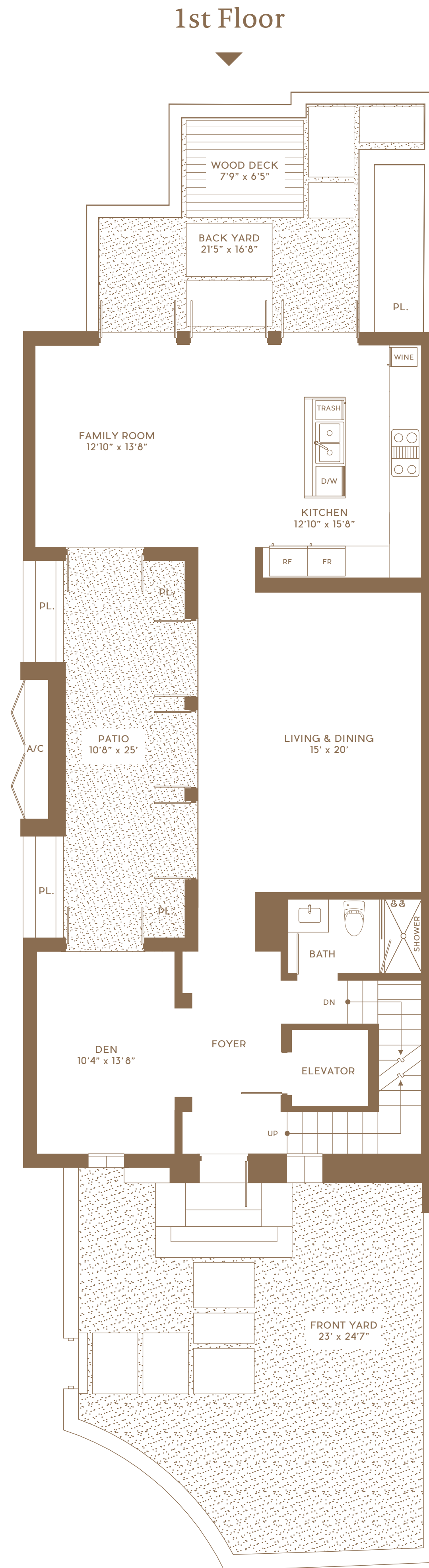
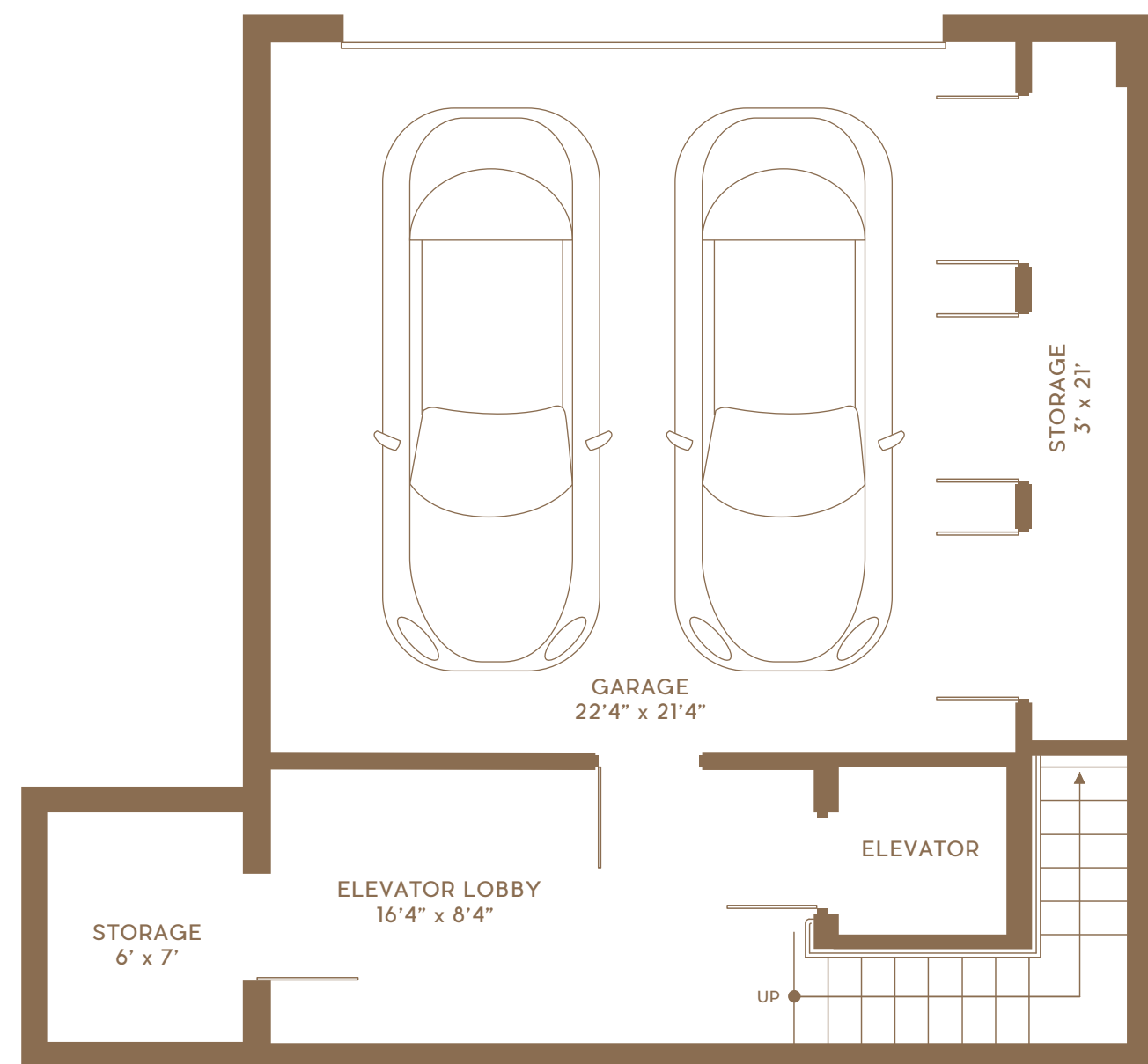
3rd Floor



VILLA C NORTH

4 BEDROOMS • 4 BATHS • DEN

Interior Area	3,593 Sq Ft
TOTAL A/C	3,593 Sq Ft
Terrace/Balcony	332 Sq Ft
Front and Back Yard Area	859 Sq Ft
Patio	226 Sq Ft
Garage	476 Sq Ft
Garage Storage	105 Sq Ft
TOTAL NON A/C	1,998 Sq Ft
GRAND TOTAL	5,591 Sq Ft

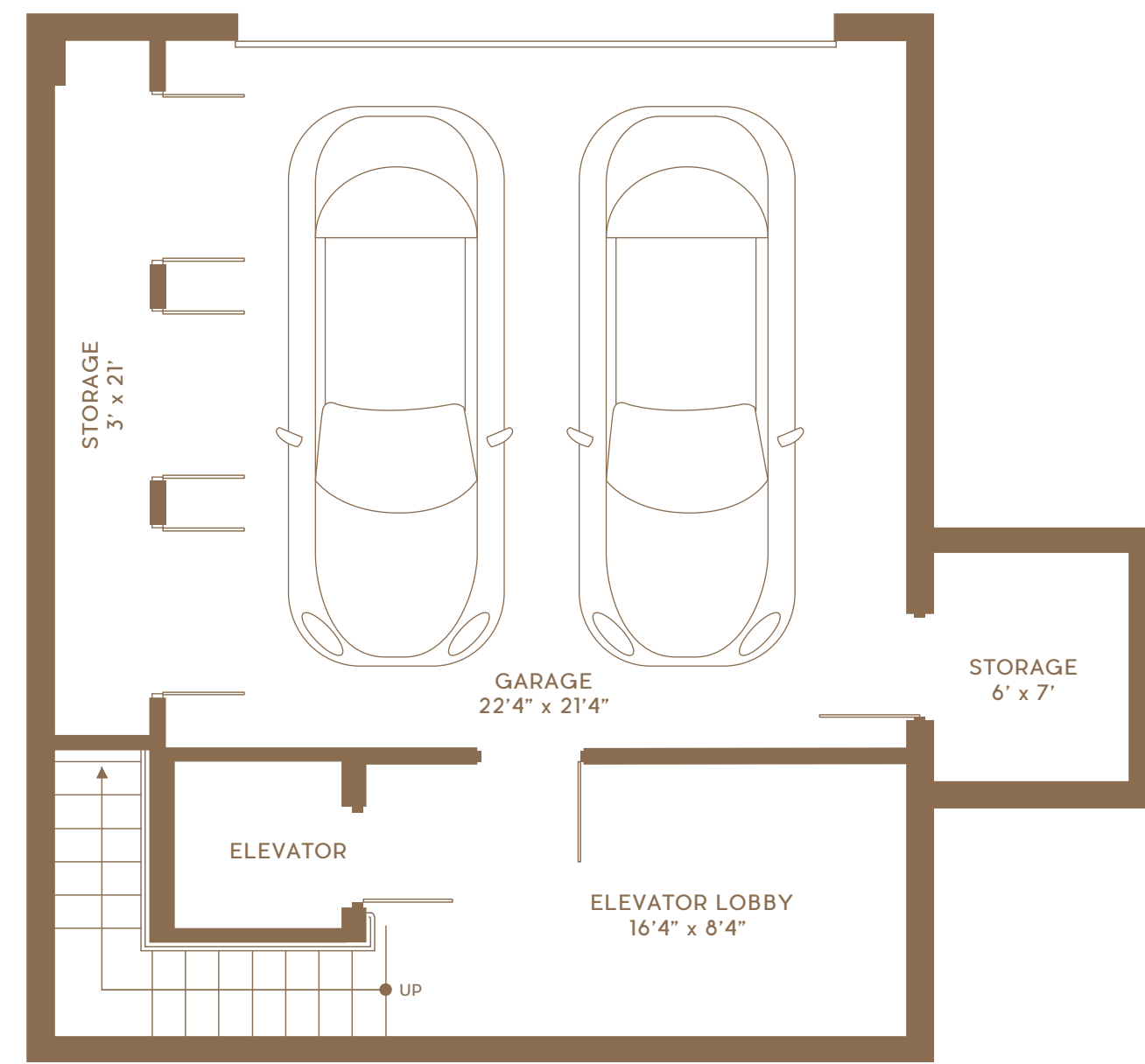


Stated square footages and dimensions of units are based on measurements to the exterior boundaries of the exterior walls and the centerline of interior demising walls between units and will vary from the square footages and dimensions of the unit that would be determined by using the description and definition of the "Unit" set forth in the Declaration (which generally only includes the interior airspace between the perimeter walls and excludes interior structural components and other common elements). This method of measurement is generally used in sales and marketing materials and is provided to allow a prospective buyer to compare the Units with units in other condominium projects that utilize the same method. For your reference, the square footage of the Unit, determined in accordance with the definition of the "Unit" set forth in the Declaration, is - or - 3,114 sq. ft. for unit type Villa C North. A/C Storage areas, terraces, patios and balconies are not part of the "Unit". Measurements and dimensions of rooms set forth on this floor plan are generally taken at the farthest points of each given room (as if the room were a perfect rectangle), without regard for any cutouts, soffits or other variations. Accordingly, the square footage of the actual room will typically be smaller than the product obtained by multiplying the stated length times width. All square footages, dimensions and measurements are estimates which are based on preliminary plans and will vary with actual construction. All floor plans, specifications and other development plans are proposed and conceptual only, and are subject to change and will not necessarily accurately reflect the final plans and specifications.

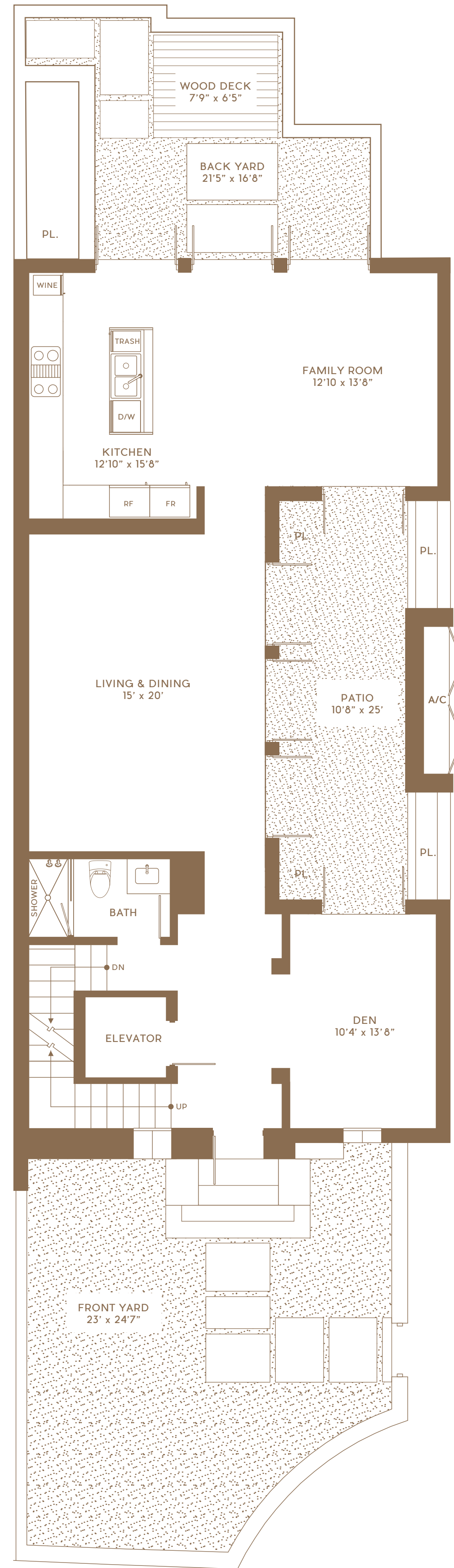
VILLA C SOUTH

4 BEDROOMS • 4 BATHS • DEN

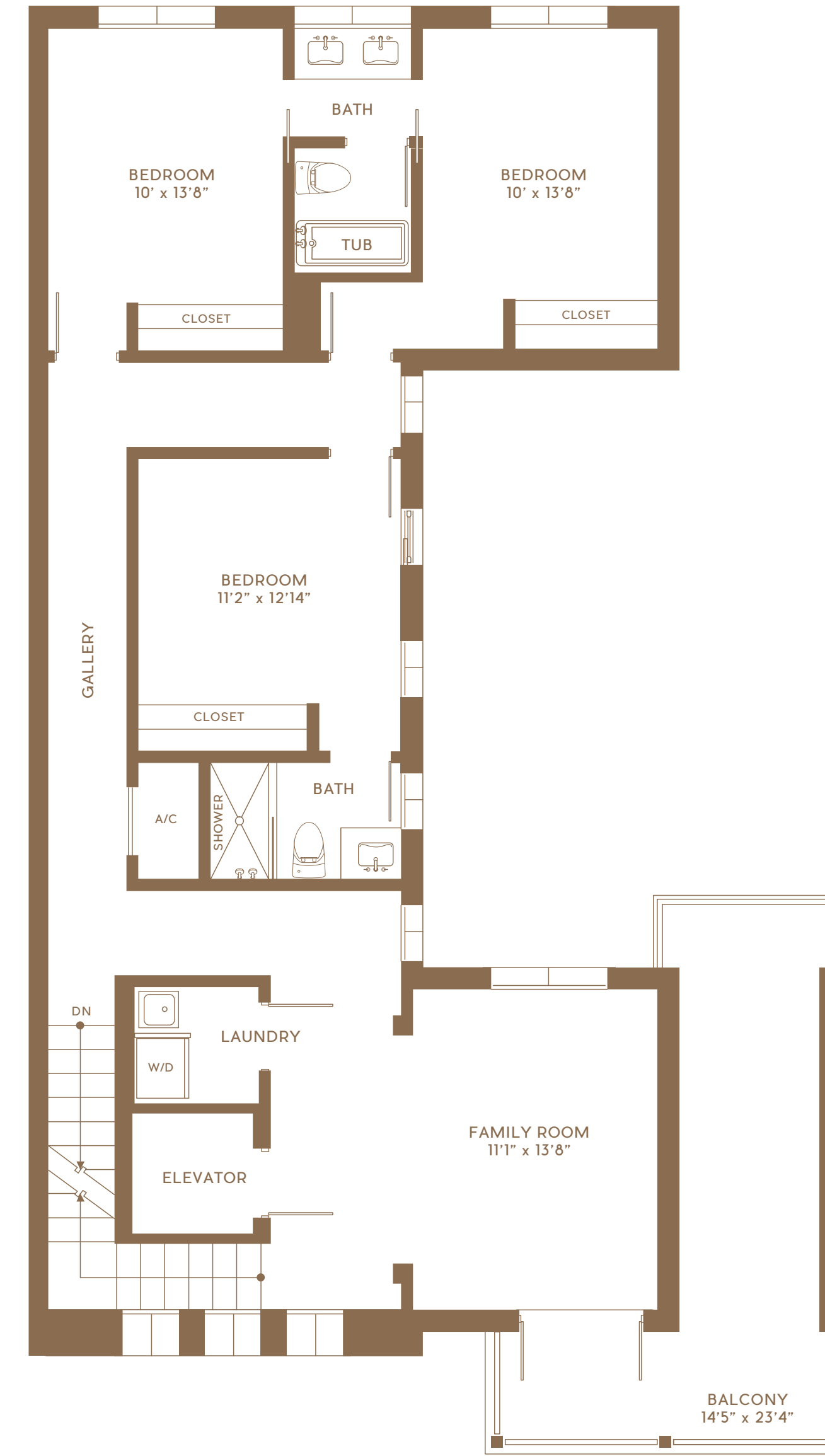
Interior Area	3,593 Sq Ft
TOTAL A/C	3,593 Sq Ft
Terrace/Balcony	480 Sq Ft
Front and Back Yard Area	859 Sq Ft
Patio	226 Sq Ft
Garage	476 Sq Ft
Garage Storage	105 Sq Ft
TOTAL NON A/C	2,146 Sq Ft
GRAND TOTAL	5,739 Sq Ft



1st Floor



2nd Floor



3rd Floor

