

# SHORE CLUB

MIAMI BEACH

POOL OR OCEAN VIEWS

## NORTH TOWER

RESIDENCE TYPE O

UNITS N-205, N-305,

N-405, N-505, N-605

FLOORS 2-6

3 BEDROOMS

3 BATHROOMS

INTERIOR

1,806 SQ FT 168 SQ M

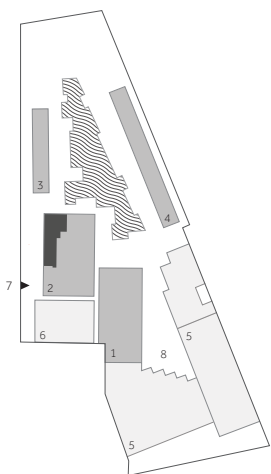
EXTERIOR

78 SQ FT 7 SQ M

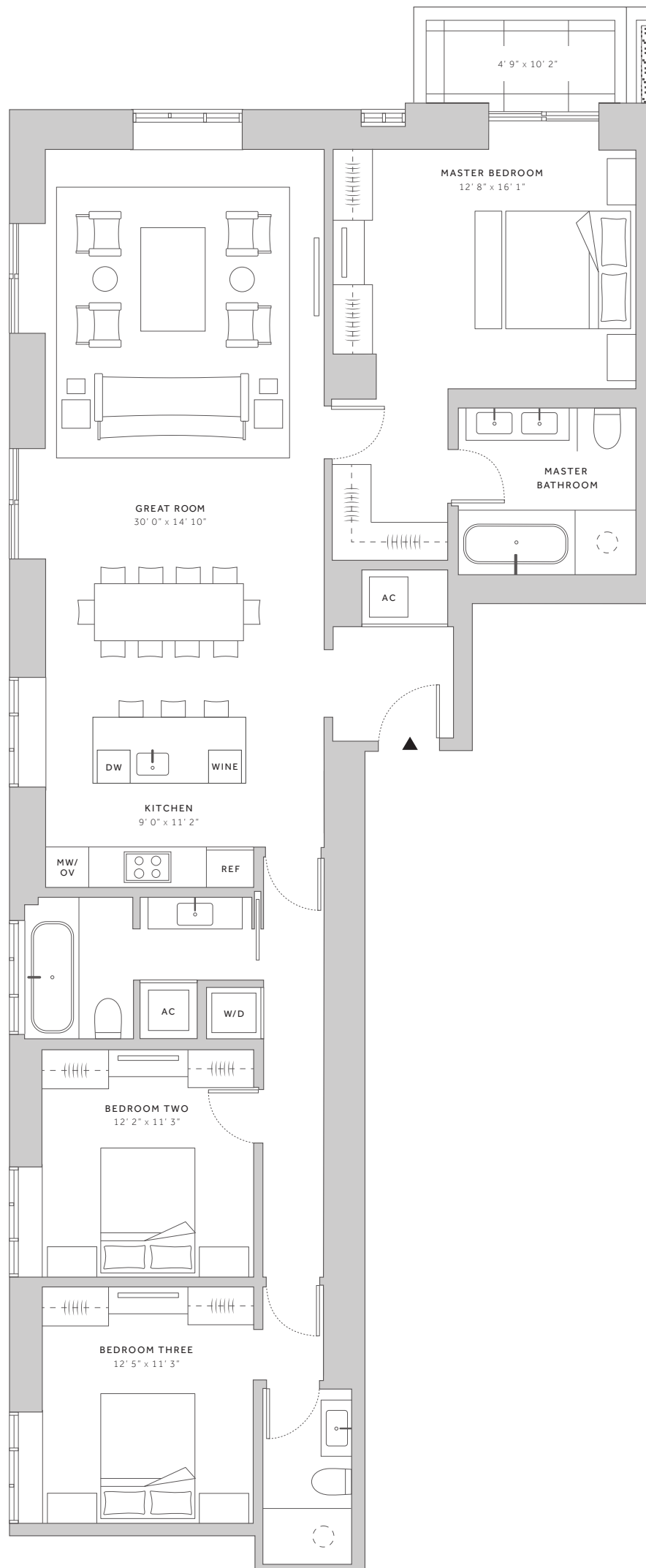
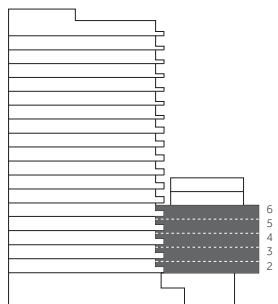
TOTAL

1,884 SQ FT 175 SQ M

▲ ATLANTIC OCEAN  
◀ N



- 1 - CENTRAL TOWER
- 2 - NORTH TOWER
- 3 - NORTH BEACH HOUSES
- 4 - SOUTH BEACH HOUSES
- 5 - HOTEL
- 6 - AMENITIES
- 7 - RESIDENTIAL LOBBY
- 8 - ENZO ENEA GARDEN



ORAL REPRESENTATIONS CANNOT BE RELIED UPON AS CORRECTLY STATING THE REPRESENTATIONS OF THE DEVELOPER. FOR CORRECT REPRESENTATIONS, MAKE REFERENCE TO THE DOCUMENTS REQUIRED BY SECTION 718.503, FLORIDA STATUTES, TO BE FURNISHED BY A DEVELOPER TO A BUYER OR LESSEE.

This is not intended to be an offer to sell, or solicitation to buy, condominium units to residents of any jurisdiction where prohibited by law, and your eligibility for purchase will depend upon your state of residency. This offering is made only by the prospectus for the condominium and no statement should be relied upon if not made in the prospectus. Depicted is an artist's rendering which is subject to change. All plans, features and specifications are subject to change without notice. All depictions of matters of detail shown hereon, including, without limitation, items of finish, furniture and decoration, are conceptual only and are not necessarily included in the Unit. For a correct representation of the items included in the Unit, see the Purchase Agreement. Stated dimensions shown hereon are approximate and are measured to the exterior face of exterior walls and to the center line of demising walls. This method of measurement varies from, and is larger than, the dimensions that would be determined by using the description and definition of the "Unit" set forth in the Declaration (which generally only includes the interior airspace between the perimeter walls and excludes interior structural components). Note that measurements of rooms set forth on this floor plan are generally taken at the greatest points of each given room (as if the room were a perfect rectangle), without regard for any cutouts. Accordingly, the area of the actual room will typically be smaller than the product obtained by multiplying the stated length times width. All dimensions are approximate and may vary with actual construction.



# SHORE CLUB

MIAMI BEACH

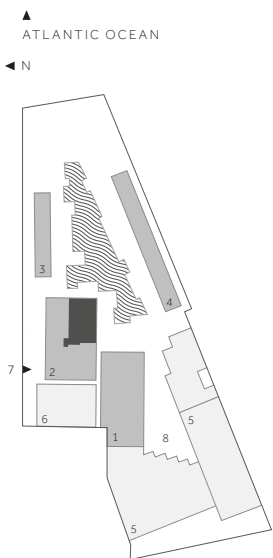
**NORTH TOWER**  
RESIDENCE TYPE N-T  
UNIT N-206

FLOOR 2  
3 BEDROOMS  
3 BATHROOMS

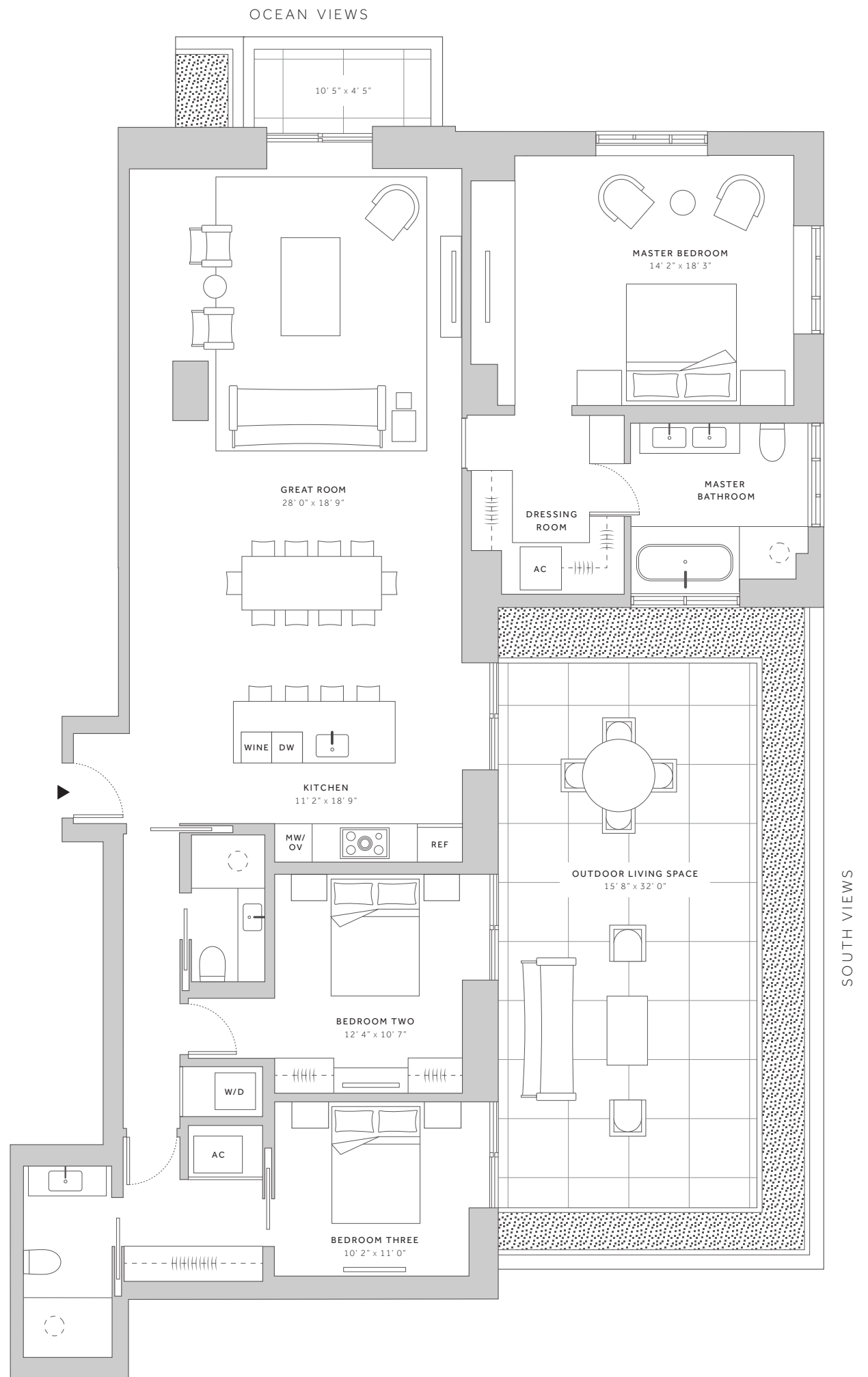
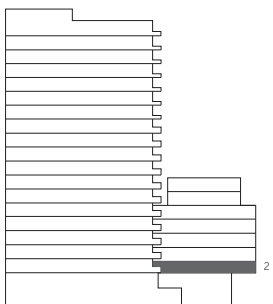
INTERIOR  
1,950 SQ FT 181 SQ M

EXTERIOR  
686 SQ FT 64 SQ M

TOTAL  
2,636 SQ FT 245 SQ M



- 1 - CENTRAL TOWER
- 2 - NORTH TOWER
- 3 - NORTH BEACH HOUSES
- 4 - SOUTH BEACH HOUSES
- 5 - HOTEL
- 6 - AMENITIES
- 7 - RESIDENTIAL LOBBY
- 8 - ENZO ENEA GARDEN



1901 COLLINS AVENUE MIAMI BEACH FLORIDA 33139

ORAL REPRESENTATIONS CANNOT BE RELIED UPON AS CORRECTLY STATING THE REPRESENTATIONS OF THE DEVELOPER. FOR CORRECT REPRESENTATIONS, MAKE REFERENCE TO THE DOCUMENTS REQUIRED BY SECTION 718.503, FLORIDA STATUTES, TO BE FURNISHED BY A DEVELOPER TO A BUYER OR LESSEE.

This is not intended to be an offer to sell, or solicitation to buy, condominium units to residents of any jurisdiction where prohibited by law, and your eligibility for purchase will depend upon your state of residency. This offering is made only by the prospectus for the condominium and no statement should be relied upon if not made in the prospectus. Depicted is an artist's rendering which is subject to change. All plans, features and specifications are subject to change without notice. All depictions of matters of detail shown hereon, including, without limitation, items of finish, furniture and decoration, are conceptual only and are not necessarily included in the Unit. For a correct representation of the items included in the Unit, see the Purchase Agreement. Stated dimensions shown hereon are approximate and are measured to the exterior face of exterior walls and to the center line of demising walls. This method of measurement varies from, and is larger than, the dimensions that would be determined by using the description and definition of the "Unit" set forth in the Declaration (which generally only includes the interior airspace between the perimeter walls and excludes interior structural components). Note that measurements of rooms set forth on this floor plan are generally taken at the greatest points of each given room (as if the room were a perfect rectangle), without regard for any cutouts. Accordingly, the area of the actual room will typically be smaller than the product obtained by multiplying the stated length times width. All dimensions are approximate and may vary with actual construction.



# SHORE CLUB

MIAMI BEACH

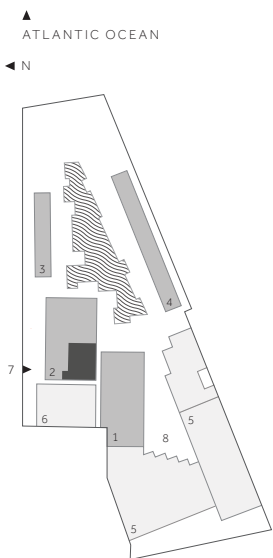
**NORTH TOWER**  
RESIDENCE TYPE M-T  
UNIT N-207

FLOOR 2  
2 BEDROOMS  
2.5 BATHROOMS

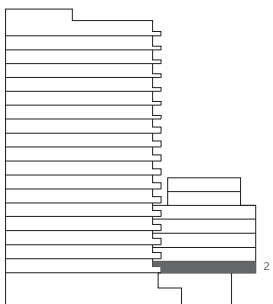
INTERIOR  
1,273 SQ FT 118 SQ M

EXTERIOR  
926 SQ FT 86 SQ M

TOTAL  
2,199 SQ FT 204 SQ M

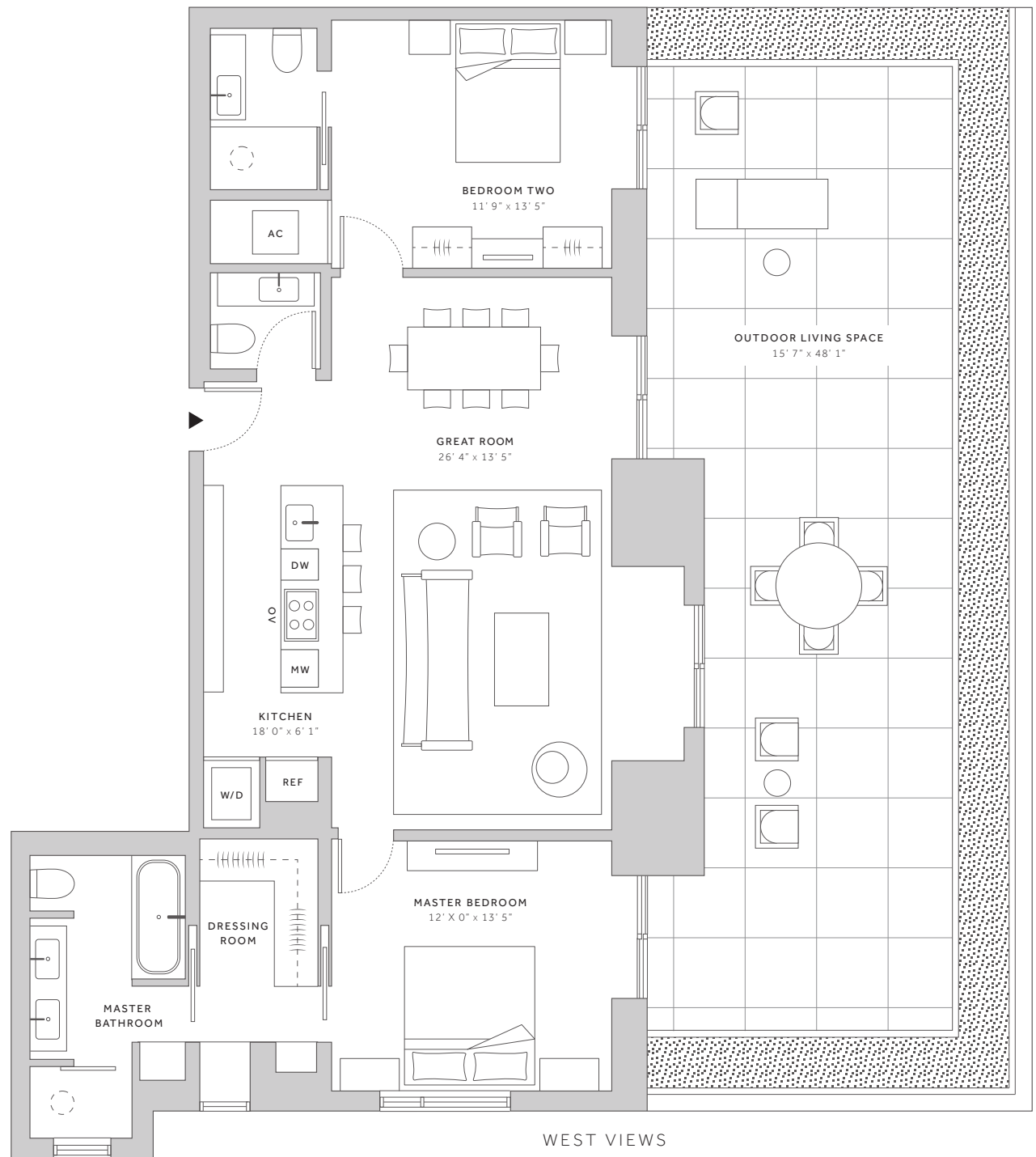


- 1 - CENTRAL TOWER
- 2 - NORTH TOWER
- 3 - NORTH BEACH HOUSES
- 4 - SOUTH BEACH HOUSES
- 5 - HOTEL
- 6 - AMENITIES
- 7 - RESIDENTIAL LOBBY
- 8 - ENZO ENEA GARDEN



1901 COLLINS AVENUE MIAMI BEACH FLORIDA 33139

OCEAN VIEWS



SOUTH VIEWS

WEST VIEWS

ORAL REPRESENTATIONS CANNOT BE RELIED UPON AS CORRECTLY STATING THE REPRESENTATIONS OF THE DEVELOPER. FOR CORRECT REPRESENTATIONS, MAKE REFERENCE TO THE DOCUMENTS REQUIRED BY SECTION 718.503, FLORIDA STATUTES, TO BE FURNISHED BY A DEVELOPER TO A BUYER OR LESSEE.

This is not intended to be an offer to sell, or solicitation to buy, condominium units to residents of any jurisdiction where prohibited by law, and your eligibility for purchase will depend upon your state of residency. This offering is made only by the prospectus for the condominium and no statement should be relied upon if not made in the prospectus. Depicted is an artist's rendering which is subject to change. All plans, features and specifications are subject to change without notice. All depictions of matters of detail shown hereon, including, without limitation, items of finish, furniture and decoration, are conceptual only and are not necessarily included in the Unit. For a correct representation of the items included in the Unit, see the Purchase Agreement. Stated dimensions shown hereon are approximate and are measured to the exterior face of exterior walls and to the center line of demising walls. This method of measurement varies from, and is larger than, the dimensions that would be determined by using the description and definition of the "Unit" set forth in the Declaration (which generally only includes the interior airspace between the perimeter walls and excludes interior structural components). Note that measurements of rooms set forth on this floor plan are generally taken at the greatest points of each given room (as if the room were a perfect rectangle), without regard for any cutouts. Accordingly, the area of the actual room will typically be smaller than the product obtained by multiplying the stated length times width. All dimensions are approximate and may vary with actual construction.



# SHORE CLUB

MIAMI BEACH

## NORTH TOWER

RESIDENCE TYPE R

UNITS N-208, N-308

N-408, N-508, N-608

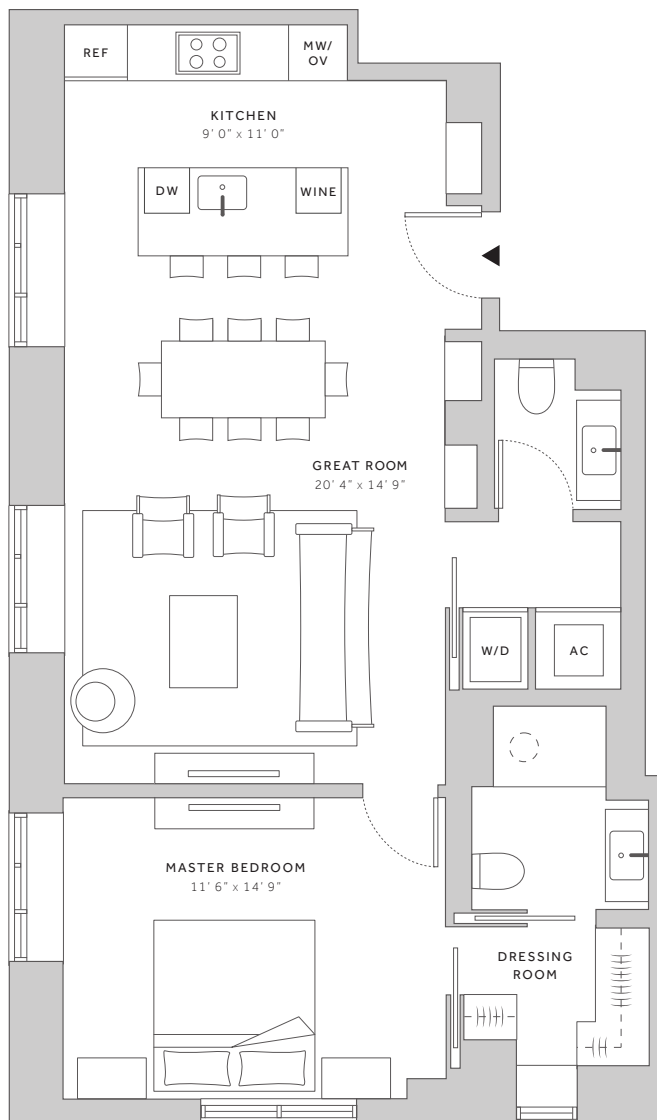
FLOORS 2-6

1 BEDROOM

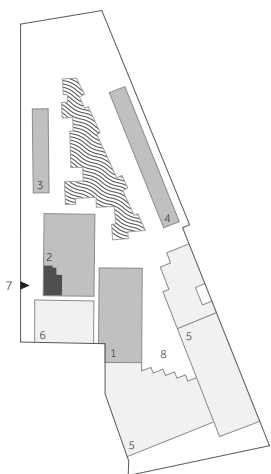
1.5 BATHROOMS

TOTAL

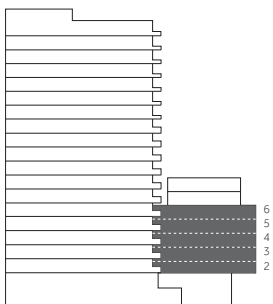
940 SQ FT 87 SQ M



▲ ATLANTIC OCEAN  
◀ N



- 1 - CENTRAL TOWER
- 2 - NORTH TOWER
- 3 - NORTH BEACH HOUSES
- 4 - SOUTH BEACH HOUSES
- 5 - HOTEL
- 6 - AMENITIES
- 7 - RESIDENTIAL LOBBY
- 8 - ENZO ENEA GARDEN



1901 COLLINS AVENUE

MIAMI BEACH FLORIDA 33139

ORAL REPRESENTATIONS CANNOT BE RELIED UPON AS CORRECTLY STATING THE REPRESENTATIONS OF THE DEVELOPER. FOR CORRECT REPRESENTATIONS, MAKE REFERENCE TO THE DOCUMENTS REQUIRED BY SECTION 718.503, FLORIDA STATUTES, TO BE FURNISHED BY A DEVELOPER TO A BUYER OR LESSEE.

This is not intended to be an offer to sell, or solicitation to buy, condominium units to residents of any jurisdiction where prohibited by law, and your eligibility for purchase will depend upon your state of residency. This offering is made only by the prospectus for the condominium and no statement should be relied upon if not made in the prospectus. Depicted is an artist's rendering which is subject to change. All plans, features and specifications are subject to change without notice. All depictions of matters of detail shown hereon, including, without limitation, items of finish, furniture and decoration, are conceptual only and are not necessarily included in the Unit. For a correct representation of the items included in the Unit, see the Purchase Agreement. Stated dimensions shown hereon are approximate and are measured to the exterior face of exterior walls and to the center line of demising walls. This method of measurement varies from, and is larger than, the dimensions that would be determined by using the description and definition of the "Unit" set forth in the Declaration (which generally only includes the interior airspace between the perimeter walls and excludes interior structural components). Note that measurements of rooms set forth on this floor plan are generally taken at the greatest points of each given room (as if the room were a perfect rectangle), without regard for any cutouts. Accordingly, the area of the actual room will typically be smaller than the product obtained by multiplying the stated length times width. All dimensions are approximate and may vary with actual construction.



# SHORE CLUB

MIAMI BEACH

## NORTH TOWER

RESIDENCE TYPE N

UNITS N-306, N-406,

N-506, N-606

FLOOR 3-6

3 BEDROOMS

3 BATHROOMS

INTERIOR

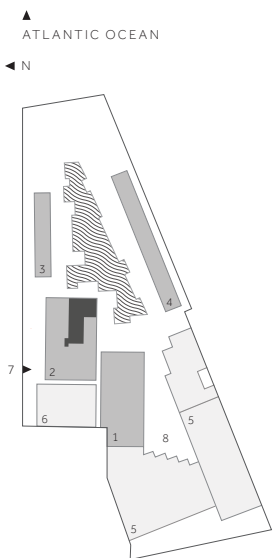
1,950 SQ FT 181 SQ M

EXTERIOR

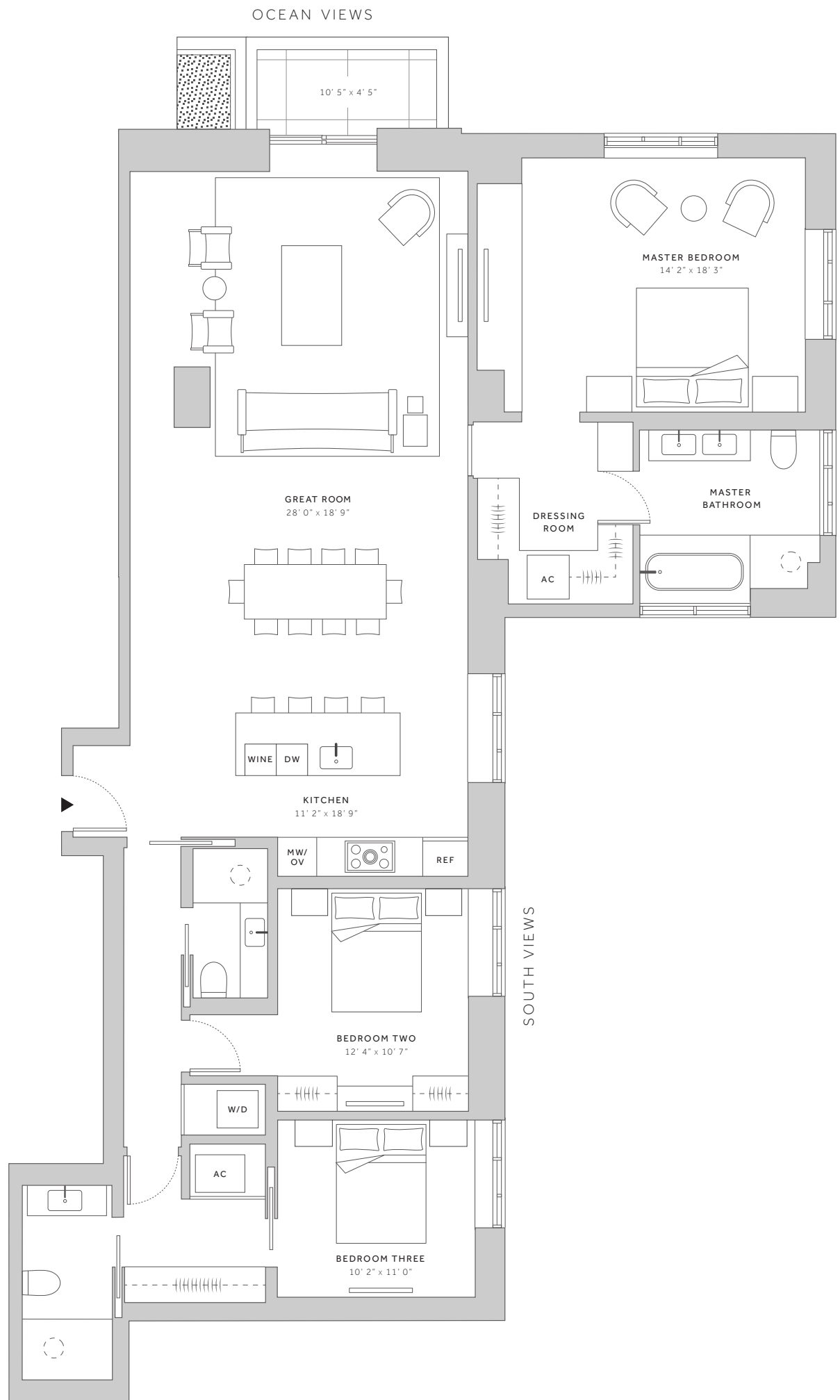
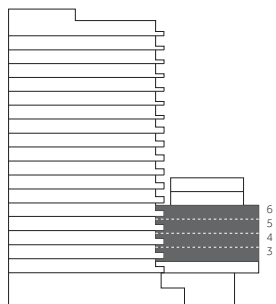
78 SQ FT 7 SQ M

TOTAL

2,028 SQ FT 188 SQ M



- 1 - CENTRAL TOWER
- 2 - NORTH TOWER
- 3 - NORTH BEACH HOUSES
- 4 - SOUTH BEACH HOUSES
- 5 - HOTEL
- 6 - AMENITIES
- 7 - RESIDENTIAL LOBBY
- 8 - ENZO ENEA GARDEN



1901 COLLINS AVENUE

MIAMI BEACH FLORIDA 33139

ORAL REPRESENTATIONS CANNOT BE RELIED UPON AS CORRECTLY STATING THE REPRESENTATIONS OF THE DEVELOPER. FOR CORRECT REPRESENTATIONS, MAKE REFERENCE TO THE DOCUMENTS REQUIRED BY SECTION 718.503, FLORIDA STATUTES, TO BE FURNISHED BY A DEVELOPER TO A BUYER OR LESSEE.

This is not intended to be an offer to sell, or solicitation to buy, condominium units to residents of any jurisdiction where prohibited by law, and your eligibility for purchase will depend upon your state of residency. This offering is made only by the prospectus for the condominium and no statement should be relied upon if not made in the prospectus. Depicted is an artist's rendering which is subject to change. All plans, features and specifications are subject to change without notice. All depictions of matters of detail shown hereon, including, without limitation, items of finish, furniture and decoration, are conceptual only and are not necessarily included in the Unit. For a correct representation of the items included in the Unit, see the Purchase Agreement. Stated dimensions shown hereon are approximate and are measured to the exterior face of exterior walls and to the center line of demising walls. This method of measurement varies from, and is larger than, the dimensions that would be determined by using the description and definition of the "Unit" set forth in the Declaration (which generally only includes the interior airspace between the perimeter walls and excludes interior structural components). Note that measurements of rooms set forth on this floor plan are generally taken at the greatest points of each given room (as if the room were a perfect rectangle), without regard for any cutouts. Accordingly, the area of the actual room will typically be smaller than the product obtained by multiplying the stated length times width. All dimensions are approximate and may vary with actual construction.



# SHORE CLUB

MIAMI BEACH

## NORTH TOWER

RESIDENCE TYPE M

UNITS N-307, N-407,

N-507, N-607

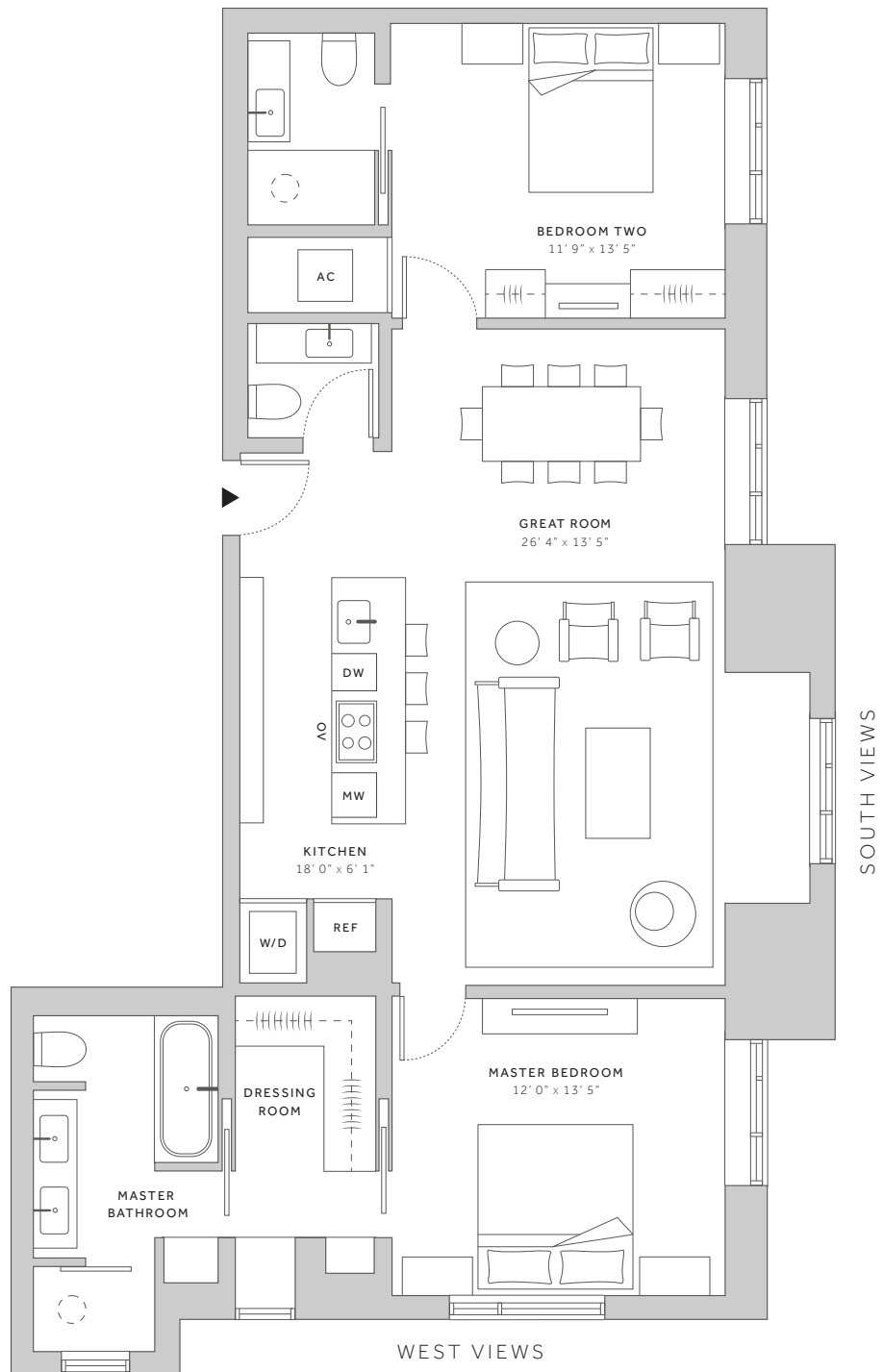
FLOOR 3-6

2 BEDROOMS

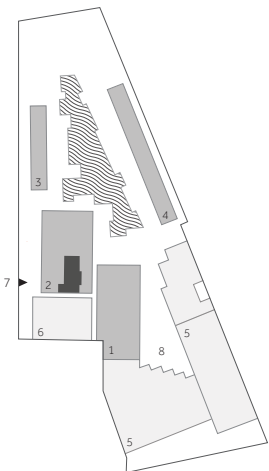
2.5 BATHROOMS

TOTAL

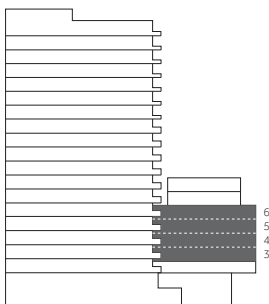
1,276 SQ FT 119 SQ M



▲ ATLANTIC OCEAN  
◀ N



- 1 - CENTRAL TOWER
- 2 - NORTH TOWER
- 3 - NORTH BEACH HOUSES
- 4 - SOUTH BEACH HOUSES
- 5 - HOTEL
- 6 - AMENITIES
- 7 - RESIDENTIAL LOBBY
- 8 - ENZO ENEA GARDEN



1901 COLLINS AVENUE

MIAMI BEACH FLORIDA 33139

ORAL REPRESENTATIONS CANNOT BE RELIED UPON AS CORRECTLY STATING THE REPRESENTATIONS OF THE DEVELOPER. FOR CORRECT REPRESENTATIONS, MAKE REFERENCE TO THE DOCUMENTS REQUIRED BY SECTION 718.503, FLORIDA STATUTES, TO BE FURNISHED BY A DEVELOPER TO A BUYER OR LESSEE.

This is not intended to be an offer to sell, or solicitation to buy, condominium units to residents of any jurisdiction where prohibited by law, and your eligibility for purchase will depend upon your state of residency. This offering is made only by the prospectus for the condominium and no statement should be relied upon if not made in the prospectus. Depicted is an artist's rendering which is subject to change. All plans, features and specifications are subject to change without notice. All depictions of matters of detail shown hereon, including, without limitation, items of finish, furniture and decoration, are conceptual only and are not necessarily included in the Unit. For a correct representation of the items included in the Unit, see the Purchase Agreement. Stated dimensions shown hereon are approximate and are measured to the exterior face of exterior walls and to the center line of demising walls. This method of measurement varies from, and is larger than, the dimensions that would be determined by using the description and definition of the "Unit" set forth in the Declaration (which generally only includes the interior airspace between the perimeter walls and excludes interior structural components). Note that measurements of rooms set forth on this floor plan are generally taken at the greatest points of each given room (as if the room were a perfect rectangle), without regard for any cutouts. Accordingly, the area of the actual room will typically be smaller than the product obtained by multiplying the stated length times width. All dimensions are approximate and may vary with actual construction.



# SHORE CLUB

MIAMI BEACH

## NORTH TOWER

RESIDENCE TYPE Q

UNIT N-705

FLOOR 7

2 BEDROOMS

2.5 BATHROOMS

INTERIOR

1,370 SQ FT 127 SQ M

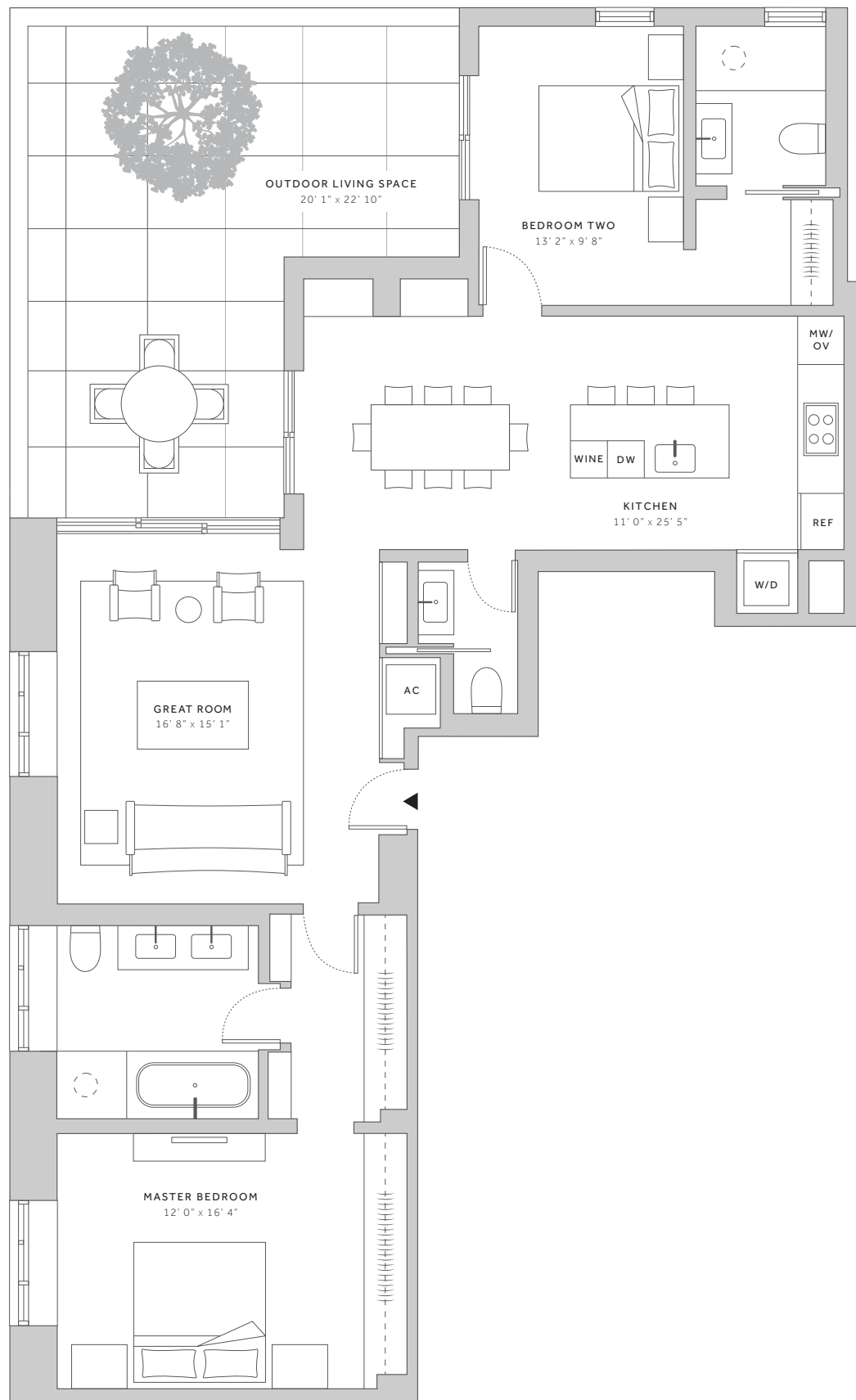
EXTERIOR

386 SQ FT 36 SQ M

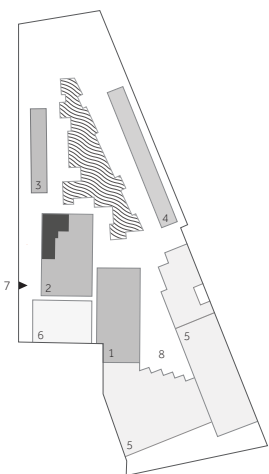
TOTAL

1,756 SQ FT 163 SQ M

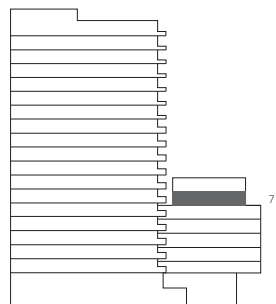
OCEAN VIEWS



▲ ATLANTIC OCEAN  
◀ N



- 1 - CENTRAL TOWER
- 2 - NORTH TOWER
- 3 - NORTH BEACH HOUSES
- 4 - SOUTH BEACH HOUSES
- 5 - HOTEL
- 6 - AMENITIES
- 7 - RESIDENTIAL LOBBY
- 8 - ENZO ENEA GARDEN



1901 COLLINS AVENUE

MIAMI BEACH FLORIDA 33139

ORAL REPRESENTATIONS CANNOT BE RELIED UPON AS CORRECTLY STATING THE REPRESENTATIONS OF THE DEVELOPER. FOR CORRECT REPRESENTATIONS, MAKE REFERENCE TO THE DOCUMENTS REQUIRED BY SECTION 718.503, FLORIDA STATUTES, TO BE FURNISHED BY A DEVELOPER TO A BUYER OR LESSEE.

This is not intended to be an offer to sell, or solicitation to buy, condominium units to residents of any jurisdiction where prohibited by law, and your eligibility for purchase will depend upon your state of residency. This offering is made only by the prospectus for the condominium and no statement should be relied upon if not made in the prospectus. Depicted is an artist's rendering which is subject to change. All plans, features and specifications are subject to change without notice. All depictions of matters of detail shown hereon, including, without limitation, items of finish, furniture and decoration, are conceptual only and are not necessarily included in the Unit. For a correct representation of the items included in the Unit, see the Purchase Agreement. Stated dimensions shown hereon are approximate and are measured to the exterior face of exterior walls and to the center line of demising walls. This method of measurement varies from, and is larger than, the dimensions that would be determined by using the description and definition of the "Unit" set forth in the Declaration (which generally only includes the interior airspace between the perimeter walls and excludes interior structural components). Note that measurements of rooms set forth on this floor plan are generally taken at the greatest points of each given room (as if the room were a perfect rectangle), without regard for any cutouts. Accordingly, the area of the actual room will typically be smaller than the product obtained by multiplying the stated length times width. All dimensions are approximate and may vary with actual construction.



# SHORE CLUB

MIAMI BEACH

## NORTH TOWER

RESIDENCE TYPE P

UNIT N-706

FLOOR 7

2 BEDROOMS

2.5 BATHROOMS

### INTERIOR

1,458 SQ FT 135 SQ M

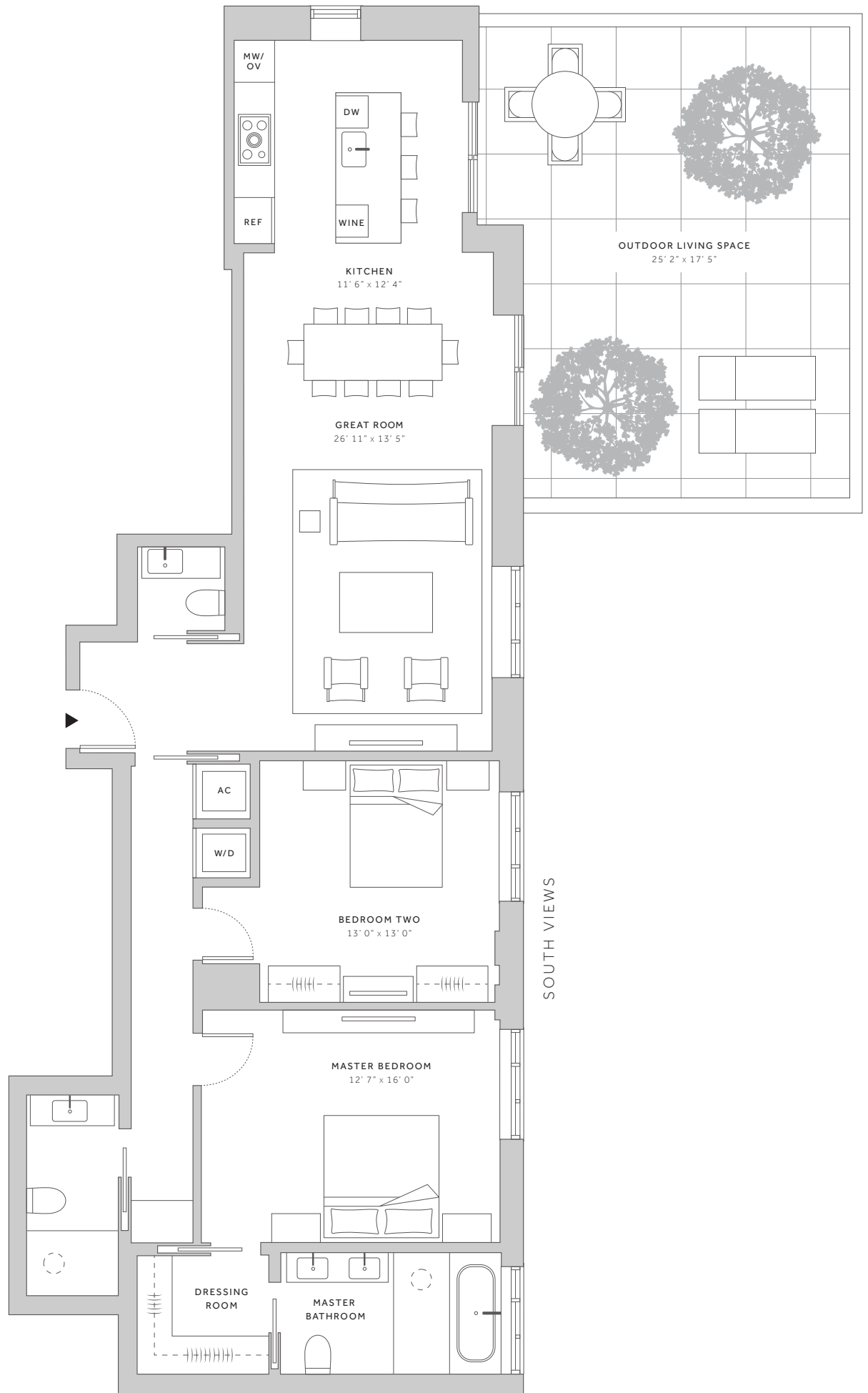
### EXTERIOR

519 SQ FT 48 SQ M

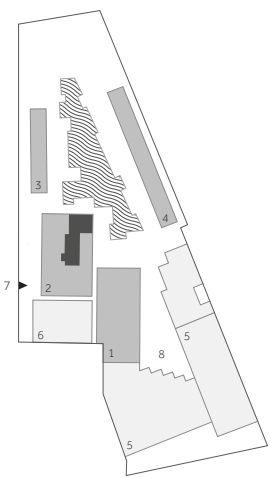
### TOTAL

1,977 SQ FT 184 SQ M

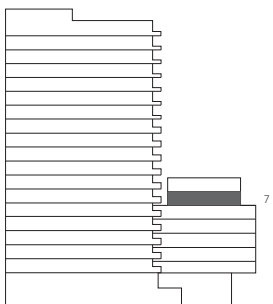
OCEAN VIEWS



▲ ATLANTIC OCEAN  
◀ N



- 1 - CENTRAL TOWER
- 2 - NORTH TOWER
- 3 - NORTH BEACH HOUSES
- 4 - SOUTH BEACH HOUSES
- 5 - HOTEL
- 6 - AMENITIES
- 7 - RESIDENTIAL LOBBY
- 8 - ENZO ENEA GARDEN



1901 COLLINS AVENUE

MIAMI BEACH FLORIDA 33139

ORAL REPRESENTATIONS CANNOT BE RELIED UPON AS CORRECTLY STATING THE REPRESENTATIONS OF THE DEVELOPER. FOR CORRECT REPRESENTATIONS, MAKE REFERENCE TO THE DOCUMENTS REQUIRED BY SECTION 718.503, FLORIDA STATUTES, TO BE FURNISHED BY A DEVELOPER TO A BUYER OR LESSEE.

This is not intended to be an offer to sell, or solicitation to buy, condominium units to residents of any jurisdiction where prohibited by law, and your eligibility for purchase will depend upon your state of residency. This offering is made only by the prospectus for the condominium and no statement should be relied upon if not made in the prospectus. Depicted is an artist's rendering which is subject to change. All plans, features and specifications are subject to change without notice. All depictions of matters of detail shown hereon, including, without limitation, items of finish, furniture and decoration, are conceptual only and are not necessarily included in the Unit. For a correct representation of the items included in the Unit, see the Purchase Agreement. Stated dimensions shown hereon are approximate and are measured to the exterior face of exterior walls and to the center line of demising walls. This method of measurement varies from, and is larger than, the dimensions that would be determined by using the description and definition of the "Unit" set forth in the Declaration (which generally only includes the interior airspace between the perimeter walls and excludes interior structural components). Note that measurements of rooms set forth on this floor plan are generally taken at the greatest points of each given room (as if the room were a perfect rectangle), without regard for any cutouts. Accordingly, the area of the actual room will typically be smaller than the product obtained by multiplying the stated length times width. All dimensions are approximate and may vary with actual construction.





# SHORE CLUB

MIAMI BEACH

## NORTH TOWER

RESIDENCE TYPE T

UNIT N-707

FLOOR 7

1 BEDROOM + DEN

1 BATHROOM

INTERIOR

857 SQ FT 80 SQ M

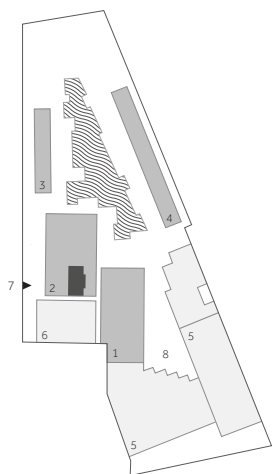
EXTERIOR

140 SQ FT 13 SQ M

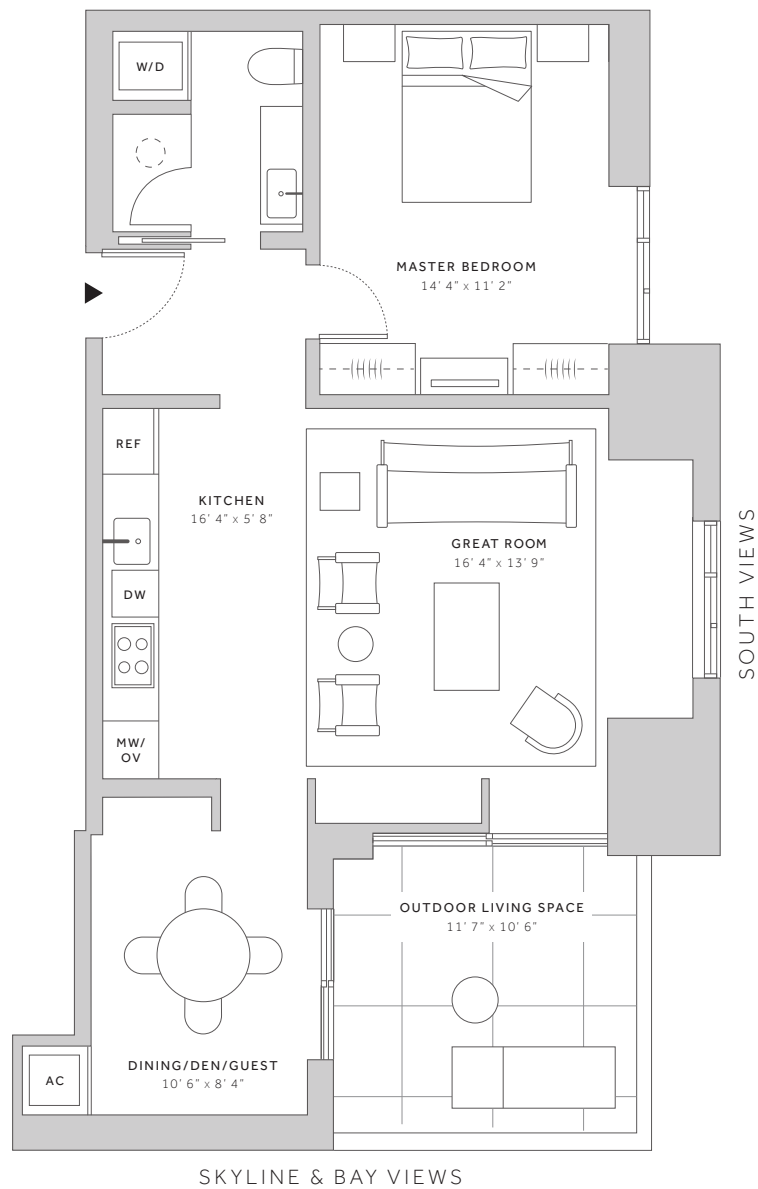
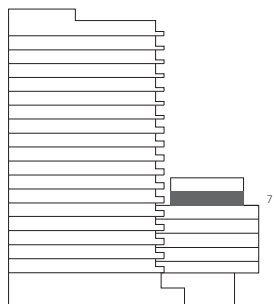
TOTAL

997 SQ FT 93 SQ M

▲ ATLANTIC OCEAN  
◀ N



- 1 - CENTRAL TOWER
- 2 - NORTH TOWER
- 3 - NORTH BEACH HOUSES
- 4 - SOUTH BEACH HOUSES
- 5 - HOTEL
- 6 - AMENITIES
- 7 - RESIDENTIAL LOBBY
- 8 - ENZO ENEA GARDEN



1901 COLLINS AVENUE MIAMI BEACH FLORIDA 33139

ORAL REPRESENTATIONS CANNOT BE RELIED UPON AS CORRECTLY STATING THE REPRESENTATIONS OF THE DEVELOPER. FOR CORRECT REPRESENTATIONS, MAKE REFERENCE TO THE DOCUMENTS REQUIRED BY SECTION 718.503, FLORIDA STATUTES, TO BE FURNISHED BY A DEVELOPER TO A BUYER OR LESSEE.

This is not intended to be an offer to sell, or solicitation to buy, condominium units to residents of any jurisdiction where prohibited by law, and your eligibility for purchase will depend upon your state of residency. This offering is made only by the prospectus for the condominium and no statement should be relied upon if not made in the prospectus. Depicted is an artist's rendering which is subject to change. All plans, features and specifications are subject to change without notice. All depictions of matters of detail shown hereon, including, without limitation, items of finish, furniture and decoration, are conceptual only and are not necessarily included in the Unit. For a correct representation of the items included in the Unit, see the Purchase Agreement. Stated dimensions shown hereon are approximate and are measured to the exterior face of exterior walls and to the center line of demising walls. This method of measurement varies from, and is larger than, the dimensions that would be determined by using the description and definition of the "Unit" set forth in the Declaration (which generally only includes the interior airspace between the perimeter walls and excludes interior structural components). Note that measurements of rooms set forth on this floor plan are generally taken at the greatest points of each given room (as if the room were a perfect rectangle), without regard for any cutouts. Accordingly, the area of the actual room will typically be smaller than the product obtained by multiplying the stated length times width. All dimensions are approximate and may vary with actual construction.



# SHORE CLUB

MIAMI BEACH

## NORTH TOWER

RESIDENCE TYPE U

UNIT N-708

FLOOR 7

1 BEDROOM

1.5 BATHROOMS

INTERIOR

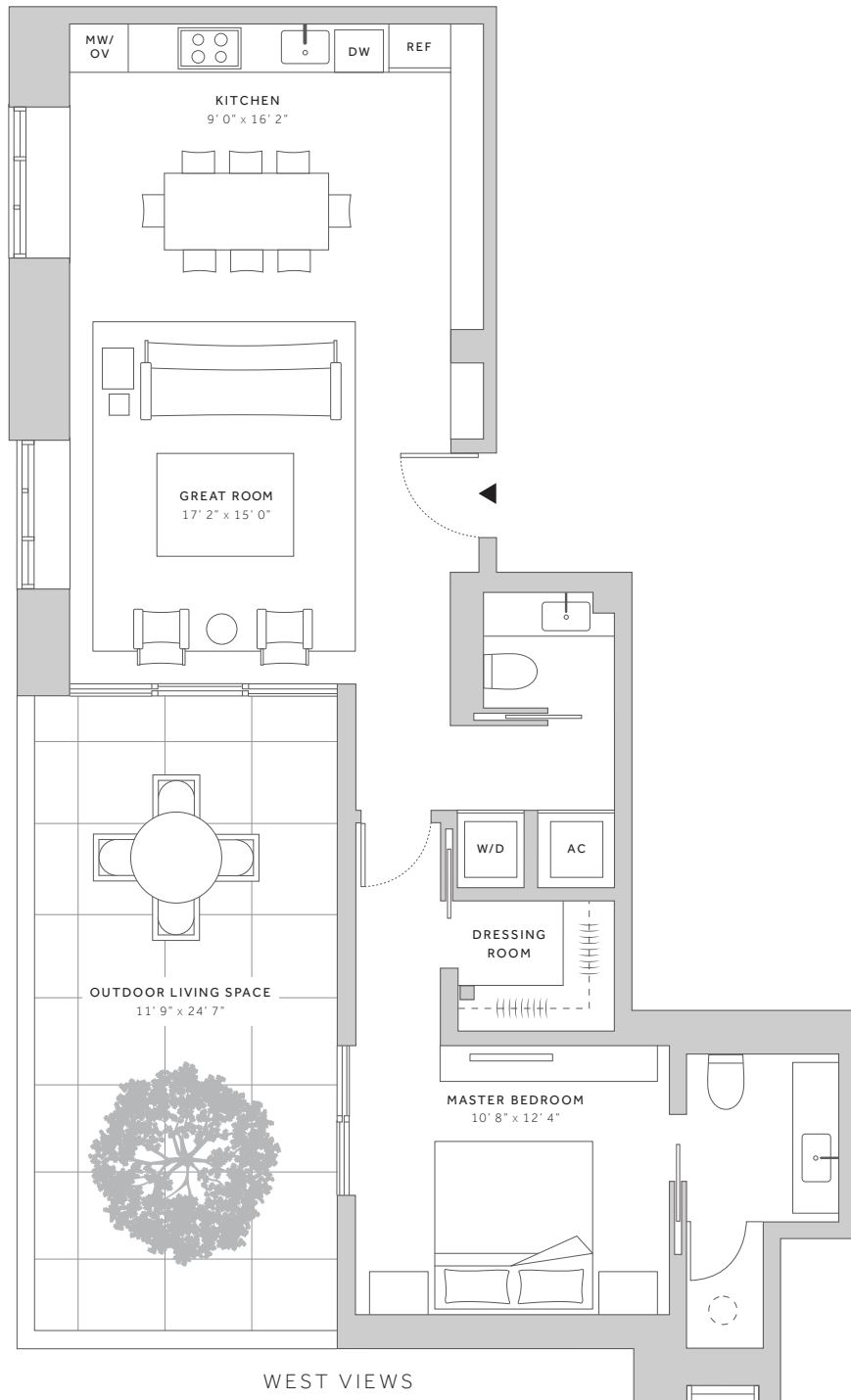
899 SQ FT 84 SQ M

EXTERIOR

316 SQ FT 29 SQ M

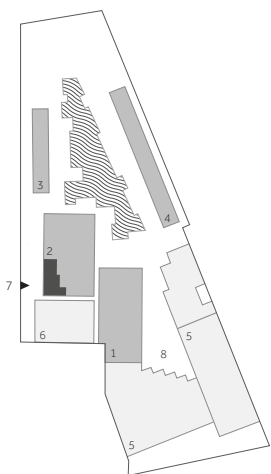
TOTAL

1,215 SQ FT 113 SQ M

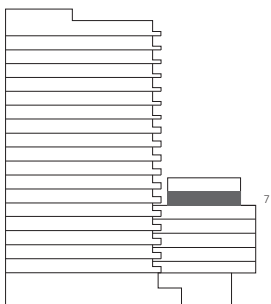


WEST VIEWS

▲ ATLANTIC OCEAN  
◀ N



- 1 - CENTRAL TOWER
- 2 - NORTH TOWER
- 3 - NORTH BEACH HOUSES
- 4 - SOUTH BEACH HOUSES
- 5 - HOTEL
- 6 - AMENITIES
- 7 - RESIDENTIAL LOBBY
- 8 - ENZO ENEA GARDEN



1901 COLLINS AVENUE MIAMI BEACH FLORIDA 33139

ORAL REPRESENTATIONS CANNOT BE RELIED UPON AS CORRECTLY STATING THE REPRESENTATIONS OF THE DEVELOPER. FOR CORRECT REPRESENTATIONS, MAKE REFERENCE TO THE DOCUMENTS REQUIRED BY SECTION 718.503, FLORIDA STATUTES, TO BE FURNISHED BY A DEVELOPER TO A BUYER OR LESSEE.

This is not intended to be an offer to sell, or solicitation to buy, condominium units to residents of any jurisdiction where prohibited by law, and your eligibility for purchase will depend upon your state of residency. This offering is made only by the prospectus for the condominium and no statement should be relied upon if not made in the prospectus. Depicted is an artist's rendering which is subject to change. All plans, features and specifications are subject to change without notice. All depictions of matters of detail shown hereon, including, without limitation, items of finish, furniture and decoration, are conceptual only and are not necessarily included in the Unit. For a correct representation of the items included in the Unit, see the Purchase Agreement. Stated dimensions shown hereon are approximate and are measured to the exterior face of exterior walls and to the center line of demising walls. This method of measurement varies from, and is larger than, the dimensions that would be determined by using the description and definition of the "Unit" set forth in the Declaration (which generally only includes the interior airspace between the perimeter walls and excludes interior structural components). Note that measurements of rooms set forth on this floor plan are generally taken at the greatest points of each given room (as if the room were a perfect rectangle), without regard for any cutouts. Accordingly, the area of the actual room will typically be smaller than the product obtained by multiplying the stated length times width. All dimensions are approximate and may vary with actual construction.



# SHORE CLUB

MIAMI BEACH

## NORTH TOWER

RESIDENCE TYPE PH2

PENTHOUSE 2

FLOOR 8

2 BEDROOMS

2.5 BATHROOMS

### INTERIOR

1,340 SQ FT 124 SQ M

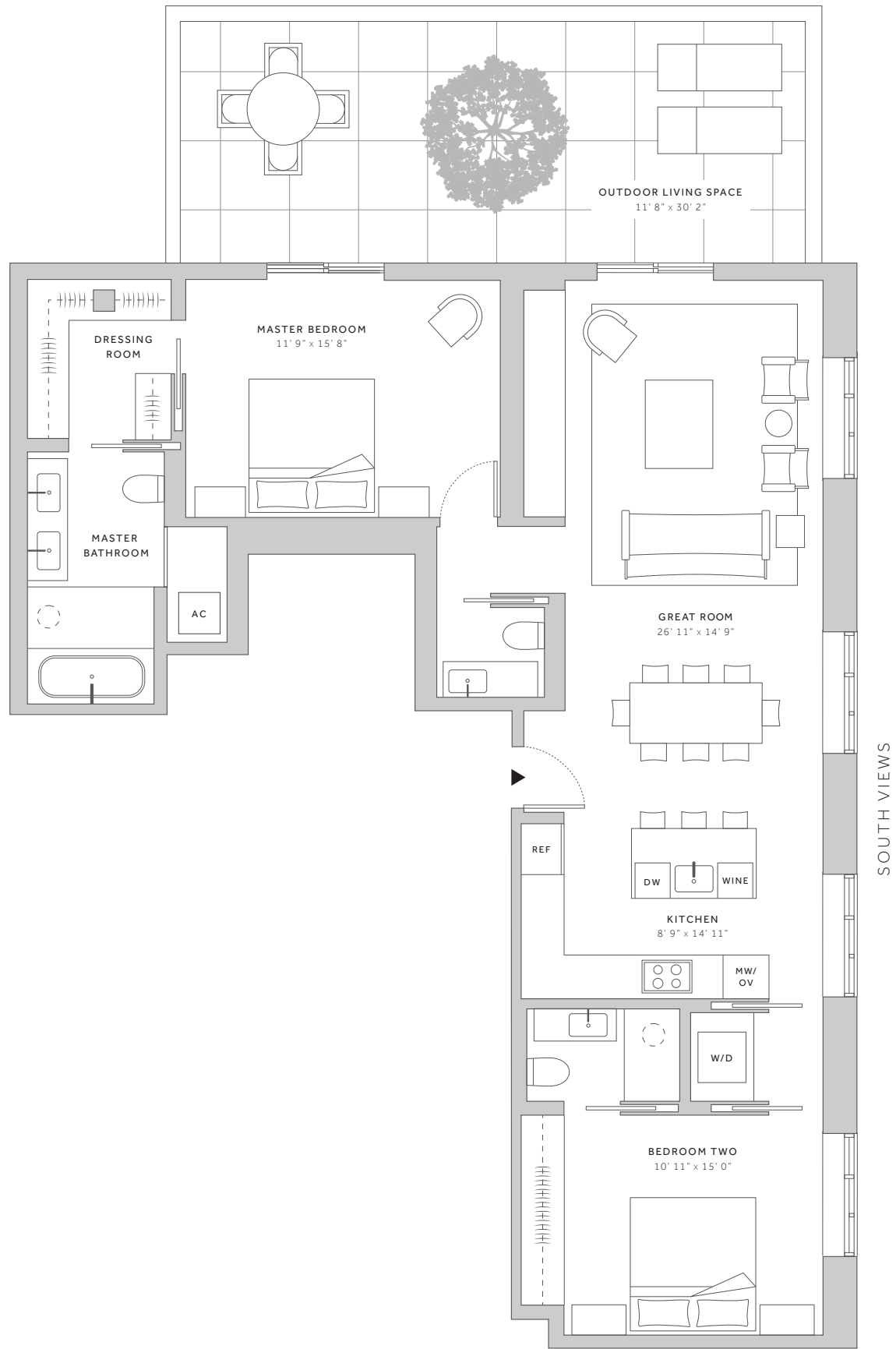
### EXTERIOR

400 SQ FT 37 SQ M

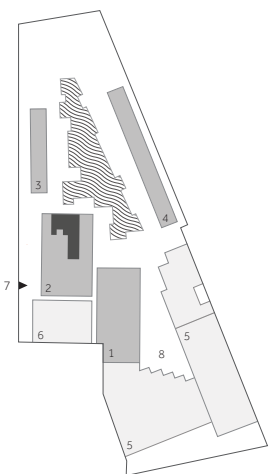
### TOTAL

1,740 SQ FT 158 SQ M

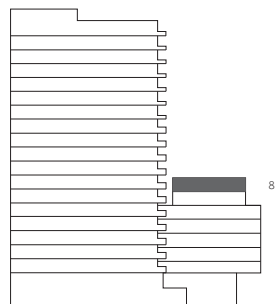
OCEAN VIEWS



▲ ATLANTIC OCEAN  
◀ N



- 1 - CENTRAL TOWER
- 2 - NORTH TOWER
- 3 - NORTH BEACH HOUSES
- 4 - SOUTH BEACH HOUSES
- 5 - HOTEL
- 6 - AMENITIES
- 7 - RESIDENTIAL LOBBY
- 8 - ENZO ENEA GARDEN



1901 COLLINS AVENUE

MIAMI BEACH FLORIDA 33139

ORAL REPRESENTATIONS CANNOT BE RELIED UPON AS CORRECTLY STATING THE REPRESENTATIONS OF THE DEVELOPER. FOR CORRECT REPRESENTATIONS, MAKE REFERENCE TO THE DOCUMENTS REQUIRED BY SECTION 718.503, FLORIDA STATUTES, TO BE FURNISHED BY A DEVELOPER TO A BUYER OR LESSEE.

This is not intended to be an offer to sell, or solicitation to buy, condominium units to residents of any jurisdiction where prohibited by law, and your eligibility for purchase will depend upon your state of residency. This offering is made only by the prospectus for the condominium and no statement should be relied upon if not made in the prospectus. Depicted is an artist's rendering which is subject to change. All plans, features and specifications are subject to change without notice. All depictions of matters of detail shown hereon, including, without limitation, items of finish, furniture and decoration, are conceptual only and are not necessarily included in the Unit. For a correct representation of the items included in the Unit, see the Purchase Agreement. Stated dimensions shown hereon are approximate and are measured to the exterior face of exterior walls and to the center line of demising walls. This method of measurement varies from, and is larger than, the dimensions that would be determined by using the description and definition of the "Unit" set forth in the Declaration (which generally only includes the interior airspace between the perimeter walls and excludes interior structural components). Note that measurements of rooms set forth on this floor plan are generally taken at the greatest points of each given room (as if the room were a perfect rectangle), without regard for any cutouts. Accordingly, the area of the actual room will typically be smaller than the product obtained by multiplying the stated length times width. All dimensions are approximate and may vary with actual construction.



# SHORE CLUB

MIAMI BEACH

## NORTH TOWER

RESIDENCE TYPE PH3

PENTHOUSE 3

FLOOR 8

1 BEDROOM

1.5 BATHROOMS

INTERIOR

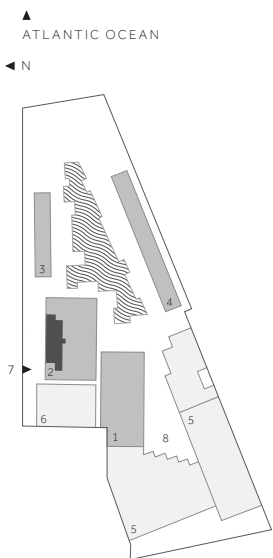
1,048 SQ FT 97 SQ M

EXTERIOR

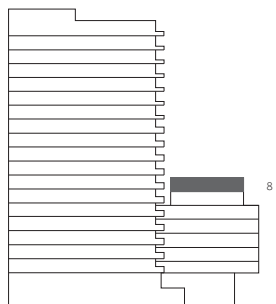
651 SQ FT 61 SQ M

TOTAL

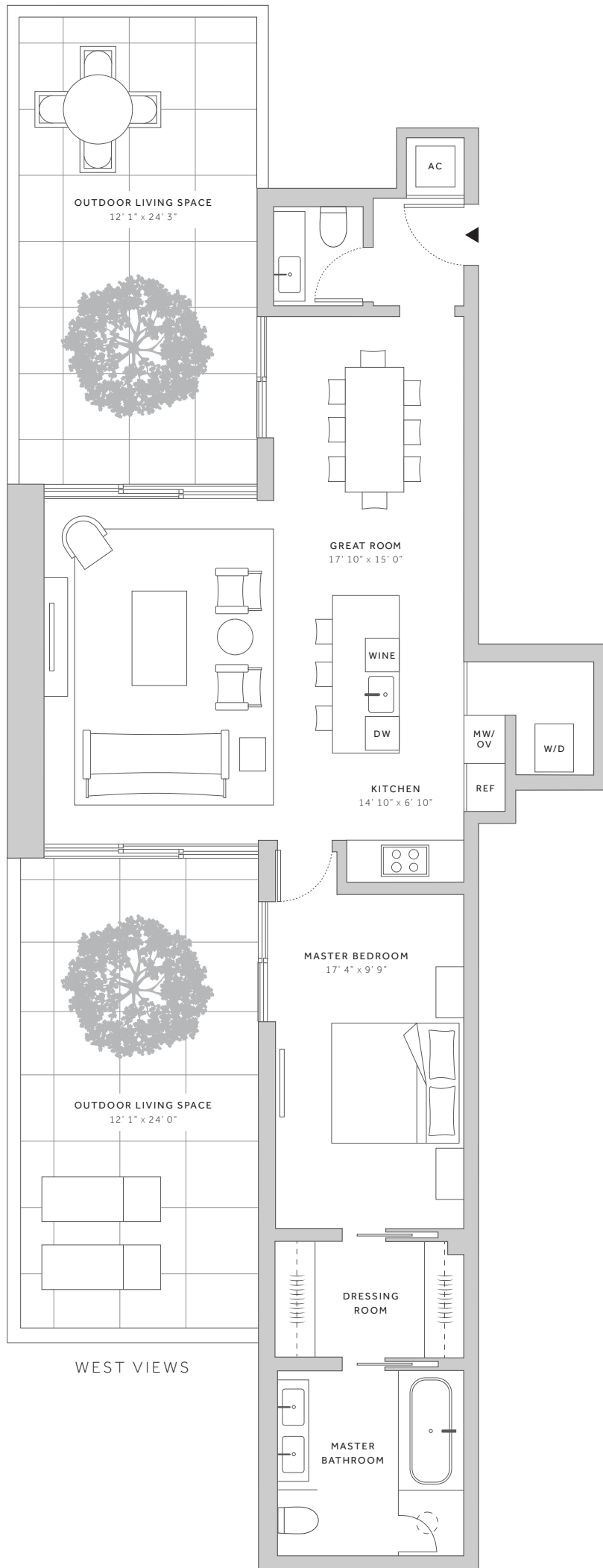
1,699 SQ FT 158 SQ M



- 1 - CENTRAL TOWER
- 2 - NORTH TOWER
- 3 - NORTH BEACH HOUSES
- 4 - SOUTH BEACH HOUSES
- 5 - HOTEL
- 6 - AMENITIES
- 7 - RESIDENTIAL LOBBY
- 8 - ENZO ENEA GARDEN



OCEAN VIEWS



WEST VIEWS



1901 COLLINS AVENUE

MIAMI BEACH FLORIDA 33139

ORAL REPRESENTATIONS CANNOT BE RELIED UPON AS CORRECTLY STATING THE REPRESENTATIONS OF THE DEVELOPER. FOR CORRECT REPRESENTATIONS, MAKE REFERENCE TO THE DOCUMENTS REQUIRED BY SECTION 718.503, FLORIDA STATUTES, TO BE FURNISHED BY A DEVELOPER TO A BUYER OR LESSEE.

This is not intended to be an offer to sell, or solicitation to buy, condominium units to residents of any jurisdiction where prohibited by law, and your eligibility for purchase will depend upon your state of residency. This offering is made only by the prospectus for the condominium and no statement should be relied upon if not made in the prospectus. Depicted is an artist's rendering which is subject to change. All plans, features and specifications are subject to change without notice. All depictions of matters of detail shown hereon, including, without limitation, items of finish, furniture and decoration, are conceptual only and are not necessarily included in the Unit. For a correct representation of the items included in the Unit, see the Purchase Agreement. Stated dimensions shown hereon are approximate and measured to the exterior face of exterior walls and to the center line of demising walls. This method of measurement varies from, and is larger than, the dimensions that would be determined by using the description and definition of the "Unit" set forth in the Declaration (which generally only includes the interior airspace between the perimeter walls and excludes interior structural components). Note that measurements of rooms set forth on this floor plan are generally taken at the greatest points of each given room (as if the room were a perfect rectangle), without regard for any cutouts. Accordingly, the area of the actual room will typically be smaller than the product obtained by multiplying the stated length times width. All dimensions are approximate and may vary with actual construction.



# SHORE CLUB

MIAMI BEACH

## NORTH TOWER

RESIDENCE TYPE PH4

PENTHOUSE 4

FLOOR 8

1 BEDROOM

1 BATHROOM

### INTERIOR

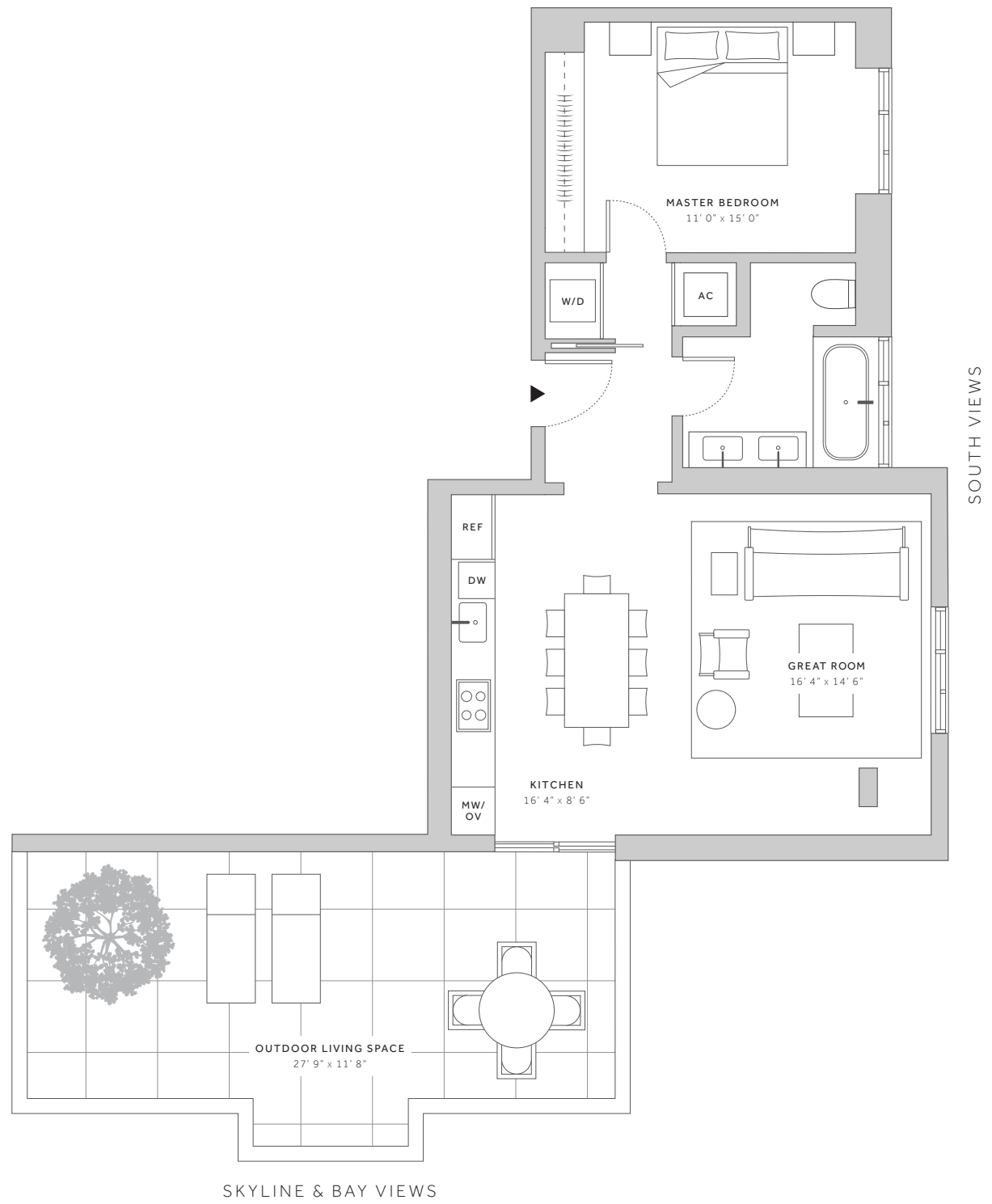
804 SQ FT 75 SQ M

### EXTERIOR

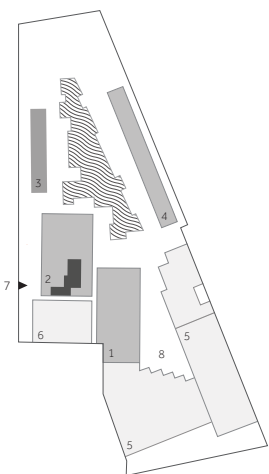
387 SQ FT 36 SQ M

### TOTAL

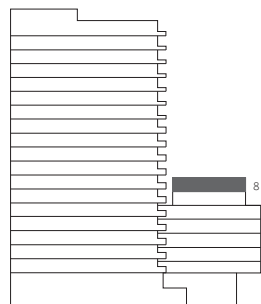
1,191 SQ FT 111 SQ M



▲ ATLANTIC OCEAN  
◀ N



- 1 - CENTRAL TOWER
- 2 - NORTH TOWER
- 3 - NORTH BEACH HOUSES
- 4 - SOUTH BEACH HOUSES
- 5 - HOTEL
- 6 - AMENITIES
- 7 - RESIDENTIAL LOBBY
- 8 - ENZO ENEA GARDEN



1901 COLLINS AVENUE

MIAMI BEACH FLORIDA 33139

ORAL REPRESENTATIONS CANNOT BE RELIED UPON AS CORRECTLY STATING THE REPRESENTATIONS OF THE DEVELOPER. FOR CORRECT REPRESENTATIONS, MAKE REFERENCE TO THE DOCUMENTS REQUIRED BY SECTION 718.503, FLORIDA STATUTES, TO BE FURNISHED BY A DEVELOPER TO A BUYER OR LESSEE.

This is not intended to be an offer to sell, or solicitation to buy, condominium units to residents of any jurisdiction where prohibited by law, and your eligibility for purchase will depend upon your state of residency. This offering is made only by the prospectus for the condominium and no statement should be relied upon if not made in the prospectus. Depicted is an artist's rendering which is subject to change. All plans, features and specifications are subject to change without notice. All depictions of matters of detail shown hereon, including, without limitation, items of finish, furniture and decoration, are conceptual only and are not necessarily included in the Unit. For a correct representation of the items included in the Unit, see the Purchase Agreement. Stated dimensions shown hereon are approximate and are measured to the exterior face of exterior walls and to the center line of demising walls. This method of measurement varies from, and is larger than, the dimensions that would be determined by using the description and definition of the "Unit" set forth in the Declaration (which generally only includes the interior airspace between the perimeter walls and excludes interior structural components). Note that measurements of rooms set forth on this floor plan are generally taken at the greatest points of each given room (as if the room were a perfect rectangle), without regard for any cutouts. Accordingly, the area of the actual room will typically be smaller than the product obtained by multiplying the stated length times width. All dimensions are approximate and may vary with actual construction.

