

SHORE CLUB

MIAMI BEACH

NORTH BEACH HOUSE 1

RESIDENCE TYPE BH1

FLOOR 1

1 BEDROOM

2.5 BATHROOMS

INTERIOR

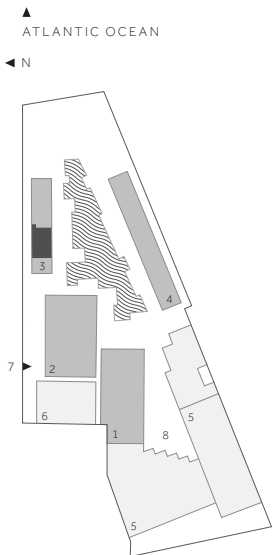
1,238 SQ FT 115 SQ M

EXTERIOR

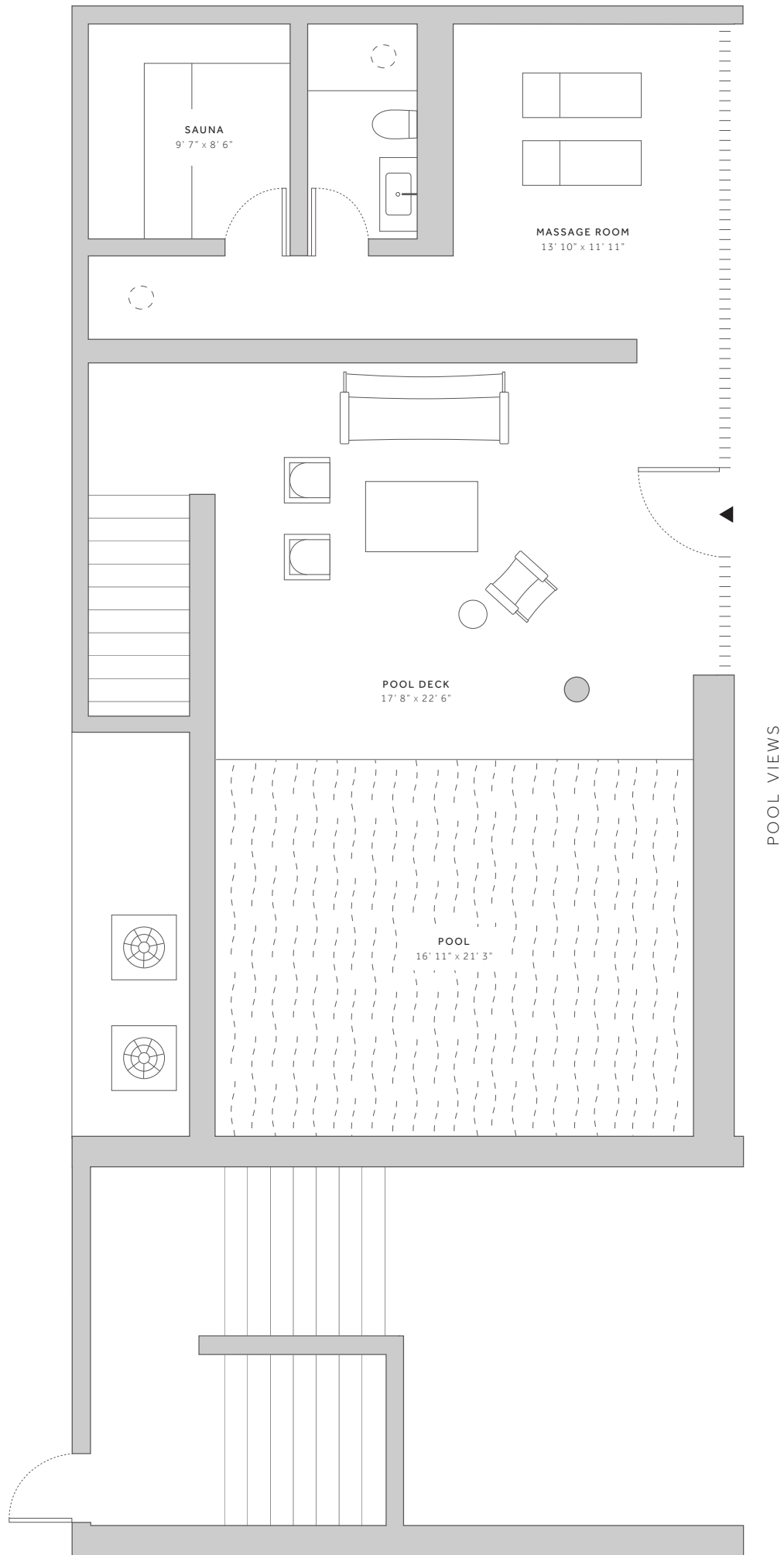
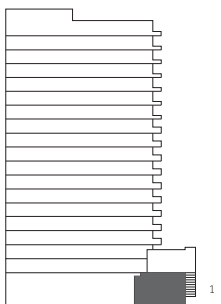
1,364 SQ FT 127 SQ M

TOTAL

2,602 SQ FT 242 SQ M



- 1 - CENTRAL TOWER
- 2 - NORTH TOWER
- 3 - NORTH BEACH HOUSES
- 4 - SOUTH BEACH HOUSES
- 5 - HOTEL
- 6 - AMENITIES
- 7 - RESIDENTIAL LOBBY
- 8 - ENZO ENEA GARDEN



ORAL REPRESENTATIONS CANNOT BE RELIED UPON AS CORRECTLY STATING THE REPRESENTATIONS OF THE DEVELOPER. FOR CORRECT REPRESENTATIONS, MAKE REFERENCE TO THE DOCUMENTS REQUIRED BY SECTION 718.503, FLORIDA STATUTES, TO BE FURNISHED BY A DEVELOPER TO A BUYER OR LESSEE.

This is not intended to be an offer to sell, or solicitation to buy, condominium units to residents of any jurisdiction where prohibited by law, and your eligibility for purchase will depend upon your state of residency. This offering is made only by the prospectus for the condominium and no statement should be relied upon if not made in the prospectus. Depicted is an artist's rendering which is subject to change. All plans, features and specifications are subject to change without notice. All depictions of matters of detail shown hereon, including, without limitation, items of finish, furniture and decoration, are conceptual only and are not necessarily included in the Unit. For a correct representation of the items included in the Unit, see the Purchase Agreement. Stated dimensions shown hereon are approximate and are measured to the exterior face of exterior walls and to the center line of demising walls. This method of measurement varies from, and is larger than, the dimensions that would be determined by using the description and definition of the "Unit" set forth in the Declaration (which generally only includes the interior airspace between the perimeter walls and excludes interior structural components). Note that measurements of rooms set forth on this floor plan are generally taken at the greatest points of each given room (as if the room were a perfect rectangle), without regard for any cutouts. Accordingly, the area of the actual room will typically be smaller than the product obtained by multiplying the stated length times width. All dimensions are approximate and may vary with actual construction.



SHORE CLUB

MIAMI BEACH

NORTH BEACH HOUSE 1

RESIDENCE TYPE BH1

FLOOR 2

1 BEDROOM

2.5 BATHROOMS

INTERIOR

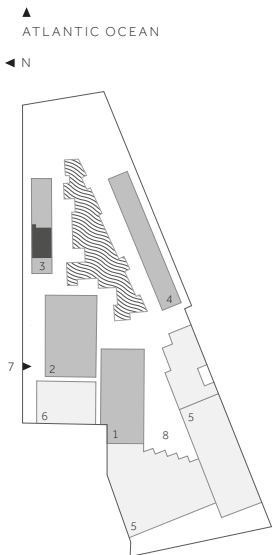
1,238 SQ FT 115 SQ M

EXTERIOR

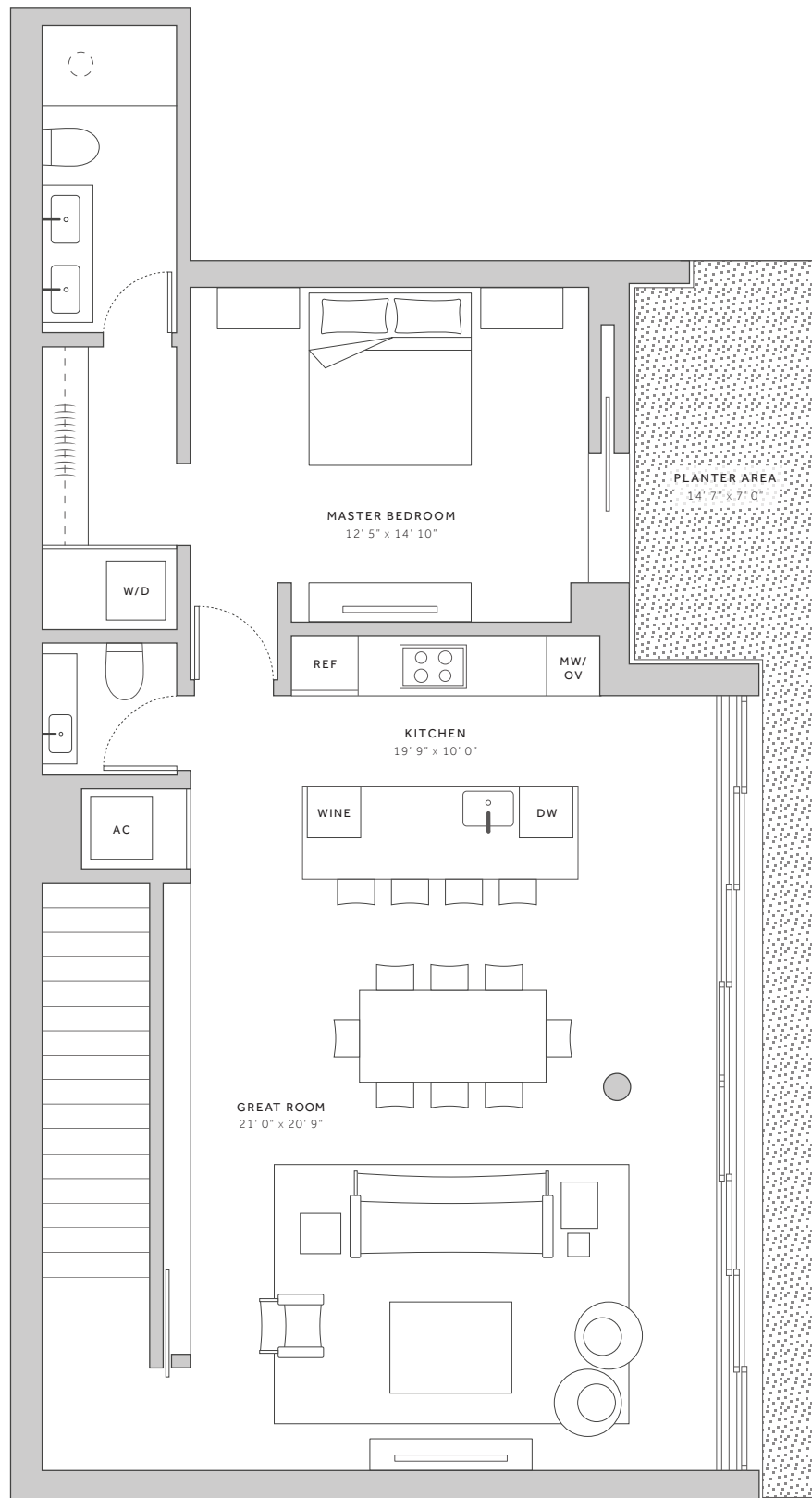
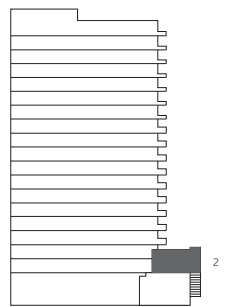
1,364 SQ FT 127 SQ M

TOTAL

2,602 SQ FT 242 SQ M



- 1 - CENTRAL TOWER
- 2 - NORTH TOWER
- 3 - NORTH BEACH HOUSES
- 4 - SOUTH BEACH HOUSES
- 5 - HOTEL
- 6 - AMENITIES
- 7 - RESIDENTIAL LOBBY
- 8 - ENZO ENEA GARDEN



POOL VIEWS



1901 COLLINS AVENUE

MIAMI BEACH FLORIDA 33139

ORAL REPRESENTATIONS CANNOT BE RELIED UPON AS CORRECTLY STATING THE REPRESENTATIONS OF THE DEVELOPER. FOR CORRECT REPRESENTATIONS, MAKE REFERENCE TO THE DOCUMENTS REQUIRED BY SECTION 718.503, FLORIDA STATUTES, TO BE FURNISHED BY A DEVELOPER TO A BUYER OR LESSEE.

This is not intended to be an offer to sell, or solicitation to buy, condominium units to residents of any jurisdiction where prohibited by law, and your eligibility for purchase will depend upon your state of residency. This offering is made only by the prospectus for the condominium and no statement should be relied upon if not made in the prospectus. Depicted is an artist's rendering which is subject to change. All plans, features and specifications are subject to change without notice. All depictions of matters of detail shown hereon, including, without limitation, items of finish, furniture and decoration, are conceptual only and are not necessarily included in the Unit. For a correct representation of the items included in the Unit, see the Purchase Agreement. Stated dimensions shown hereon are approximate and are measured to the exterior face of exterior walls and to the center line of demising walls. This method of measurement varies from, and is larger than, the dimensions that would be determined by using the description and definition of the "Unit" set forth in the Declaration (which generally only includes the interior airspace between the perimeter walls and excludes interior structural components). Note that measurements of rooms set forth on this floor plan are generally taken at the greatest points of each given room (as if the room were a perfect rectangle), without regard for any cutouts. Accordingly, the area of the actual room will typically be smaller than the product obtained by multiplying the stated length times width. All dimensions are approximate and may vary with actual construction.



SHORE CLUB

MIAMI BEACH

NORTH BEACH HOUSE 2
RESIDENCE TYPE BH2

FLOOR 1

2 BEDROOMS

2 BATHROOMS

3 HALF BATHROOMS

INTERIOR

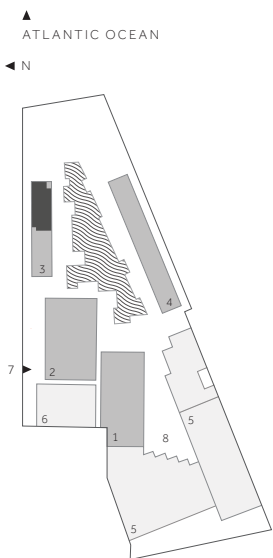
1,737 SQ FT 161 SQ M

EXTERIOR

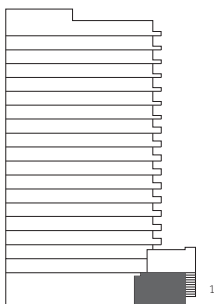
2,437 SQ FT 226 SQ M

TOTAL

4,174 SQ FT 387 SQ M



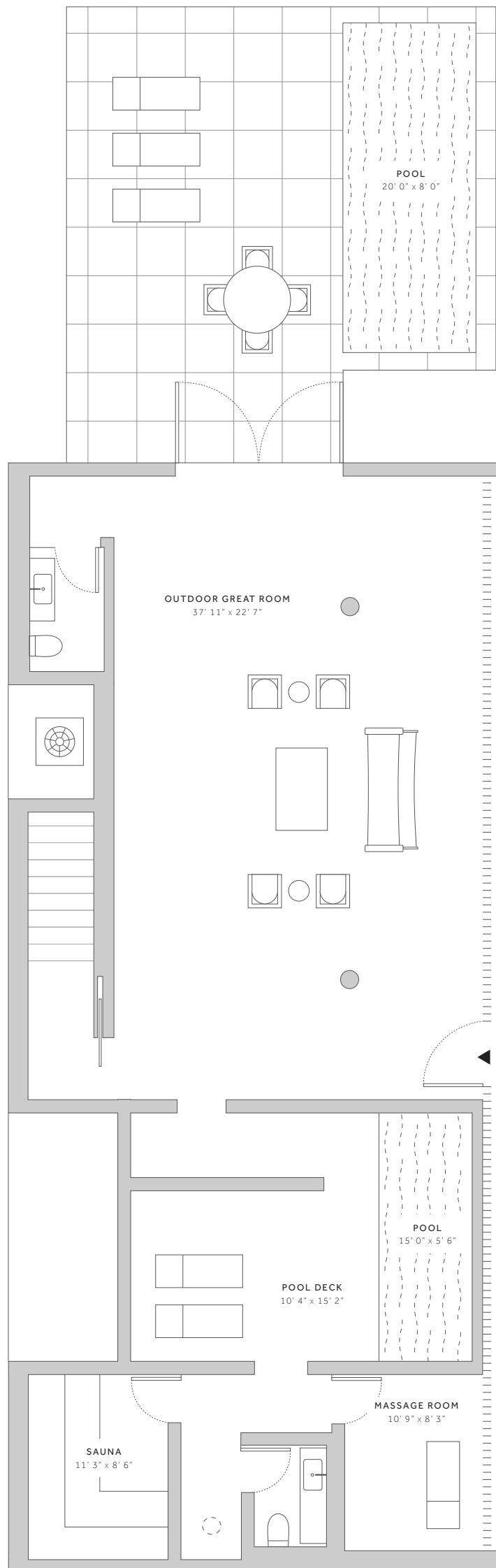
- 1 - CENTRAL TOWER
- 2 - NORTH TOWER
- 3 - NORTH BEACH HOUSES
- 4 - SOUTH BEACH HOUSES
- 5 - HOTEL
- 6 - AMENITIES
- 7 - RESIDENTIAL LOBBY
- 8 - ENZO ENEA GARDEN



1901 COLLINS AVENUE

MIAMI BEACH FLORIDA 33139

OCEAN VIEWS



ORAL REPRESENTATIONS CANNOT BE RELIED UPON AS CORRECTLY STATING THE REPRESENTATIONS OF THE DEVELOPER. FOR CORRECT REPRESENTATIONS, MAKE REFERENCE TO THE DOCUMENTS REQUIRED BY SECTION 718.503, FLORIDA STATUTES, TO BE FURNISHED BY A DEVELOPER TO A BUYER OR LESSEE.

This is not intended to be an offer to sell, or solicitation to buy, condominium units to residents of any jurisdiction where prohibited by law, and your eligibility for purchase will depend upon your state of residency. This offering is made only by the prospectus for the condominium and no statement should be relied upon if not made in the prospectus. Depicted is an artist's rendering which is subject to change. All plans, features and specifications are subject to change without notice. All depictions of matters of detail shown hereon, including, without limitation, items of finish, furniture and decoration, are conceptual only and are not necessarily included in the Unit. For a correct representation of the items included in the Unit, see the Purchase Agreement. Stated dimensions shown hereon are approximate and are measured to the exterior face of exterior walls and to the center line of demising walls. This method of measurement varies from, and is larger than, the dimensions that would be determined by using the description and definition of the "Unit" set forth in the Declaration (which generally only includes the interior airspace between the perimeter walls and excludes interior structural components). Note that measurements of rooms set forth on this floor plan are generally taken at the greatest points of each given room (as if the room were a perfect rectangle), without regard for any cutouts. Accordingly, the area of the actual room will typically be smaller than the product obtained by multiplying the stated length times width. All dimensions are approximate and may vary with actual construction.



SHORE CLUB

MIAMI BEACH

NORTH BEACH HOUSE 2
RESIDENCE TYPE BH2

FLOOR 2

2 BEDROOMS

2 BATHROOMS

3 HALF BATHROOMS

INTERIOR

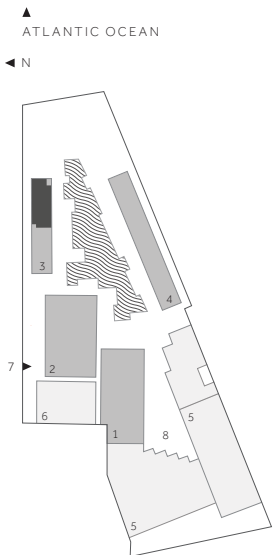
1,737 SQ FT 161 SQ M

EXTERIOR

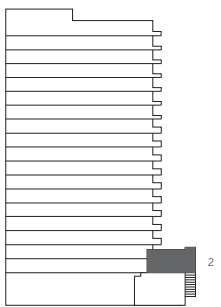
2,437 SQ FT 226 SQ M

TOTAL

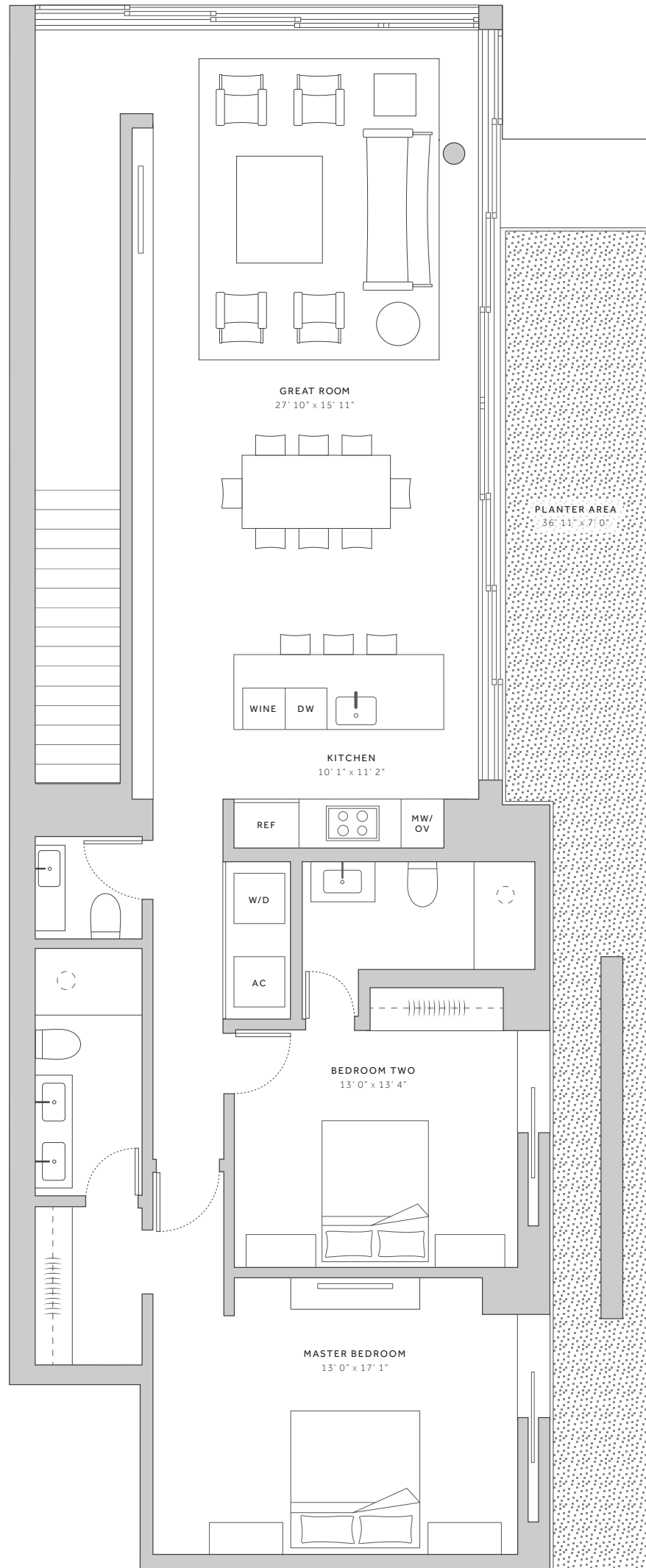
4,174 SQ FT 387 SQ M



- 1 - CENTRAL TOWER
- 2 - NORTH TOWER
- 3 - NORTH BEACH HOUSES
- 4 - SOUTH BEACH HOUSES
- 5 - HOTEL
- 6 - AMENITIES
- 7 - RESIDENTIAL LOBBY
- 8 - ENZO ENEA GARDEN



OCEAN VIEWS



POOL VIEWS



ORAL REPRESENTATIONS CANNOT BE RELIED UPON AS CORRECTLY STATING THE REPRESENTATIONS OF THE DEVELOPER. FOR CORRECT REPRESENTATIONS, MAKE REFERENCE TO THE DOCUMENTS REQUIRED BY SECTION 718.503, FLORIDA STATUTES, TO BE FURNISHED BY A DEVELOPER TO A BUYER OR LESSEE.

This is not intended to be an offer to sell, or solicitation to buy, condominium units to residents of any jurisdiction where prohibited by law, and your eligibility for purchase will depend upon your state of residency. This offering is made only by the prospectus for the condominium and no statement should be relied upon if not made in the prospectus. Depicted is an artist's rendering which is subject to change. All plans, features and specifications are subject to change without notice. All depictions of matters of detail shown hereon, including, without limitation, items of finish, furniture and decoration, are conceptual only and are not necessarily included in the Unit. For a correct representation of the items included in the Unit, see the Purchase Agreement. Stated dimensions shown hereon are approximate and are measured to the exterior face of exterior walls and to the center line of demising walls. This method of measurement varies from, and is larger than, the dimensions that would be determined by using the description and definition of the "Unit" set forth in the Declaration (which generally only includes the interior airspace between the perimeter walls and excludes interior structural components). Note that measurements of rooms set forth on this floor plan are generally taken at the greatest points of each given room (as if the room were a perfect rectangle), without regard for any cutouts. Accordingly, the area of the actual room will typically be smaller than the product obtained by multiplying the stated length times width. All dimensions are approximate and may vary with actual construction.



SHORE CLUB

MIAMI BEACH

SOUTH BEACH HOUSE 3

RESIDENCE TYPE BH3

FLOOR 1

1 BEDROOM

2.5 BATHROOMS

INTERIOR

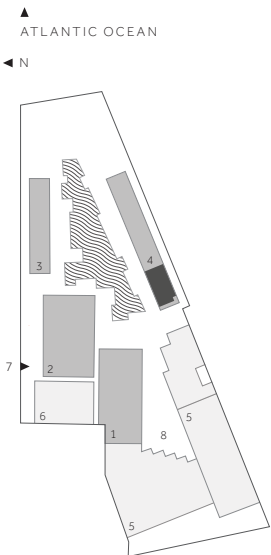
1,308 SQ FT 121 SQ M

EXTERIOR

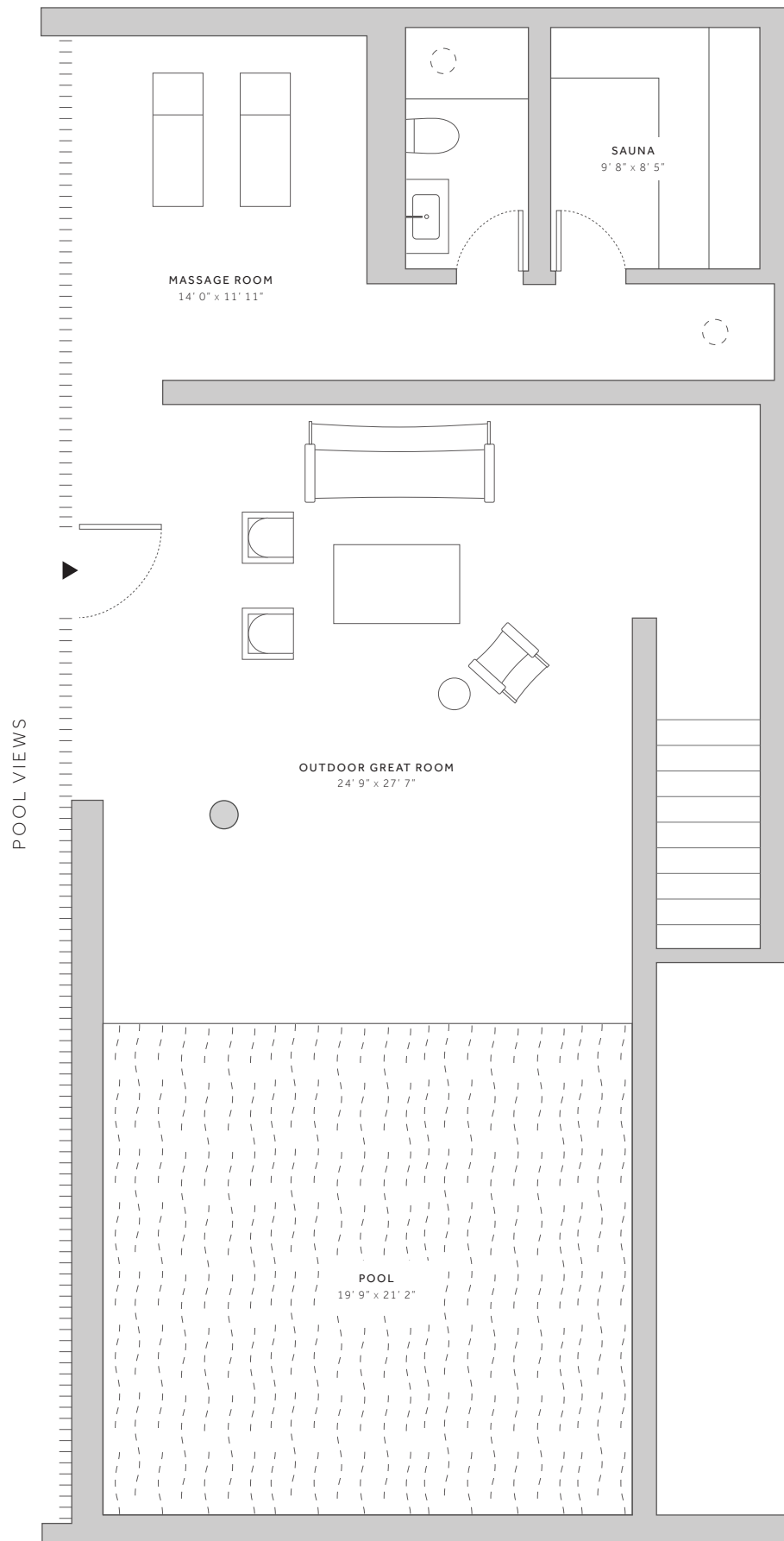
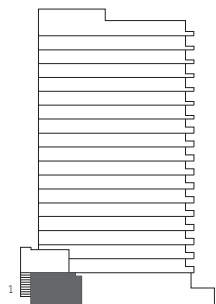
1,678 SQ FT 156 SQ M

TOTAL

2,986 SQ FT 277 SQ M



- 1 - CENTRAL TOWER
- 2 - NORTH TOWER
- 3 - NORTH BEACH HOUSES
- 4 - SOUTH BEACH HOUSES
- 5 - HOTEL
- 6 - AMENITIES
- 7 - RESIDENTIAL LOBBY
- 8 - ENZO ENEA GARDEN



ORAL REPRESENTATIONS CANNOT BE RELIED UPON AS CORRECTLY STATING THE REPRESENTATIONS OF THE DEVELOPER. FOR CORRECT REPRESENTATIONS, MAKE REFERENCE TO THE DOCUMENTS REQUIRED BY SECTION 718.503, FLORIDA STATUTES, TO BE FURNISHED BY A DEVELOPER TO A BUYER OR LESSEE.

This is not intended to be an offer to sell, or solicitation to buy, condominium units to residents of any jurisdiction where prohibited by law, and your eligibility for purchase will depend upon your state of residency. This offering is made only by the prospectus for the condominium and no statement should be relied upon if not made in the prospectus. Depicted is an artist's rendering which is subject to change. All plans, features and specifications are subject to change without notice. All depictions of matters of detail shown hereon, including, without limitation, items of finish, furniture and decoration, are conceptual only and are not necessarily included in the Unit. For a correct representation of the items included in the Unit, see the Purchase Agreement. Stated dimensions shown hereon are approximate and are measured to the exterior face of exterior walls and to the center line of demising walls. This method of measurement varies from, and is larger than, the dimensions that would be determined by using the description and definition of the "Unit" set forth in the Declaration (which generally only includes the interior airspace between the perimeter walls and excludes interior structural components). Note that measurements of rooms set forth on this floor plan are generally taken at the greatest points of each given room (as if the room were a perfect rectangle), without regard for any cutouts. Accordingly, the area of the actual room will typically be smaller than the product obtained by multiplying the stated length times width. All dimensions are approximate and may vary with actual construction.



SHORE CLUB

MIAMI BEACH

SOUTH BEACH HOUSE 3

RESIDENCE TYPE BH3

FLOOR 2

1 BEDROOM

2.5 BATHROOMS

INTERIOR

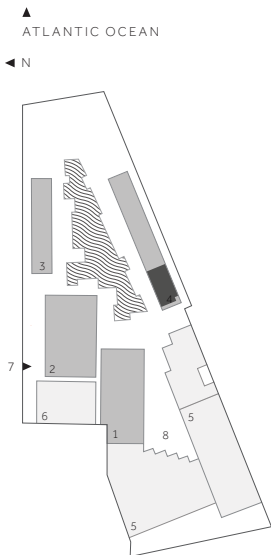
1,308 SQ FT 121 SQ M

EXTERIOR

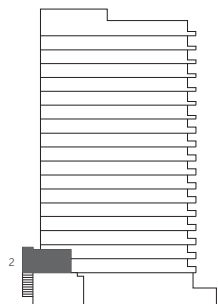
1,678 SQ FT 156 SQ M

TOTAL

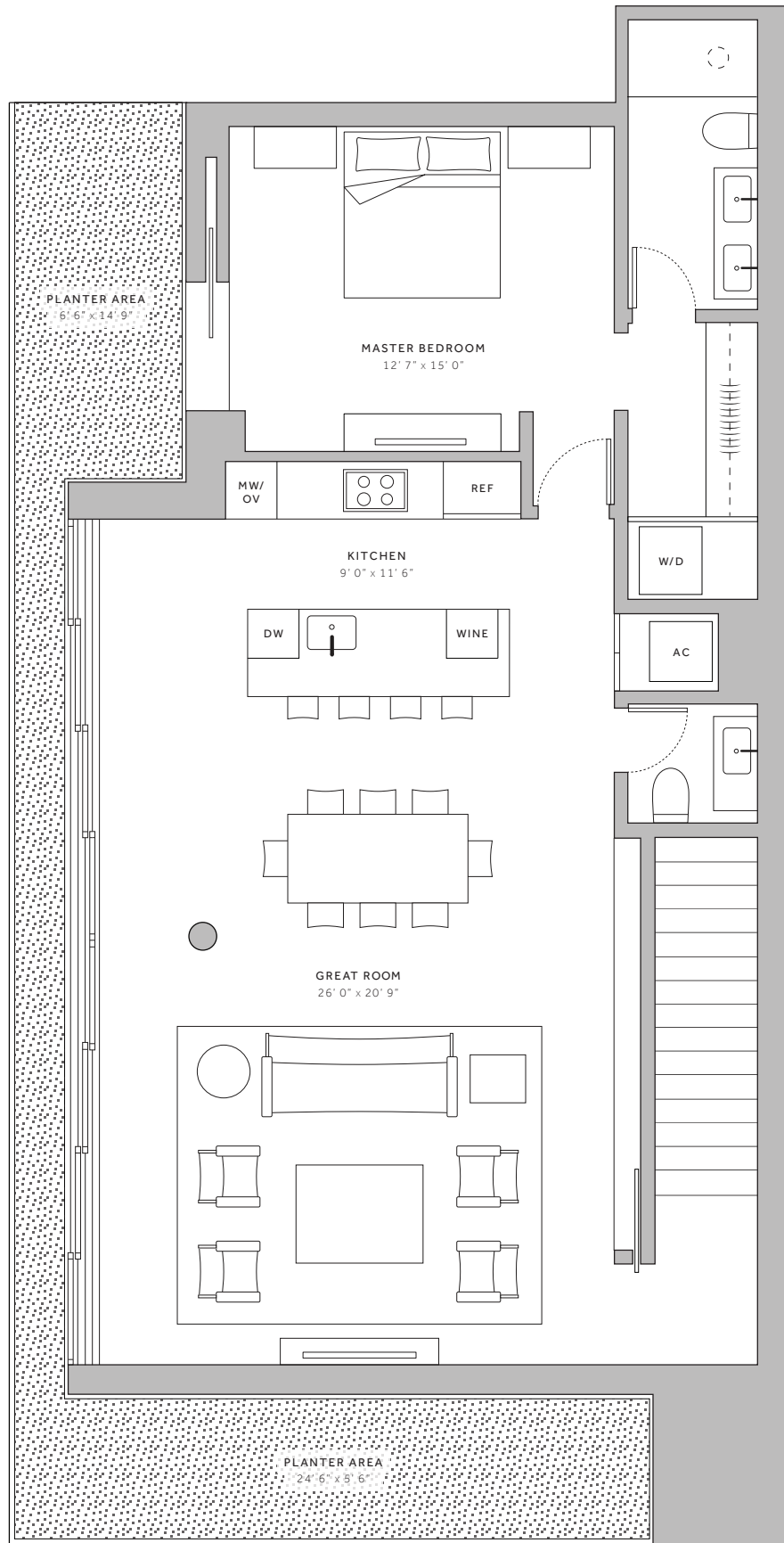
2,986 SQ FT 277 SQ M



- 1 - CENTRAL TOWER
- 2 - NORTH TOWER
- 3 - NORTH BEACH HOUSES
- 4 - SOUTH BEACH HOUSES
- 5 - HOTEL
- 6 - AMENITIES
- 7 - RESIDENTIAL LOBBY
- 8 - ENZO ENEA GARDEN



POOL VIEWS



ORAL REPRESENTATIONS CANNOT BE RELIED UPON AS CORRECTLY STATING THE REPRESENTATIONS OF THE DEVELOPER. FOR CORRECT REPRESENTATIONS, MAKE REFERENCE TO THE DOCUMENTS REQUIRED BY SECTION 718.503, FLORIDA STATUTES, TO BE FURNISHED BY A DEVELOPER TO A BUYER OR LESSEE.

This is not intended to be an offer to sell, or solicitation to buy, condominium units to residents of any jurisdiction where prohibited by law, and your eligibility for purchase will depend upon your state of residency. This offering is made only by the prospectus for the condominium and no statement should be relied upon if not made in the prospectus. Depicted is an artist's rendering which is subject to change. All plans, features and specifications are subject to change without notice. All depictions of matters of detail shown hereon, including, without limitation, items of finish, furniture and decoration, are conceptual only and are not necessarily included in the Unit. For a correct representation of the items included in the Unit, see the Purchase Agreement. Stated dimensions shown hereon are approximate and are measured to the exterior face of exterior walls and to the center line of demising walls. This method of measurement varies from, and is larger than, the dimensions that would be determined by using the description and definition of the "Unit" set forth in the Declaration (which generally only includes the interior airspace between the perimeter walls and excludes interior structural components). Note that measurements of rooms set forth on this floor plan are generally taken at the greatest points of each given room (as if the room were a perfect rectangle), without regard for any cutouts. Accordingly, the area of the actual room will typically be smaller than the product obtained by multiplying the stated length times width. All dimensions are approximate and may vary with actual construction.



SHORE CLUB

MIAMI BEACH

SOUTH BEACH HOUSE 4

RESIDENCE TYPE BH4

FLOOR 1

2 BEDROOMS

2 BATHROOMS

2 HALF BATHROOMS

INTERIOR

1,626 SQ FT 151 SQ M

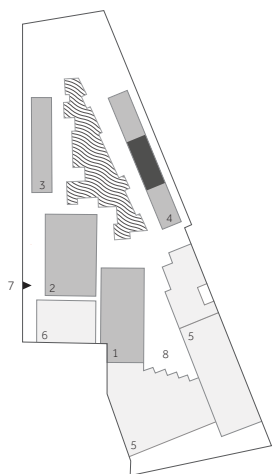
EXTERIOR

1,835 SQ FT 170 SQ M

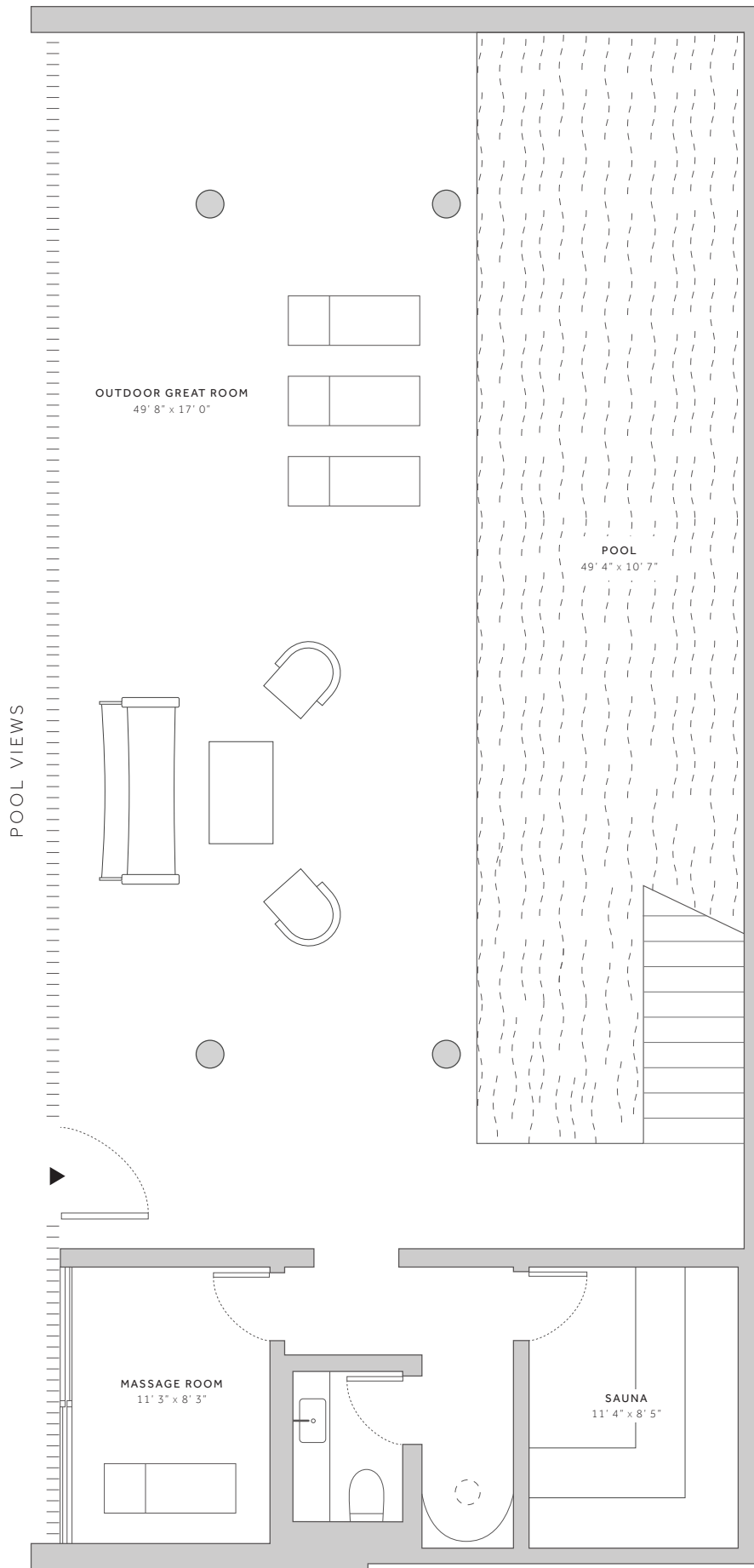
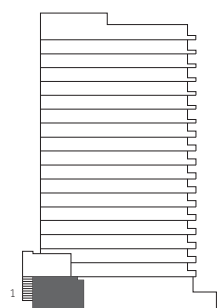
TOTAL

3,461 SQ FT 321 SQ M

▲ ATLANTIC OCEAN
◀ N



- 1 - CENTRAL TOWER
- 2 - NORTH TOWER
- 3 - NORTH BEACH HOUSES
- 4 - SOUTH BEACH HOUSES
- 5 - HOTEL
- 6 - AMENITIES
- 7 - RESIDENTIAL LOBBY
- 8 - ENZO ENEA GARDEN



1901 COLLINS AVENUE

MIAMI BEACH FLORIDA 33139

ORAL REPRESENTATIONS CANNOT BE RELIED UPON AS CORRECTLY STATING THE REPRESENTATIONS OF THE DEVELOPER. FOR CORRECT REPRESENTATIONS, MAKE REFERENCE TO THE DOCUMENTS REQUIRED BY SECTION 718.503, FLORIDA STATUTES, TO BE FURNISHED BY A DEVELOPER TO A BUYER OR LESSEE.

This is not intended to be an offer to sell, or solicitation to buy, condominium units to residents of any jurisdiction where prohibited by law, and your eligibility for purchase will depend upon your state of residency. This offering is made only by the prospectus for the condominium and no statement should be relied upon if not made in the prospectus. Depicted is an artist's rendering which is subject to change. All plans, features and specifications are subject to change without notice. All depictions of matters of detail shown hereon, including, without limitation, items of finish, furniture and decoration, are conceptual only and are not necessarily included in the Unit. For a correct representation of the items included in the Unit, see the Purchase Agreement. Stated dimensions shown hereon are approximate and are measured to the exterior face of exterior walls and to the center line of demising walls. This method of measurement varies from, and is larger than, the dimensions that would be determined by using the description and definition of the "Unit" set forth in the Declaration (which generally only includes the interior airspace between the perimeter walls and excludes interior structural components). Note that measurements of rooms set forth on this floor plan are generally taken at the greatest points of each given room (as if the room were a perfect rectangle), without regard for any cutouts. Accordingly, the area of the actual room will typically be smaller than the product obtained by multiplying the stated length times width. All dimensions are approximate and may vary with actual construction.



SHORE CLUB

MIAMI BEACH

SOUTH BEACH HOUSE 4

RESIDENCE TYPE BH4

FLOOR 2

2 BEDROOMS

2 BATHROOMS

2 HALF BATHROOMS

INTERIOR

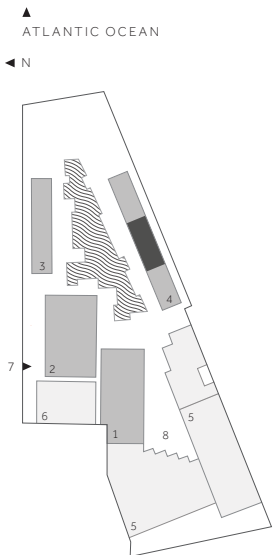
1,626 SQ FT 151 SQ M

EXTERIOR

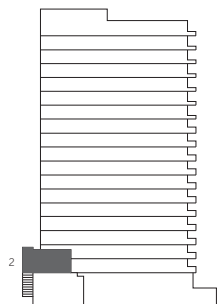
1,835 SQ FT 170 SQ M

TOTAL

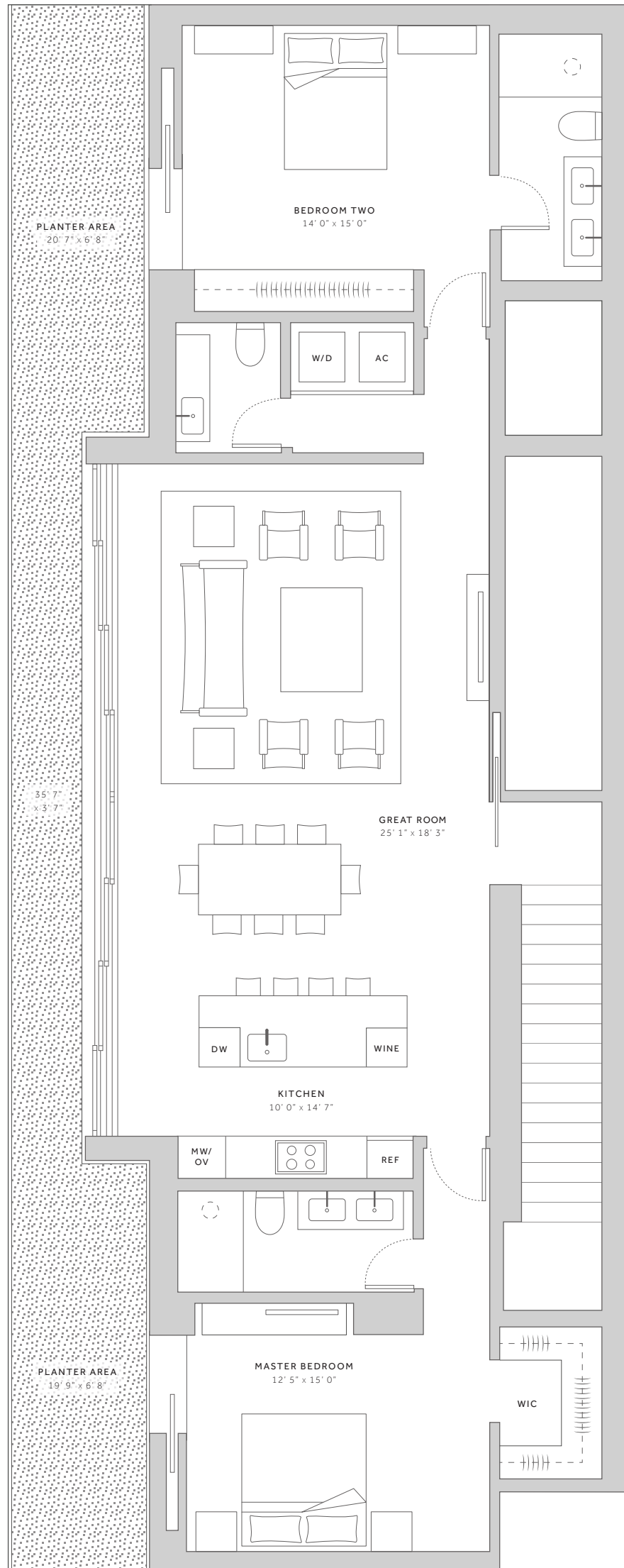
3,461 SQ FT 321 SQ M



- 1 - CENTRAL TOWER
- 2 - NORTH TOWER
- 3 - NORTH BEACH HOUSES
- 4 - SOUTH BEACH HOUSES
- 5 - HOTEL
- 6 - AMENITIES
- 7 - RESIDENTIAL LOBBY
- 8 - ENZO ENEA GARDEN



POOL VIEWS



ORAL REPRESENTATIONS CANNOT BE RELIED UPON AS CORRECTLY STATING THE REPRESENTATIONS OF THE DEVELOPER. FOR CORRECT REPRESENTATIONS, MAKE REFERENCE TO THE DOCUMENTS REQUIRED BY SECTION 718.503, FLORIDA STATUTES, TO BE FURNISHED BY A DEVELOPER TO A BUYER OR LESSEE.

This is not intended to be an offer to sell, or solicitation to buy, condominium units to residents of any jurisdiction where prohibited by law, and your eligibility for purchase will depend upon your state of residency. This offering is made only by the prospectus for the condominium and no statement should be relied upon if not made in the prospectus. Depicted is an artist's rendering which is subject to change. All plans, features and specifications are subject to change without notice. All depictions of matters of detail shown hereon, including, without limitation, items of finish, furniture and decoration, are conceptual only and are not necessarily included in the Unit. For a correct representation of the items included in the Unit, see the Purchase Agreement. Stated dimensions shown hereon are approximate and are measured to the exterior face of exterior walls and to the center line of demising walls. This method of measurement varies from, and is larger than, the dimensions that would be determined by using the description and definition of the "Unit" set forth in the Declaration (which generally only includes the interior airspace between the perimeter walls and excludes interior structural components). Note that measurements of rooms set forth on this floor plan are generally taken at the greatest points of each given room (as if the room were a perfect rectangle), without regard for any cutouts. Accordingly, the area of the actual room will typically be smaller than the product obtained by multiplying the stated length times width. All dimensions are approximate and may vary with actual construction.



SHORE CLUB

MIAMI BEACH

SOUTH BEACH HOUSE 5 RESIDENCE TYPE BH5

FLOOR 1

2 BEDROOMS

2 BATHROOMS

3 HALF BATHROOMS

INTERIOR

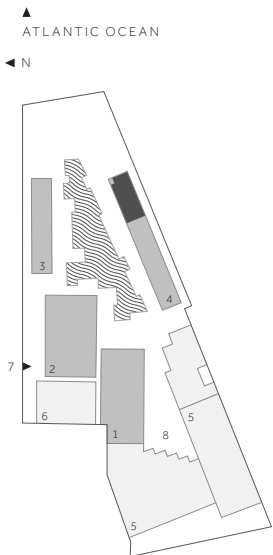
1,679 SQ FT 156 SQ M

EXTERIOR

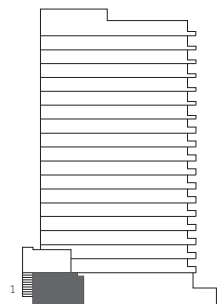
2,948 SQ FT 274 SQ M

TOTAL

4,627 SQ FT 430 SQ M

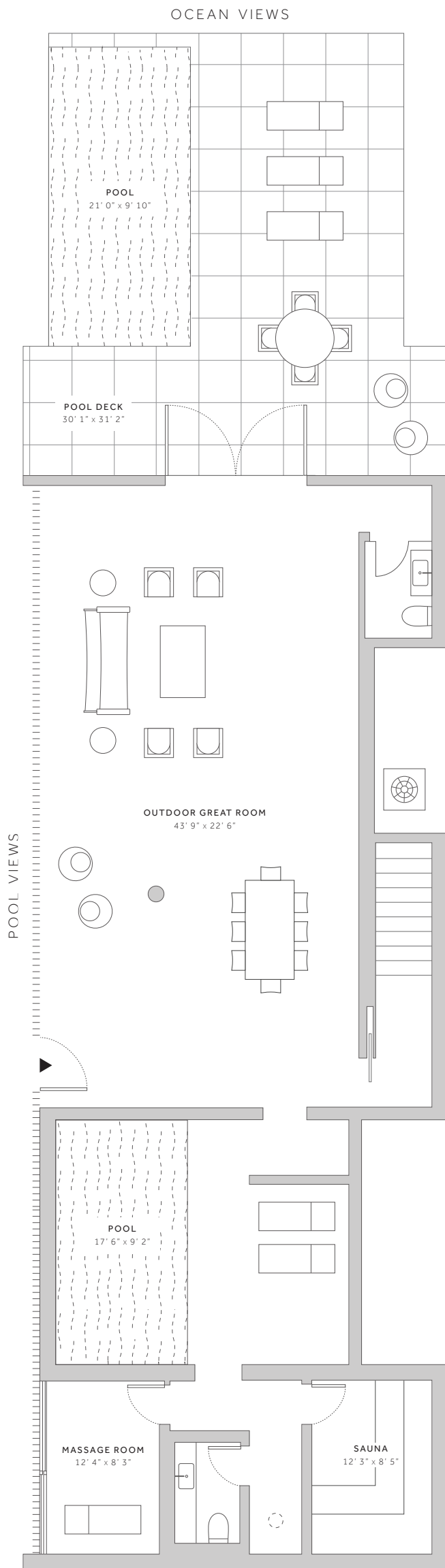


- 1 - CENTRAL TOWER
- 2 - NORTH TOWER
- 3 - NORTH BEACH HOUSES
- 4 - SOUTH BEACH HOUSES
- 5 - HOTEL
- 6 - AMENITIES
- 7 - RESIDENTIAL LOBBY
- 8 - ENZO ENEA GARDEN



1901 COLLINS AVENUE

MIAMI BEACH FLORIDA 33139



ORAL REPRESENTATIONS CANNOT BE RELIED UPON AS CORRECTLY STATING THE REPRESENTATIONS OF THE DEVELOPER. FOR CORRECT REPRESENTATIONS, MAKE REFERENCE TO THE DOCUMENTS REQUIRED BY SECTION 718.503, FLORIDA STATUTES, TO BE FURNISHED BY A DEVELOPER TO A BUYER OR LESSEE.

This is not intended to be an offer to sell, or solicitation to buy, condominium units to residents of any jurisdiction where prohibited by law, and your eligibility for purchase will depend upon your state of residency. This offering is made only by the prospectus for the condominium and no statement should be relied upon if not made in the prospectus. Depicted is an artist's rendering which is subject to change. All plans, features and specifications are subject to change without notice. All depictions of matters of detail shown hereon, including, without limitation, items of finish, furniture and decoration, are conceptual only and are not necessarily included in the Unit. For a correct representation of the items included in the Unit, see the Purchase Agreement. Stated dimensions shown hereon are approximate and are measured to the exterior face of exterior walls and to the center line of demising walls. This method of measurement varies from, and is larger than, the dimensions that would be determined by using the description and definition of the "Unit" set forth in the Declaration (which generally only includes the interior airspace between the perimeter walls and excludes interior structural components). Note that measurements of rooms set forth on this floor plan are generally taken at the greatest points of each given room (as if the room were a perfect rectangle), without regard for any cutouts. Accordingly, the area of the actual room will typically be smaller than the product obtained by multiplying the stated length times width. All dimensions are approximate and may vary with actual construction.



SHORE CLUB

MIAMI BEACH

SOUTH BEACH HOUSE 5 RESIDENCE TYPE BH5

FLOOR 2

2 BEDROOMS

2 BATHROOMS

3 HALF BATHROOMS

INTERIOR

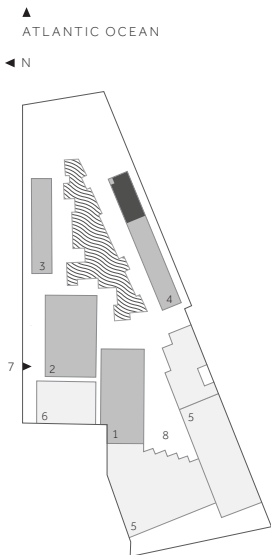
1,679 SQ FT 156 SQ M

EXTERIOR

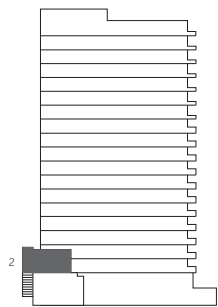
2,948 SQ FT 274 SQ M

TOTAL

4,627 SQ FT 430 SQ M

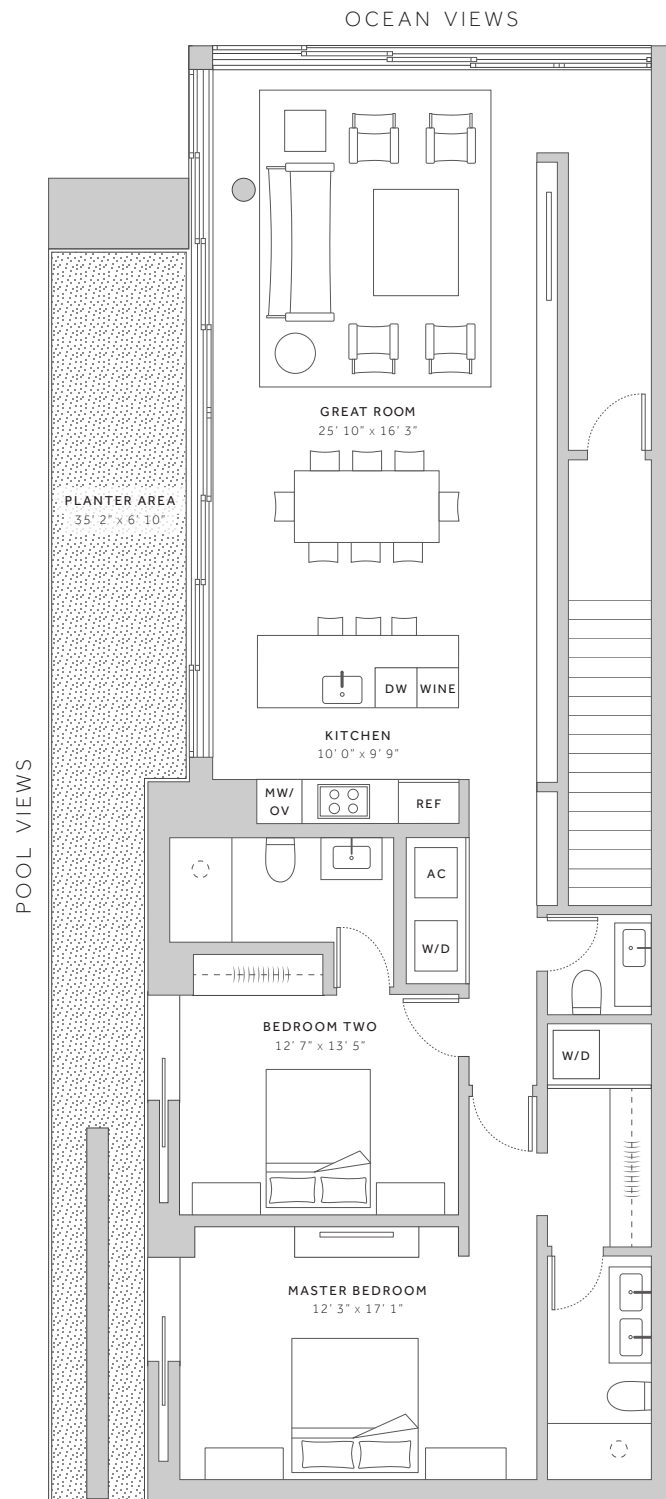


- 1 - CENTRAL TOWER
- 2 - NORTH TOWER
- 3 - NORTH BEACH HOUSES
- 4 - SOUTH BEACH HOUSES
- 5 - HOTEL
- 6 - AMENITIES
- 7 - RESIDENTIAL LOBBY
- 8 - ENZO ENEA GARDEN



1901 COLLINS AVENUE

MIAMI BEACH FLORIDA 33139



ORAL REPRESENTATIONS CANNOT BE RELIED UPON AS CORRECTLY STATING THE REPRESENTATIONS OF THE DEVELOPER. FOR CORRECT REPRESENTATIONS, MAKE REFERENCE TO THE DOCUMENTS REQUIRED BY SECTION 718.503, FLORIDA STATUTES, TO BE FURNISHED BY A DEVELOPER TO A BUYER OR LESSEE.

This is not intended to be an offer to sell, or solicitation to buy, condominium units to residents of any jurisdiction where prohibited by law, and your eligibility for purchase will depend upon your state of residency. This offering is made only by the prospectus for the condominium and no statement should be relied upon if not made in the prospectus. Depicted is an artist's rendering which is subject to change. All plans, features and specifications are subject to change without notice. All depictions of matters of detail shown hereon, including, without limitation, items of finish, furniture and decoration, are conceptual only and are not necessarily included in the Unit. For a correct representation of the items included in the Unit, see the Purchase Agreement. Stated dimensions shown hereon are approximate and are measured to the exterior face of exterior walls and to the center line of demising walls. This method of measurement varies from, and is larger than, the dimensions that would be determined by using the description and definition of the "Unit" set forth in the Declaration (which generally only includes the interior airspace between the perimeter walls and excludes interior structural components). Note that measurements of rooms set forth on this floor plan are generally taken at the greatest points of each given room (as if the room were a perfect rectangle), without regard for any cutouts. Accordingly, the area of the actual room will typically be smaller than the product obtained by multiplying the stated length times width. All dimensions are approximate and may vary with actual construction.

